

Hokkaido University (Hokkaido)



The objectives of this program are:

- (1) to improve students' Japanese language proficiency in order to enable them to interact with Japanese speakers and to conduct research in Japanese;
- (2) to acquire basic knowledge and methodology for Japanese studies – especially relating to Japanese general and applied linguistics;
- (3) to gain a deeper understanding of Japanese language and culture. In the second semester (April – September), students are required to study a research topic in their field of specialty and to complete a final report under the guidance of their supervisor.

◇ University Overview

Hokkaido University began as Sapporo Agricultural College, which was founded in 1876 as the first educational institution for agricultural studies in Japan.

The College was also the first institution in Japan to grant Bachelor degrees.

On its establishment the College invited Dr. William S. Clark, then president of Massachusetts Agricultural College in the United States, to be its Vice President. From its inception the College offered an education stressing cultural richness as well as advanced knowledge and skills. The frontier spirit of the time, echoed in Dr. Clark's farewell words "Boys, be ambitious", has been inherited as the spirit of foundation of the University throughout its over 130 years' history.

In 1949 Hokkaido University was redesignated as a "new-system" university with seven faculties and one department of general education, and it has since developed into one of the most distinguished universities in Japan.

The University currently consists of 12 faculties, 18 graduate schools, and 26 research institutes and centers, and has 2,038 academic staff, 11,845 undergraduate and 6,387 graduate students.

Number of Overseas Students (May 1,2009):

Total : 990 (from 86 countries)

Japanese Language and Culture Studies Students: 15 (2009–2010)

◇ Outline of courses

○ **Number of students accepted:** Total 20

○ **Period of program:**

October 1, 2010 – September 30, 2011 (including winter and spring breaks and summer vacation)

No classes will be held on Saturdays, Sundays, or national holidays.

○ **Outline of courses:**

The program consists of three types of courses: courses in Japanese language; courses in Japanese linguistics, culture and society; and directed study in students' fields of specialty including a final report. Japanese language courses and directed study are compulsory, and courses in Japanese linguistics, culture and society are elective. Students take eight to twelve class hours of compulsory Japanese courses per week and additional elective courses in their own areas of interest. Directed study is offered only in the second semester. The number of class hours varies according to the level of the student and the semester.

(1) Names, types and class hours of courses

a. Compulsory courses

Type	Course name	Hours (1st semester)	Hours (2nd semester)
Compulsory	Directed Study		30
Language	A	Intermediate Grammar	30
		Advanced Grammar	30
	B	Intermediate Kanji and Vocabulary	60
		Advanced Kanji and Vocabulary	30
	C	Intermediate Reading	30
		Advanced Reading	30
	D	Intermediate Writing	30
		Advanced Writing	30
	E	Intermediate Oral Communication	60
		Advanced Oral Communication	60

b. Elective courses

Type	Course name	Hours (1st semester)	Hours (2nd semester)
Elective	Japanese Linguistics	30	
	Japanese Sound System	30	
	Japanese Grammar	30	
	Japanese Lexicology		30
	Japanese Writing System		30
	History of Japanese		30
	Studies in Japanese Language	Not offered every semester	
	Comparative Culture	30	
	Japanese History & Geography		30
	Japanese Politics & Economy		30
	Japanese Literature & Arts		30
Japanese Society & Culture		30	
Studies in Japanese Culture	Not offered every semester		
Special Lectures	Up to 60 hours		

Notes:

1. First semester is from October to March and second semester from April to September.
2. The compulsory course, Directed Study, must be taken by all students.
3. All students must take at least 300 hours of Japanese language courses during the year. In first semester, students must take one course from each of the groups A–E.
4. Students must take at least 540 hours of courses in total throughout the year.
5. Students may take approved subjects offered in the general education program or in the faculties at Hokkaido University in place of some elective courses.
6. The Director of the International Student Center may also give permission to students to take additional appropriate subjects in the general education program, in the faculties, or arts and science courses in English at Hokkaido University.

7. Courses taken under (6) will be counted as Special Lectures in elective courses up to a maximum of 60 hours.
 8. Courses under (5) or (6) will be taken with the permission of the head of the general education program or the dean of the faculty concerned.

(2) Contents of courses :

a. Compulsory : Directed Study

This course is offered only in the second semester. Students acquire the basic concepts, techniques and methodology for research in their field, and complete a final report under the guidance of their supervisor. Reports are collected in a printed booklet.

b. Language :

1) Intermediate / Advanced Grammar

Review of basic grammar and acquisition of further grammatical patterns and expressions through study and practical exercises.

2) Intermediate / Advanced Kanji and Vocabulary

Acquisition of kanji and control of meaning and use of vocabulary through reading and other practical exercises.

3) Intermediate / Advanced Reading

Acquisition of skills and techniques in reading authentic Japanese texts in various genres.

4) Intermediate / Advanced Writing

Study and practice in writing various types and styles of Japanese, from everyday letters and e-mails to academic reports.

5) Intermediate / Advanced Oral Communication

Practice and development of oral communication skills required in everyday and academic situations.

c. Electives:

Various elective courses will be offered according to students' interests in order to provide basic knowledge of Japanese linguistics and background knowledge of Japanese culture and society as well to enable students to acquire basic skills for Japanese studies through studying research methodology and techniques. In Japanese linguistics, courses on the sound system, writing system, lexicology, grammar and the history of Japanese will be offered. Courses on Japanese culture range over history and geography, politics and economy, literature and arts, society and culture, and comparative culture.

(3) Organization of courses and classes

a. Courses:

The courses comprise units offered throughout the year by the International Student Center at Hokkaido University.

b. Classes:

Only language courses are divided into intermediate and advanced levels. Placement will be decided by the placement test held after enrollment.

○Teaching and guidance:

(1) Teaching staff of International Student Center

Name	Title	Field Speciality
YAMASITA, Yoshitaka	Professor	Japanese Linguistics. Spanish Linguistics
YANAGIMACHI, Tomoharu	Professor	Japanese Language Teaching. Second Language Learning
NAKAMURA, Shigeo	Associate Professor	Japanese Language Teaching. Semantics
KOBAYASHI, Yoshiko	Associate Professor	Japanese Language Teaching. Learning Science
OGAWARA, Yoshiro	Associate Professor	Japanese Language Teaching.
JUNG Hyeseon	Associate Professor	Japanese Linguistics. Social Linguistics

(2) Personal guidance

a. Academic advice:

In the first semester, the course coordinator advises students on academic issues as the need arises. In the second semester, supervisors advise individual students in the Directed Study course each week.

b. General advice:

Two overseas student advisors in the International Student Center advise students as the need arises throughout the year.

○ Conditions for completion of the course:

A certificate of completion of the program will be given to students who satisfactorily complete 540 hours or more of courses throughout the year.

○ Qualifications of applicants:

Applicants must meet the following conditions:

a. Status and field of specialty:

Applicants must be regular students in an undergraduate program at an overseas university. Applicants must be studying Japanese language or Japanese culture as their academic major. (First-year students are not eligible to apply.)

b. Competence in Japanese language

Applicants must have passed level 3 (or higher) of the Japanese Language Proficiency Test or have equivalent or higher proficiency in the language at the time of application. Applications from applicants with only introductory level proficiency will not be accepted. Any students adjudged as introductory-level after arrival will not be eligible to complete the course.

c. Academic record:

Applicants must possess a good academic record at university level.

○Exchange of credits:

In principle, official units are not credited but a list of completed courses and grades will be given to each student. If a student's home university needs information on courses and grades, the International Student Center will provide an official certificate.

◇Accommodation

Keiteki-ryo (for single men)
Sosei-ryo (for single women)
International House (for single men/women, married couples and families)

◇Contact

Address :

Hokkaido University
 Kita 8, Nishi 8, Kita-ku, Sapporo 060-0808 JAPAN

Contact :

Division for International Exchange and Education

TEL :

+81-11-706-2109

FAX :

+81-11-706-4874

E-MAIL :

ryugaku@academic.hokudai.ac.jp

Homepage :

http://www.hokudai.ac.jp/

Coordinator :

KOBAYASHI Yoshiko

Hokkaido University of Education (Hokkaido)



The Hokkaido University of Education has had close ties with many local elementary, junior high, and high schools. The course provides international students with several opportunities a year to visit these schools and communicate with people in Japanese as well as to become familiar with the Japanese educational system.

◇ Overview of the University

(1) Overview

The Faculty of Education, the sole faculty at the Hokkaido University of Education, has five campuses (Sapporo, Hakodate, Asahikawa, Kushiro and Iwamizawa Campuses) and covers all areas of education.

- Course for Teachers Training (Sapporo, Asahikawa, Kushiro)
 - Each Campus offers its unique program to afford students opportunities to learn practical teaching skills they will need in their teaching fields.
- Course for Humanities and Regional Sciences (Hakodate)
 - The goal of the course at Hakodate Campus is to train students to contribute to local communities by promoting progressive and cross-disciplinary research on Humanities and Regional Sciences.
- Course for Fine Arts and Music; Course for Sport Education (Iwamizawa)
 - The goal of the two courses at Iwamizawa Campus is to train students to design, plan, and enrich the cultural life.

The Graduate School of Education offers the following programs;

- a) M.Ed. level: School Education/Subjects Education/School Health Nursing/Clinical Psychology and School Education
- b) Professional Degree level: Advanced Teacher Professional Development Programs

(2) Current enrollment (as of October 1, 2009)

- Undergraduate: 5,320 (Sapporo: 1,138 Hakodate: 1,386 Asahikawa: 1,188 Kushiro: 807 Iwamizawa: 801)
- Postgraduate: 372
- Special Course for Nurse Teachers: 27
- Research Students/Selective Course Students/Special Audit Students: 104

(3) International relations (as of October 1, 2009)

77 Students from 16 countries.
30 Exchange partner universities in 13 countries

(4) Number of Japanese Studies Students

6 (in the past 5 years)

◇ Course Outline

○Number of students accepted: about 5

○Period of the Course:

Sapporo Campus: October 2010 to August 2011

○Classes:

I) Japanese Language and Culture

Aims to develop the student's practical skills of the Japanese language. The students learn well-balanced language skills for academic research at the University, especially communication skills for discussion on social-cultural topics. Students also deepen their knowledge of the Japanese culture and develop the cross-cultural understanding through discussion and presentation of their own cultures.

II) Academic Japanese Language

Aims to improve the student's listening skill and academic writing skill for study and research at the University.

III) Japanese Culture and Society

Studying Japanese culture and society with real experiences.

IV) Seminar

Studying academic writing and presentation skills.

V) Foreign student meeting

Exchanging necessary information for foreign student.

VI) Japan Studies

Students take some subjects about Japanese language, Japanese history, Japanese culture, Japanese society and Ainu culture from classes for Japanese students.

VII) Final Essay

Students conduct research in their area of study through such as interview, questionnaire and field trip. Each student submits a final essay on this research.

○Faculty:

Staff: Instructors and advisors

Harumi SASATANI, Professor of Sociology,
Director of the Sapporo International Center

Kyoko OGA, Associate Professor of Japanese, International Center

Jiro ABE, Associate Professor of Japanese, International Center

Includes other professors who can teach classes or advise international students in their field of study.

○Events:

- Short home stay
- Internship
- International students gathering, Student club activities
- Home stay association events
- Visits to local schools
- Field trip around Sapporo

○Certificate of Completion:

The Hokkaido University of Education issues a Certificate of Completion to students once they finish their courses of study (including the required subjects –Japanese language, Japan studies, Japanese culture, Final project).

○Minimum requirements for applicants:

Applicants must be an undergraduate at a foreign (non-Japanese) university majoring in fields related to the Japanese language or Japanese culture. In addition, applicants are expected to have studied Japanese at the elementary level or higher. (Acquisition of 3rd level of the Japanese Language Proficiency Test, or approximately 300 hours of Japanese language study experience is desirable.)

○Credits:

An official academic transcript will be provided to students who successfully completed their studies and need transfer credits.



◇ Accommodation

Students may request a room in a university dormitory, however, the dormitories are to be under repair in 2010; therefore you may likely stay in a private apartment off-campus.

The dormitories are as follows:

- The price of housing does not include electricity, gas, water, and board.
- Students are supposed to live with Japanese students.

Campus	Gender	Room capacity	Housing fee /month (yen)	Address
Sapporo	M	1	4,300	Kita-ku, Sapporo (on-campus)
	F	1	4,300	Chuo-ku, Sapporo (off-campus)

[Facilities] [Arround dormitories] [Commuting time] *depending on each dormitory

- Common use: kitchen, shower, toilet, refrigerator, and etc
- Personal use: desk, wardrobe, and etc
- Internet access is available.
- There are grocery stores and convenience stores, and etc near the dormitories.
- Male students' dormitory: within the walking range
- Female students' dormitory: about one hour by bus and subway

◇ Contact

International Section
 Hokkaido University of Education
 5-3-1, Ainosato, Kita-ku, Sapporo 002-8501 Japan
 Phone: +81-(0)11-778-0266/0673/0674/0949
 Fax: +81-(0)11-778-0675
 e-mail: ryugaku@sap.hokkyodai.ac.jp ; kokusaik@sap.hokkyodai.ac.jp
 Web: <http://www.hokkyodai.ac.jp/>

Hirosaki University (Aomori)



Stay in Hirosaki to obtain solid foundation of various Japan related fields and Enjoy experiences of traditional culture and community in a northern Japanese castle town

Introducing Hirosaki University

Characteristics and History

Hirosaki University is the only National University in Aomori Prefecture. It is now comprised of 5 faculties, 7 graduate schools, and 12 common educational institutions.

Because of its origin, it has produced many teachers, doctors, and local government officers in Aomori and neighboring prefectures.

Faculties: Humanities, Education, Medicine, Science and Technology, Agriculture and Life Science.

Master Courses: Humanities, Education, Agriculture and Life Science, Health Sciences (Master's Course·Doctoral Course)

Ph.D. Courses: Medicine, Science and Technology, United Graduate School of Agriculture and Science, Regional Studies

Statistics (as of 1 May 2009)

Teaching Staff: 678 Undergraduates: 6058

Graduate students: 713 (total: 6771)

International Exchange

International Students: 136
(from 20 countries and regions)

Number of Japanese Studies Students in past years (including students recommended by the University)

2009: 1 student / 2008: 0 student / 2007: 0 student

2006: 2 students / 2005: 1 student / 2004: 7 students

Introducing Hirosaki City and Aomori Prefecture

Hirosaki City, in which Hirosaki University is located, has a historic castle at its center, and plays a major part in the education and culture of the region. It presently has a population of 180,000. Its cherry blossoms in spring and the "Neputa" Festival in summer charm many people and are famous nationwide. Surrounded by rice fields and apple orchards and blessed by stunning views of Mt. Iwaki to its west and Mt. Hakkoda to its east, the city is also situated very close to Lake Towada. Visitors can enjoy the beauty of nature in every season. The many skiing slopes and hot springs in the area form another major attraction. Rich in natural beauty and cultural tradition, the area offers students relatively cheap living conditions. The city is compact, and apartments, eating houses and pubs suited to student's needs surround the university. The city's center is only 15~30 minutes walk away. Bicycles are students' primary means of transportation.

There are direct flights between Aomori Airport (55 minutes by bus from the city) and Haneda (Tokyo), Nagoya, Kansai and Itami (Osaka) Airports. There are also international flights connecting to Seoul-Incheon (Korea) and Khabarovsk (Russia).

Course characteristics

Students in this course are able to enroll in various subjects both for Japanese students and international students, and to receive supervision from the professors of fields in interests.

Number of students to be accepted:

University recommendation = 2

Embassy recommendation = 2

Duration of the program

From 1 October 2010 to 30 September 2011
(365 days)

1. This course is suited to students who wish to broaden knowledge and to develop one's foundation

Students can take many subjects among not only Japan related subjects for international students but subjects for Japanese students freely. It makes easy to build foundations of the fields in interests.

Participants may simultaneously take courses from the short-term program which is geared to students who want to acquire a wide, rather than deep knowledge of Japanese language and culture.

Students are able to enjoy traditional culture of Hirosaki, a famous castle town.

2. As the students joined in the course belong to Faculty of Humanities or Faculty of Education, those who have high Japanese language proficiency can attend the seminars and use the laboratories like the Japanese students. It is possible to take part in events organized by seminars, such as trips.

In the faculties, fields such as Japanese and comparative literature, Japanese linguistics, language pedagogy, Japanese art, Japanese folklore, Japanese economics, and archeology are offered.

3. Numerous chances to interact with people of the Region.

Students from all courses participate in international events such as lectures, study sessions about Hirosaki and parties held with citizens, by Hirosaki City.

4. Various field trips and hands-on experience

In the International Exchange Course Program, a variety of classes is offered for the international students from our 23 affiliated schools in 12 countries and for Japanese students. Many of these classes feature field trips and hands-on experience. By attending these classes, students can share various experiences with other international students and Japanese students.

Conditions for eligibility

Students should be recommended by the Japanese Embassy in their country as students in our Japanese Studies Program and should meet the following requirements:

- Adequate language proficiency in order to carry out investigations and conduct research.
- Adequate language proficiency in order to read academic papers.

Please note:

Students planning to study specific areas concerning Japan are required to define their field of study as clearly as possible. For example: Japanese Literature (Ancient Age, Middle Age, Modern Age, Present Day), Japanese Linguistics (Ancient Age, Middle Age, Modern Age, Present Day), Japanese History (Ancient Age, Middle Age, Modern Age), Archeology, History of Art, Japanese Management, Japanese Folklore, etc. Japanese language, Japanese culture, and Nihon jijo are not considered course names, so without further specification, a student may be assigned to an academic advisor outside his preferred field.

Teaching Staff

• Teaching staff responsible for Japanese language courses:

Nobuko Oyama, Associate Professor, International Student Exchange Center, specializing in Japanese language pedagogy

E-mail address: nobuko@cc.hirosaki-u.ac.jp

Akira Kashima, Associate Professor, International Student Exchange Center, specializing in Applied Linguistics.

E-mail address: akashima@cc.hirosaki-u.ac.jp

• Academic Advisors, Individual Instructors:

Academic advisors and teachers responsible for Japanese language courses in the International Exchange Center are in charge of providing guidance regarding study and all teachers in the center are in charge of providing advice regarding life in Japan.

Jun Onishi, Professor, International Student Exchange Center, specializing in Economics

Junichiro Suwa, Associate professor, International Student Exchange Center, specializing in Anthropology

Hannah Sawada, Associate professor, International Student Exchange Center, specializing in Comparative culture



International students and International Exchange Center staff with the president at the front gate of the university

Japanese Language courses

Name of course	Number of classes per week	Number of classes per semester	Semester when the course is offered	
			Spring	Autumn
Upper Intermediate A	Twice a week	30 times	○	○
Upper Intermediate B	Twice a week	30 times	○	○
Upper Intermediate C	Once a week	15 times	○	○
Upper Intermediate D	Once a week	30 times	○	○
Advanced A	Once a week	15 times	○	○
Advanced B	Once a week	15 times	○	×
Advanced C	Once a week	15 times	×	○

*One class is 90 minutes : 15 classes will be give 2 credits

- Students take Japanese language courses suitable for their level of Japanese as determined by the result of a placement test taken upon arrival.
- Students can take classes in faculties and in first and second year courses (common to Japanese students) while getting advice from an academic advisor or from an instructor of the International Exchange Center.
- Students are required to register for and attend at least 7 classes per week.

International Exchange Courses: 2009-2010

(Spring semester) Japanese Culture Viewed through Rice, Structures of Japanese Society, Short form Poetry: Theory and Workshop, Anthropology of Music, Traditional Japanese Sports, Regional Art, Regional Tourism (Internship), Principles of Management and Contemporary Issues of Japanese Management, Organizational Behavior and Japanese Human Resource Management(1), Export Business Management Marketing, Common Social Capital and Commons, Introduction to Modern Astrophysics in Japan, Introduction to Materials Engineering

(Autumn semester) Cultural Dimensions of Globalism, Topics in Japanese Society, Regional Tourism (Internship), Principles of Management and Contemporary Issues of Japanese Management, Organizational Behavior and Japanese Human Resource Management (2), Modern Japanese Literature, Rituals, Performance and Beliefs, Survey of the Modern Cultural History of Tsugaru, Northeast Asia, Japanese Education:Historical Development and Current Issues, History of Physics in Japan, Introduction to Applied Linguistics

Certificate of Completion; Cross-Crediting

- Students who successfully acquire 20 credits during their year of study are awarded a Certificate of Completion.
- Students who enroll in courses and pass their examinations are granted credits.

Field trips and other events

- Oct. Fall term orientation and welcome party
- Nov. International Festa (University Festival)
- Jan. Kikyono Community rice cake-making party
- Feb. International student graduation and completion celebration
- Mar. Graduation ceremony
- Apr. Entrance ceremony, spring term orientation, welcome party
- Jul. Camp attended by students from the 3 Universities in Northern Tohoku (2 nights)
- Aug. Participation in the Neputa festival and Kikyono community bon dance
- Sept. Tour (1 night)

- Classes containing several field trips are offered in International Exchange Courses.
- Home visiting. Students are introduced to families in Hirosaki City, and they can take contact each other when it is convenient for both.
- The Tandem System. Students, teachers and administrative staff learn from each other what they are interested in.



The building in which the international Exchange Center is located, viewed from the northwest



An international student painting neputa-e in a class entitled "Regional art"

Housing

There are no specific quarters for national scholarship students. The International Student Exchange Center will help the students find apartments (¥15,000–¥35,000 per month) or place them in dormitories with Japanese students (one shared room for 2 students: ¥20,000 per month, including 2 meals a day).

For further information, contact:

International Student Section
 International Student Exchange Center
 Hirosaki University
 Bunkyo-cho 1
 036-8560 Hirosaki
 Aomori Prefecture Japan
 Tel.: +81-172-39-3109
 Fax: +81-172-39-3133
 E-mail: ryugaku@cc.hirosaki-u.ac.jp
 Hirosaki University Home Page Address:
<http://www.hirosaki-u.ac.jp>
 Academic Members Reference:
<http://www.hirosaki-u.ac.jp/english/acmem.html>

Iwate University (Iwate)



We provide intellectual discoveries integrating knowledge, experience and analysis..

◇ Profile of Iwate University

(1) Profile of Iwate University

Iwate University was founded in 1949 with faculties of Liberal Arts, Engineering, and Agriculture under the new educational system of Japan. Since then it has continued to grow. At present, we have 4 undergraduate programs (The Faculty of Humanities and Social Sciences, Education, Engineering and Agriculture), a master's program in each Faculty and a doctoral program in the Faculty of Engineering and the United Graduate School of Agricultural Sciences. In addition, we have many interdisciplinary departments and affiliated institutions to support our academic activities. Among these departments and institutions is Center for Regional Collaboration in Research and Education, University Education Center, Center for Information and Media, and International Center.

The Field Science Center, Veterinary Teaching Hospital and Cryobiosystem Research Center are affiliated to the Faculty of Agriculture.

The enrollment at Iwate University is approximately 6,300 students, with 800 faculty and staff to support them. All four faculties are located in the center of Morioka, on the same campus, so it is easy to visit all of them.

Iwate University is proud of its collection of about 500,000 items of valuable relics and materials provided by the hard work of its past and present faculty members. Among the facilities that contain these treasures is the University Botanical Garden, the Nature Observation Park, center for agricultural education, and center for veterinary study. These facilities are collectively called the 'Iwate University Museum' and have been open to the public since July 2001.

(2) History of International Exchange

International exchange is becoming more and more active at Iwate University as visiting scholars and students from overseas are increasing. Iwate University has exchange agreements with about 46 overseas institutions as of October 1, 2009.

The university has been accepting international students on the JLC Program since 2001 and is planning to increase the number.

International Students

	2006	2007	2008	2009
Number of Foreign Students enrolled	200	198	197	195
Number of Japanese Studies Students enrolled	1	1	1	0

(3) Other Information

Morioka City serves as the center of the North Tohoku Region with a population of 300,000. It has an abundance of nature, and it is known as a city of education and culture.

There are many people from Iwate who have played important roles in the areas of academism, culture and politics. Among them include the philosopher MIYAZAWA Kenji, the poet ISHIKAWA Takuboku, and the author and international administrator NITOBÉ Inazo. Additionally, four former Prime Ministers were from Iwate. Hiraizumi, which is located in southern Iwate, was the center of prosperity of the Fujiwara Family, and there is currently a campaign to have it registered on the UNESCO World Heritage List. In the center of the prefecture is Tohno, which is well-known for folklore and folk tales. A famous folklorist, YANAGIDA Kunio wrote "Tales of Tohno".

Iwate University is ideally located in the middle of Iwate. Experiencing Iwate's rich culture and history will help students enhance their understanding of the Japanese culture. We are always looking forward to seeing promising youth from around the world on our campus.

◇ Outline of courses

1. Title

Japanese Language & Japanese Culture Studies Program at Iwate University

2. Profile

The program focuses on Japanese language and affairs as a whole: culture, history, geography, politics, economics, society, education, etc.

In order to encourage students to understand “Japan”, students will engage in hands-on experiences outside the classroom such as a kimono workshop, Tea ceremony, Japanese calligraphy, etc. In addition, students are required to write an academic report focusing on the topic of their selection related to the Japanese culture.

3. Program Summary

(1) Maximum enrollment 5

(2) Period October, 2010 – September, 2011

(3) Outline

The course of study has two main components. In one, students take Japanese language and culture classes for international students. In the other, students take classes in their areas of study with Japanese undergraduates from the University. Students are assigned an adviser who will help them decide the number of classes to take. Usually, students can take any course that is available and meets their interests. Thus, they are able to focus on their specific area of interest.

Iwate University provides Japanese language courses from the beginning to the advanced level. In these classes, students have the unique opportunity to study Japanese with classmates from a variety of different countries. There are also courses taught in English.

(4) Teaching Staff

Advisers are assigned to individual students to help them in their respective fields of study. In addition, faculty members from the International Center assist students with their Japanese language study as well as academic and daily life.

The faculty members belonging to the International Center are:

Professor	Masamichi OKAZAKI
Associate Professor	Yoko MATSUOKA
Associate Professor	Chidori NAKAMURA
Associate Professor	Natsumi ONAKA
Associate Professor	Chizuko HAYAKAWA

(5) Excursions and Events

Students will visit famous spots in the area including museums and are encouraged to participate in events on and off campus in order to meet a variety of people in the community. International students are invited to participate in such annual events as Cherry-tree blossom viewing picnics (Japanese tradition), a bus tour, camping, summer festivals, Mochi pounding, skiing and a visit to a hot spring, Girl’s Doll Festival, Kimono workshop etc. by local community groups. These hands-on experiences serve as a great opportunity to understand Japanese culture. Students are also invited to local schools for cultural exchanges.

(6) Requirements for a Certificate of Completion

A Certificate of Completion will be issued to students who successfully complete the program. Students earn the credits if their academic scores meet the requirements. Students are required to make a final presentation and submit a report, which will be credited as “Independent Study”.



Kimono workshop

(7) Qualification for Enrollment

In order to apply for this program, students must meet the following requirements.

1) An intermediate or advanced level of Japanese proficiency, mastery of approximately 1,000 basic kanji and a vocabulary of 6,000 words, and the ability to carry on daily conversation and read simple passages in Japanese.

2) A major or minor of Japanese language, Japanese culture or a Japan related field at their home institution.

(8) Courses

Courses encompassing the study of the Japanese language and Japanese Affairs are listed on this page(one class length is 90 minutes).

(Students in the JLC Program are able to take interdisciplinary courses and supplementary courses.)



Ski tour

Introductory Major Courses taught in English	
Faculty of Humanities and Social Sciences	Discovering Japanese Culture and Japanese Psychology
	New York: The Gateway to US Culture and in the 20th Century
	Another Country: The USA in the 1930's and the Birth of Modernity
	Japanese Culture and Society Through Film
	State Terrorism: An American Dilemma
	Bringing it All Back Home: The Cultural Revolution in 1960's USA
	Ethnic Identity and L2 Learning
Faculty of Education	Special Education in Japan
	Cultural Domains
	School Internship Program
	The Geohistory of the Earth
	Sports in Japan
	Introduction to Psychology
	Psychology of Visual Perception
Faculty of Agriculture	Animal Physiology
	Adaptation of Life to Cold Environment
Faculty of Engineering	Introduction to Civil and Environmental Engineering

Japanese Language & Japanese Affairs Courses	
International Courses	Intermediate Japanese I General A/B
	Intermediate Japanese I Conversation
	Intermediate Japanese I Composition
	Intermediate Japanese I Reading
	Intermediate Japanese I Kanji
	Intermediate Japanese II General A
	Intermediate Japanese II Composition
	Intermediate Japanese II Reading & Kanji
	Intermediate Japanese II JSP for science A/B
	Intermediate Japanese II JSP for social science
Independent Studies	
Interdisciplinary Courses	Advanced Japanese A Advanced Japanese B Advanced Japanese C Advanced Japanese D Advanced Japanese E Advanced Japanese F Advanced Japanese G Advanced Japanese H
	Multicultural Communication A/B
	Japanese Culture & Society A/B
	Japanese and Japanese Language, Culture and Society

Historical Museum for Agricultural Education



◇ Resident Facilities

The International House is an on-campus housing facility for international students and has 30 single rooms, 3 rooms for couples, and 3 for researchers. International students can live in the International House for up to 1 year. In addition, international students are also eligible to live in a university dorm near campus, which has a capacity of 24 residents. http://iuic.iwate-u.ac.jp/kaikan/kaikan_j.html

For inquiries please contact ;
Masamichi OKAZAKI
Professor, International Center
okazaki@iwate-u.ac.jp

◇ Contact Address

International Office
Iwate University
3-18-34 Ueda, Morioka, Iwate 020-8550
TEL : +81-19-621-6076
FAX : +81-19-621-6290
Email : gryugaku@iwate-u.ac.jp
URL : <http://www.iwate-u.ac.jp>
<http://iuic.iwate-u.ac.jp/>

Tohoku University (Miyagi)



This program is aimed at students who have strong motivation and interest in independent research activities. In addition to a number of Japanese language courses, the program regularly offers classes in history of Japanese thoughts, Japanese literature, etc. Among the foci of the program is to train program students in academic skills in class presentation and report writing.

◇University's Overview

① University's Overview

Tohoku University was founded in 1907 as the third Imperial University in Japan. Tohoku University consists of 10 faculties for undergraduate, 16 graduate schools, 3 professional graduate schools and 5 research institutes. Based on "research-first" and "open-door" policies, we are committed to playing a vital role in international cooperative research and educational endeavors as a world-famous university.

(1)Department: Arts and Letters, Education, Law, Economics, Science, Medicine, Dentistry, Pharmacy, Engineering, Agriculture

(2)Number of students, etc.

Faculty members : 2,846
Undergraduate students : 10,967
Graduate students : 6,881

② International Exchange

International students : 1,346 (75 nationalities and areas)
International visitors & researchers : 1,590 (April, 2008–March, 2009)

③ Characteristics of the Region

Miyagi Prefecture belongs to Tohoku (northeastern) district in Japan. The eastern part of the prefecture faces the Pacific Ocean and the western part is a mountainous region. Between them lies the Sendai Plain. Fishery and agriculture are the chief industries in the prefecture.

Sendai city in which Tohoku University is located has a population of about 1,000,000. The city, once prospered as a castle town, plays an important role as the economic and cultural center of Tohoku district at present. Sendai has been called "City of Green" and widely known as one of the most beautiful and environmentally pleasant cities in Japan. It is about 1 hour and 40 minutes by Shinkansen (super express) from Tokyo.

◇ Program Overview

Title of the Program

Japanese language & Japanese culture studies program at Tohoku University

Characteristics of the Program

This program is aimed at students who have strong motivation and interest in independent research activities. The students can take classes of their choice from a large variety of Japanese language and culture courses offered at Tohoku University.

In addition to a number of Japanese language courses, the program regularly offers classes in history of Japanese thoughts, Japanese literature, etc. Among the foci of the program is to train program students in academic skills in class presentation and report writing.

Contents of the Program

① Number of Student to be accepted

10 students

② Period of the Program

October 1, 2010 – September 30, 2011

③ Classes

All courses meet 1.5 hours per week. Program students are required to take a Minimum of 6 classes per week in each semester

④ List of Japanese language and culture related classes for international students

Intermediate Japanese	G4 (Grammar)	Learning intermediate level Japanese grammar
Intermediate Japanese	L4 a (Listening Comprehension)	Practice listening to news on Japanese society
Intermediate Japanese	L4 b (Listening Comprehension)	Practice listening comprehension using CALL
Intermediate Japanese	S4 (Conversation)	Practice seminar-style conversation: reporting, presenting and discussion
Intermediate Japanese	R4 (Reading Comprehension)	Learning the skills in reading academic papers and articles in Japanese
Intermediate Japanese	W4 (Composition)	Learning the skills in writing academic papers and articles in Japanese
Intermediate Japanese	P4 (Practice)	Practice communication with Japanese students

Intermediate Japanese	K4 (Kanji)	Learning college-level Kanji
Japanese Culture	JS4	<u>Japanese Songs</u> Learning Japanese language and culture through songs
Japanese Culture	JR4	<u>Japanese Studies Seminar</u> Reading and discussing in Japanese culture and society
Japanese Culture	BC4	<u>Business Communication</u> Learning expressions and manners in Japanese business
Japanese Culture	EB4	<u>Japanese in Economics and Management</u> Learning Japanese used in Economics and Management
Advanced Japanese	G5 (Grammar)	Learning advanced-level Japanese grammar
Advanced Japanese	R5 (Reading)	Learning academic expressions through reading books about the Japanese society and culture
Advanced Japanese	P5 (Practice)	Learning the integrative Japanese skills for academic purposes
Advanced Japanese	K5 (Kanji)	Learning Kanji characters necessary for the college-level study
Japanese Culture	JF6	<u>Japanese Language in Films and TV Programs</u> Learning the Japanese language and cultures through films and TV programs
Japanese Culture	MC6	<u>Multi-cultural Communication</u> Providing an opportunity to consider the Japanese society together with Japanese students
Japanese Culture	PH6	<u>Japanese History of Thoughts 1</u> Learning the Japanese history up to the Edo-period
Japanese Culture	MH6	<u>Japanese History of Thoughts 2</u> Learning the Japanese history after the Meiji-period
Japanese Culture	EJ6	<u>Reading Essays on Japanese Culture</u> Reading famous articles on the Japanese culture and discussing them in class
Japanese Culture	JR6	<u>Japanese Studies Seminar</u> Reading and discussing in Japanese language and culture
Japanese Culture	ML6	<u>Japanese Modern Literature</u> Reading the Modern Japanese literature selectively and discussing them in class

- ※ The program also offers Workshops on Japanese Culture (Flower arrangement, Japanese sweets cooking, Tea ceremony, Japanese drums, etc.)
- ※ Besides these classes for international students, the program students may, with the permission of the instructor, take or audit undergraduate classes in other departments (e.g. Faculty of Arts and Letters), such as below:

Language and Mind
Mechanism of Sentence and Discourse
Sound and Communication
Gender in Japanese Language
Writing System in the World
Films and Literature in Asian Countries
Japan in Edo Era
History of Western Painting in Japan
Trials in Japan



Introduction to Japanese Language Teaching
Introduction to Japanese Literature
Introduction to Japanese History of Thoughts
Lecture on Human Relations
Lecture on International Relations
Japanese Economy
Principles of Business Administration

- ※ Classes are liable to change due to curriculum reorganization.

⑤ Support System

Academic advisors:

SUKEGAWA, Yasuhiko (Professor in Japanese phonetics)
SATO, Sekiko (Professor in Japanese history of thoughts, Japanese education)
UEHARA, Satoshi (Professor in Japanese language and linguistics)
TAKAHASHI, Akinori (Associate Professor in Japanese history of thoughts,
Cultural history),

and 20 others

Administrative officer:

NAKAO, Yukari (Director of Student Exchange Division)

- ※ An academic advisor will be assigned to each student.

⑥ Events

Orientation, Opening Ceremony, International hours, International festival, Closing Ceremony, etc.

⑦ Certification

A certificate of completion will be given to students who have completed the program.

⑧ Credit Transfer

Decisions regarding the transfer of credits will be made according to the criteria of the student's home university after his/her return. The program will issue a certificate listing the courses completed, number of classroom hours, final grade, and standard for evaluation upon the student's request through his/her home institution.

⑨ Qualification and Requirements for Applicants

Applicants must satisfy the following conditions.

- 1) Applicants are expected to have passed level 2 (or higher) of the Japanese Language Proficiency Test provided by Japan Foundation or have equal or higher proficiency.
- 2) Applicants must be studying Japanese language or Japanese culture as their academic major at their home country university.

◇ Accommodation

Tohoku University International House : Single 147, Couple 42, Family 31
Tohoku University University House Sanjo: Single 256
Sendai International House I : Single 50, Couple 7
Sendai International House II : Main Building – Single 54
Annex Building – Single 18,
Couple 7

◇ Contact Person

Name : SUKEGAWA, Yasuhiko Position : Professor
Address : 41 Kawauchi, Aoba-ku, Sendai, 980-8576 JAPAN
Phone : +81-22-795-7966
Fax : +81-22-795-7826
E-mail : y_sukegawa@insc.tohoku.ac.jp
Tohoku University Homepage Address: <http://www.tohoku.ac.jp>



BBQ party with Japanese students



Workshop making Tanabata ornaments

Miyagi University of Education (Miyagi)



You study Japanese in the district and Schools

◇Introduction to the university

①General Guidance of the university

(1) Characteristics and History

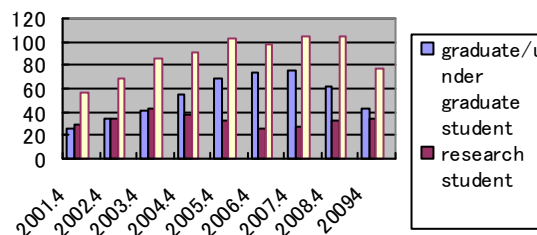
Miyagi University of Education is a teachers' college in Sendai City of the Tohoku district. It was founded in 1965. The total scale this university is about 1,800 students including undergraduate and graduate school (master's courses). We have specialists in all fields. A homely atmosphere and excellent instruction system are special features of our university. Sendai has a lot of greenery, and the cost of living is comparatively low. Cultural facilities are also abundant. Almost 80 foreign students are studying here now. After graduation, they play an active role in all areas especially in the field of education. Furthumore our university is famous for promoting UNESCO School network and Education for Sustainable Development

(2)Total number of teachers and students

Professors	Associate Professors	Lecturers	Research Associate
77	38	3	2
Teachers	School Nurses	Nutritional Health	Officials
89	4	2	78
Undergraduate Students			1,573
Graduate Students			130

②International Exchange

(1)Total number of foreign students



(2)Overseas Affiliated Universities

Country and area	Name of exchange school
United States	Florida state University
Britain	University of Essex
Australia	Central Queensland University
Italy	University for Foreigners Perugia
China	Tohoku Normal University
Korea	Daegu National University of Education

(3) Characteristics of Sendai City

Sendai is a city with a population of one million, and is the political and economic center of Japan's Tohoku (northeast) Region. Although Sendai is a large city, it is known throughout Japan as a modern city in harmony with nature.

The city possesses beautiful scenery, such as the Hirose-gawa River that runs through central Sendai, and the lush zelkova trees that line its streets. Greenery is especially abundant in the center of the city, which has tree-lined streets and parks. As a result, Sendai is called the "City of Trees."

Sendai has many universities and is also well-known as an academic city. Its universities and research institutes have been contributing to the development of the high-tech industry.

Sendai also values history and culture. Many traditional events, such as the Sendai Tanabata Festival, continue to this day. The Sendai International Music Competition and the Johzenji Streetjazz Festival are also held in the city, along with many theatrical performances. We invite you to discover Sendai, a modern city that retains its natural beauty and tradition.

◇Outline of the course

Characteristics of the course

Miyagi University of Education trains teachers. We have a variety of majors such as Liberal arts, Natural science, Art and Gymnastics.

Japanese and Japanese Culture Training Course students can attend a variety of lectures including Art and Gymnastics. Moreover, students can receive high quality education in small classes and can attend a number of exchange activities with Japanese students and foreign students. Since our university has a network of UNESO schools, Students can acquire realistic experience out of university to attend the cultural exchange activities and to study about the sustainable development education.

① Number of students to be accepted

Eight students each year

② Period of the course

From October 1, 2010 to September 30, 2011

③ Overview of classes

(1)Japanese education

According to the student's level, there are 11 classes from beginners' to advanced level. The course runs for one year, and students can learn with a small number of foreign students.

Middle level class	Students who have studied Japanese over 300 hours. 1credit
Middle-class 1A	Middle-class first step grammar, speaking and hearing.
Middle-class 1B	Middle-class first step grammar, reading and Listing.
Middle-class 2 A	Middle-class second step grammar, speaking and hearing.
Middle-class 2B	Middle-class second step grammar, reading and Listing.
Middle-class 3A	Middle-class third step grammar, speaking and hearing.
Middle-class 3B	Middle-class third step grammar, reading and Listing.

Middle level class	Students who have studied Japanese over 300 hours. 1credit
Middle-class 1A	Middle-class first step grammar, speaking and hearing.
Middle-class 1B	Middle-class first step grammar, reading and Listing.
Middle-class 2 A	Middle-class second step grammar, speaking and hearing.
Middle-class 2B	Middle-class second step grammar, reading and Listing.
Middle-class 3A	Middle-class third step grammar, speaking and hearing.
Middle-class 3B	Middle-class third step grammar, reading and Listing.

(2)Special subjects (selection)

Students can select any subjects depend on their Japanese ability.

Special subjects (Example)	Students can select any subjects depend on their Japanese ability.(2 credits)
Comparative study of Japanese culture	Comparing Japanese culture with overseas cultures
Cross-cultural educational	Case study of contact and friction with foreign cultures
Japanese language education	Fundamental study for Japanese language teachers
Japanese language and culture	Comparative study of Japanese language
Japanese structure and expression	Fundamental study of Japanese language structure
Calligraphy	Fundamental techniques in calligraphy
Japanese traditional Entertainment	Foundations of Japanese folk dance and drums
Ceramic art	Foundations of ceramic art

(3) Final report

Japanese and Japanese Culture Training Program students should give a presentation on their research at “The Japanese Cultural Studies Exhibition (July, 2009).” They should write a “foreign students’ educational report PHILIA” No. 9 (July 2010).

(4) Field Study

Our university supports international understanding educational activities. Foreign students have the opportunity to participate in international understanding educational activities.

⑤Teaching system

Students can pursue their individual study under the supervising professor, and tutor of the Japanese students will help with their research activities. Japanese education Teaching System

Foreign student committee	Affiliation lecture	Contact	
		@staff.miyakyo-u.ac.jp	+ 81-22-214-
Takada Toshiko	Science Education	toshiko	3415
Torao Yutaka	Art Education	tora	3446
Kurato Teru	Music Education	teru	3513
Harada Hiroyuki	Music Education	harada	3436
Ichinose Tomonori	Japanese language Education	ichinose	3381
Takahashi Akiko	Japanese language Education	akiko12	3371

Students can pursue their individual study under the supervising professor, and tutor of the Japanese students will help with their research activities.

Event name	Contents	
⑥Events	Getting close to the nature of and Japanese culture	
Hike	May	
Introduction to Japanese culture	June October	Dressing of <i>kimono</i> , tea ceremony, <i>shamisen</i> , etc.

Research trip	March	Short trip to Japanese Traditional spot.
Global Cafe	October	International students open one-day cafe.
Japanese speech contest	December	Foreign students speak about the experience of their stay in
Meetings concerning foreign students	December	Exchange information between foreign students, Japanese students and the staff of the university.
Winter skiing training camp	February	Lessons in basic skiing

⑦Requirements for completion and Certificates

The requirements for completion of this course are to obtain 8 credits in Japanese language and 12 credits in Japanese culture, and submit a final research paper. After completion of this course, students receive a graduation certificate.

⑧Credit transfer

Through the results certificate and the attendance certificate, the credits earned at MUE will be transferred to the students' home institution

⑨Eligibility of applicants

Applicants to this course have studied Japanese for over 600 hours, or passed level 3 or above of Japanese Language Proficiency Test (or equivalent). Applicants must be enrolled in courses or programs for studying Japanese or Japan.

⑨Eligibility of applicants (continued)

Students in the first year of university are not eligible for this course.

◇Housing

Students should live in the international student house of Tohoku University.

See(<http://www.bureau.tohoku.ac.jp/kokusai/exchangej/hallj/index.html>)

Housing

2007 fiscal year	2008 fiscal year	2009 fiscal year
One person	None	Three
International house		International house

◇Inquiry

Address: Aramaki aza Aoba, Aoba-ku Sendai City, Japan 9800845 International Exchange Section

Contact	Email
Kamata Michio Suganami Kumiko	ryugaku@adm.miyakyo-u.ac.jp kamatam@staff.miyakyo-u.ac.jp K-taka@staff.miyakyo-u.ac.jp

Phone: +81-22-214-3654

FAX: +81-22-214-3621

Home page: <http://www.miyakyo-u.ac.jp/>

Akita University (Akita)



This program is for studying in an incomparable environment enriched with beauty of the nature and traditions. Japanese Studies Students at Akita University can deepen their understanding of Japanese culture and local culture from a unique view point of Akita.

They can also experience Japanese language, culture and other views through interaction with Japanese students and other international students of various cultural backgrounds.

University's Overview

◆ History and Features

Akita University is a comprehensive university comprising three faculties, namely, the Faculty of Education and Human Studies, the School of Medicine, and Faculty of Engineering and Resource Science. Based on their respective history and tradition, these three faculties have integrated with modern nature.

It was the Faculty of Liberal Arts and Science in 1949, and was renamed the Faculty of Education, the Faculty of Education and Human Studies was formed in 1998 after evolution and reorganization. It has a long history. Up to the end of the past 120 years, as a center of teacher's training and local culture it has produced a lot of talented people for the fields of education, liberal arts and culture.

The School of Medicine was founded in 1970, which was a Faculty of Medicine of National University initially set up postwar.

The latest medical education is being practiced here. Its graduates are now engaged in scientific researches and medical activities in various universities and medical institutions of Japan.

The faculty of Engineering and Resource Science is celebrated for its particular position of the sole specialized mineralogy education and research institution in our country. It was reorganized in 1998 in order to keep abreast of the time and suit the development of science and technology.

The international exchange is very brisk in Akita University.

We have inter-university agreements with the following 25 universities in 12 countries.

We also have inter-faculty agreements with the following 15 faculties of universities in 9 countries.

◆ Environments of Akita University

Akita University is in the central part of Akita City, located on the western side of the Tohoku District (the Northeastern Part of Mainland).

Akita is one of the major cities of the District with the population of 335,000. It is situated at lat. 40° N and long. 140° E. The average temperature in Akita area is -0.7° C in the snowy midwinter and 25° C in the sunny midsummer.

Akita is rich in natural beauty of the seasons. Students can enjoy hiking, climbing, fishing, fruit picking, and hot springs. There are also numerous places of historical interest as well as traditional festivals in and around Akita.

People in this area are friendly and warm-hearted, as you will find.

◆ International Exchanges (As of May 1, 2009)

Number of international students: 142 (15 countries)

Number of international researchers: 2 (2 countries)

◆ Number of Students (As of May 1, 2009)

Faculties: Faculty of Education and Human Studies;
School of Medicine;
Faculty of Engineering and Resource Science

Number of Teachers: 564

President: YOSHIMURA Noboru Phd

Number of Students: Faculties 4,466

Graduate Schools 571

total 5,037

Outline of the Japanese Studies Program

1. Name of the Course

Japanese Studies program, Akita University

2. Program Descriptions

◆ Number of Students to be accepted : Five

◆ Period of the Course (Semester)

• Term 1: October 2010—February 2011

• Term 2: April 2011—September 2011

Each term lasts 15 weeks of which the last is the exam week.

◆ Aims and Contents of the Course

This program is for those students from other countries who are regular students that wish to improve their Academic Japanese skills to pursue their academic goal in university. We also accept students who have interested in starting their research about Japan from an unique view point of Akita area.

The Japanese Language course's aims are as follows:

(1) To be able to understand lectures in Japanese and take notes in Japanese.

(2) To be able to write papers and technical reports in Japanese.

(3) To be able to participate in discussions in Japanese in upper level seminar classes.

The Japanese Culture course's aims are to get basic knowledge of the latest Japanese cultural studies analyzed through local viewpoint. Students will Akita Study and Tohoku Social Study and so on.

At the end of the one-year-course, all Japanese studies students are required to write short papers as final reports.

Classes are all conducted in Japanese.

3 . Class Descriptions (Each classes 90 minutes long)

a-1 Japanese Language (required)

Title	Number of Classes		Content
	Term 1	Term 2	
Intermediate Japanese I		30	Conversation Skills on Campus
Intermediate Japanese II	30		Conversation Skills on Campus
Advanced Japanese I	15		PC skills in Japanese (MS-WORD)
Advanced Japanese II	15		Writing Skills for Research Paper
Advanced Japanese III		15	Discussion / Oral Presentation Skills
Advanced Japanese IV		15	Writing Skills for Research Paper
Advanced Japanese V		15	Advanced Reading
Advanced Japanese VI	15		Advanced Reading
Advanced Japanese VII		15	PC skills in Japanese (Excel and PowerPoint)
Advanced Japanese VIII	15		Advanced Grammar and Expressions
Advanced Japanese IX	15		Newspaper Reading
Advanced Japanese X		15	Newspaper Reading

b Research Paper (required)

Title	Number of Classes		Content
	Term1	Term 2	
Research Paper	15	15	Writing a paper based on learning in Japanese Language classes and Japanese Culture classes

※Latest Research Paper

http://www.pcix.akita-u.ac.jp/inter/in_class.html

c Optional Classes

Non-credit classes such as Calligraphy and Kanji may be offered according to the students' needs.

a-2 Japanese Culture (Elective Required, Conducted with regular Japanese students)

Title	Number of Classes		Content
	Term 1	Term 2	
Introduction to Akita Study I : Looking for cues to design our city		15	Exploring proper ways to develop Akita
Introduction to Akita Study II : Food Culture in Akita	15		Getting basic knowledge of unique and various food cultures in Akita
Introduction to Multi-Cultural Communication : Finding micro societies closed to us		15	Discussing with Japanese students and Finding micro societies close to us
Introduction to Multi-Cultural Communication II : Finding culture of people	15		Discussing with Japanese students and finding culture of people
Nihon Jijo I : Japanese Culture and Society		15	Japanese Culture / Cross-cultural Comparison
Nihon Jijo II : Japanese Culture and Society	15		Japanese Culture / Cross-cultural Comparison
Introduction to the Study of Japanese Society :Japanese Culture and Society as seen from Tohoku		15	Understanding Japanese Society as seen from Tohoku area
Multi-Cultural Interaction :Practicing Cross-cultural Communication	15		Discussing with Japanese students and Improving communicative ability
Varieties of Japanese Dialects		15	Getting knowledge of various dialects in Akita and Japan
World of Japanese Language :Looking over Modern Japan through Language		15	Getting knowledge of Japanese language society based on familiar examples
Reading Tsurezuregusa	15		Understanding of classical literature written in Japanese
Latest Information Technology in Japan : Thinking with Japanese Students		7	Discussing with Japanese students and understanding the latest Information Technology in Japan
Mechanical Engineering discovers new World	7		Understanding effects of Mechanical Engineering on our life
Nihongo Communication I		15	Phonetics
Nihongo Communication II	15		Phonetics

◆ Responsible staff

• Professor MIYAMOTO Ritsuko
(Faculty of Education and Human Studies,
Vice director of International Exchange Center)
E-mail : miyamotor@gipc.akita-u.ac.jp

• Professor SEGAWA Hazuki
(Professor of International Exchange Center)
E-mail : segawa@gipc.akita-u.ac.jp

• Four collaborating instructors

◆ Other activities

To help the students, various non-credit classes are offered. School trips such as a ski trip are also offered in order to help them understand the Tohoku region and Akita, as well as to promote interactions among the students.

◆ Certificate

Certificates of Japanese studies are given at the end of the course when the students have satisfactorily met the requirements.

◆ Credits

Exchanging credits are officially agreed between Faculty of Education and Human Studies, Akita University, and the six Universities abroad:

China : Heilongjiang University,
Dalian Nationalities University,
Lanzhou University
Australia: Griffith University
U.S.A : St. Cloud State University of Minnesota,
Korea : Hanbat National University,
Woonkwang University
New Zealand: Auckland University of Technology

◆ Qualifications and Conditions of Applicants

The applicants should be very determined to learn the Japanese language and other aspects of Japanese culture. Since all the classes are conducted in Japanese, those who wish to apply for our program should at least have mastered basic grammar of the language, should be able to take part in everyday conversation and should be able to read and write non-technical papers.

To specify, at the time of arrival in Japan, the applicants must be enrolled in the university out of Japan in a faculty or department that offers studies related to Japanese language and culture.

Those who are going to apply for our program should have studied Japanese longer than 300 hours and have learned more than 1,500 words and 500 Kanji (Chinese characters). Oral and written placement tests will be given at the beginning of the program.

4. For more information contact :

E-mail : ryugaku@jimu.akita-u.ac.jp



Trips to Hokkaido in 2008 summer

Accommodations

The International Students House provides housing for international students who are studying in Akita University. The house is designed to help students fulfill their academic achievements and to promote intercultural understanding. The three-story House has 30 rooms for single students, 5 rooms for married students.

Moreover, a new International House has been built. It has 20 rooms: 10 rooms for students and 10 rooms for researchers.

Most of new international students can be admitted to these housings.

Contact

AKITA University,
International Exchange Division,
International Student Section

ADDRESS : Akita University
Tegata -Gakuenmachi 1-1
Akita City, 010-8502, JAPAN

TEL : 018-889-2258
FAX : 018-889-3012
E-mail : ryugaku@jimu.akita-u.ac.jp

Home Page : <http://www.akita-u.ac.jp>

Yamagata University (Yamagata)



Explore the world of language, literary classics, everyday speech, and more!

《 **Name of the course** 》

Yamagata University Japanese Studies Program for International Students

◇ **Yamagata University**

(1) Yamagata University came into being in 1949 but its origin goes back to the nineteenth century with the founding of Yamagata Normal School in 1878. Today the university consists of 6 faculties and 5 graduate schools, together with 10 centers. It plays a central role in education and research in Yamagata Prefecture as a major comprehensive public institution with some 850 academic staff and approximately 10,000 students. Its idea of education is to offer specialized programs of natural sciences, humanities, and social sciences closely connected to each other as well as a wide range of liberal arts programs, and to foster global citizens who will play leading roles both in home and around the world. The university's academics aim to pursue and achieve excellence in a wide range of research activities and scholarship, and to contribute to development in the global and local communities.

(2) International Exchange (Oct 1, 2009)

1) Number of academic exchange agreements: 84 (28 territories)

2) Number of international students: 197 (22 territories)

(3) Yamagata Prefecture

Yamagata Prefecture is blessed with four distinct seasons and an abundance of nature close at hand. Hot springs can be found throughout the prefecture and you will experience the warmth and genuine hospitality of the people in Yamagata.

◇ **Contents of the course**

Yamagata University offers an excellent range of courses on Japanese language and culture. Japanese language courses are designed for students to develop a language competence, which lays the essential foundation for study. Multicultural studies courses and specialized courses cover a broad spectrum of Japanese culture, including such aspects as linguistics, literature, history, multicultural relations, sociology, geography, economics, politics, art and education. Students will also write an essay on an approved topic in Japanese and present it at the end of the course.

(1) **Number of students to be accepted:** two

(2) **Period of the course:** from October 1, 2010 to September 30, 2011

(3) **Outline of the courses**

Courses run for 15 weeks each Spring and Fall Semester. Category ① contains Japanese language courses for international students while courses in categories ② and ③ are open to both Japanese and international students. To complete the program, students must take twelve or more courses, with six or more from categories ① and ② below. It is compulsory for all students of this program to take Independent Study Project in category ①.

① **Japanese Language Courses**

※[Sp]: Spring Semester, [Fa & Sp]: Fall Semester

①a. Japanese Language Courses for Undergraduates

JAPANESE 3A Integrated (SUGAWARA Kazuo, AOYAGI Taeko) Upper Intermediate grammar, speaking and listening [Fa & Sp]

JAPANESE 3A Reading (IUCHI Toshimi) Upper Intermediate reading [Fa & Sp]

JAPANESE 3A Writing (UTSUMI Yumiko) Upper Intermediate writing [Fa & Sp]

JAPANESE 3B Integrated (KITAGAWA Kinuyo, YOKOSAWA Yumi) Lower Intermediate grammar, speaking and listening [Fa & Sp]

JAPANESE 3B Reading (AOYAGI Taeko) Lower Intermediate reading [Fa & Sp]

JAPANESE 3B Writing (KUROSAWA Akiko) Lower Intermediate writing [Fa & Sp]

KANJI III (YOKOSAWA Yumi) Intermediate kanji [Fa & Sp]

JAPANESE 4 Reading (KUROSAWA Akiko) Lower Advanced Reading: This course aims to develop basic skills to read authentic Japanese writings. [Sp]

JAPANESE 4 Speaking (UTSUMI Yumiko) Lower Advanced Speaking: The aim of this course is to help students acquire the knowledge, strategies and skills to effectively interact in Japanese with faculty, staff and other students in the academic environment. [Sp]

JAPANESE 4 Writing (KUROSAWA Akiko) Lower Advanced Writing: Students learn how to develop an argument effectively, using expressions appropriate for writing essays. [Sp]

JAPANESE COURSES	CREDIT HOURS		
	Sp	Fa	Total
Japanese 3	210	210	420
Japanese 4・6	120	120	240
Japanese 5・7	90	90	180
Japanese 8・9	30	30	60
Japanese I・II	30	30	60

JAPANESE 4 Listening (UTSUMI Yumiko)
Lower Advanced Listening: The aim of this course is to acquire and enrich vocabulary pertaining to various areas of social life and to understand Japanese modern society. [Sp]

JAPANESE 5 Reading (ENDO Yoshitaka)
Upper Advanced Reading: The purpose of this course is to develop skills to read authentic Japanese writings on a wide range of subjects. [Sp]

JAPANESE 5 Speaking (SUGAWARA Kazuo)
Upper Advanced Speaking: The aim of this course is to develop communication skills, focusing on the appropriate use of Japanese for the situations in which students face daily on campus. [Sp]

JAPANESE 5 Writing (WATANABE Fumio)
Upper Advanced Writing: This course will focus on how to write objective facts and subjective opinion, and expressions for these writings. The main goal is for students to acquire skills of academic writing in Japanese. [Sp]

JAPANESE 6 Reading (SONODA Hirofumi)
Lower Advanced Reading: This course aims to develop basic skills to read academic writings. [Fa]

JAPANESE 6 Speaking (UTSUMI Yumiko)
Lower Advanced Speaking: The aim of this course is to help students acquire speaking skills necessary for studying and conducting research at university. [Fa]

JAPANESE 6 Writing (KUROSAWA Akiko)
Lower Advanced Writing: This course aims to develop writing skills necessary for writing academic papers. [Fa]

JAPANESE 6 Listening (UTSUMI Yumiko)
Lower Advanced Listening: The aim of this course is to help students develop their listening skills to understand natural Japanese on complex social issues. [Fa]

JAPANESE 7 Reading (ENDO Yoshitaka)
Upper Advanced Reading: The purpose of this course is to develop skills to read authentic Japanese writings on a wide range of subjects. [Fa]

JAPANESE 7 Speaking (SUGAWARA Kazuo)
Upper Advanced Speaking: The aim of this course is to improve communication skills, focusing on analyzing the result of questionnaire, organizing it, and presenting it to others. [Sp]

JAPANESE 7 Writing (UTSUMI Yumiko)
Upper Advanced Writing: The aim of this course is to help students develop the ability to write essays required for assessment at university. [Fa]

JAPANESE 8 & 9 INDEPENDENT STUDY PROJECT I & II:
Compulsory to all students of this program. Students write an essay in Japanese on a topic agreed in conjunction with the advisor. They will present a paper on their topic at the end of the course. [Fa & Sp]

①b. Specialized Japanese language courses at the Faculty of Literature and Social Sciences

JAPANESE FOR INTERNATIONAL STUDENTS I
(WATANABE Fumio): A training of the skill of Japanese oral communication for foreign students. [Sp]

JAPANESE FOR INTERNATIONAL STUDENTS II
(NAKAZAWA Nobuyuki): A training of the skill of Japanese presentation at the seminar. [Fa]

② **Multicultural Studies** (General Education courses)

JAPANESE CULTURE (YU Ming-Hwang)
This course utilizes local resources in Yamagata for international students to experience aspects of the Japanese culture such as tea ceremony, flower arrangement, Zen meditation, and hot springs.

MULTICULTURAL STUDIES I (YU Ming-Hwang)
Life events in Japan: The purpose of this course is to understand Japanese culture and society through important life events such as pregnancy, giving birth, bringing up a child, and wedding ceremonies. [Sp]

MULTICULTURAL STUDIES II (UTSUMI Yumiko)
Foreign residents in Japan: The aim of this course is to promote understanding of the situation and issues of foreign residents in Japan, appreciation of diverse cultures, and to develop critical consciousness through discussion. [Sp]

MULTICULTURAL STUDIES III: (YU Ming-Hwang)
The Japanese perspective on life and death: The purpose of this course is to understand the Japanese perspective on life & death through the most important and traditional ceremony, the funeral. [Fa]

MULTICULTURAL STUDIES IV (GRINDA Reinhold)
Europe and Japan: This course focuses on cultures of Europe and Japan [Fa]

③ **Courses in Humanities and Social Sciences**
a. The following courses are taught by academic staff at the Faculty of Literature and Social Sciences.
* : Introductory courses offered as a part of general education for undergraduates

UNDERGRADUATE SEMINAR IN JAPANESE LINGUISTICS (NAKAZAWA Nobuyuki): A reading of Japanese literature, to study historical Japanese language. [Sp]

TOPICS IN JAPANESE LINGUISTICS (NAKAZAWA Nobuyuki) :Explicates philology of Japanese language. [Sp]

FUNDAMENTALS OF THE STUDY OF JAPANESE GRAMMAR (LINGUISTICS)*(WATANABE Fumio):
Explicates grammar and meaning of Japanese from the perspective of description.[Sp]

HISTORY OF JAPANESE LANGUAGE (LINGUISTICS)*(NAKAZAWA Nobuyuki):
Explicates the history of Japanese language. [Sp]

INTRODUCTION TO JAPANESE LINGUISTICS AT AN ADVANCED LEVEL I (WATANABE Fumio):
Explains the descriptive grammar of modern Japanese. [Sp]

INTRODUCTION TO JAPANESE LINGUISTICS AT AN ADVANCED LEVEL II (NAKAZAWA Nobuyuki):
Explicates historical materials of Japanese language. [Fa]

DIRECTED READING IN JAPANESE LINGUISTICS (NAKAZAWA Nobuyuki):
A reading of dissertations of historical Japanese linguistics. [Fa]



Tea ceremony→

UNDERGRADUATE SEMINAR IN JAPANESE LINGUISTICS(WATANABE Fumio): This course aims to improve the students' skills of discussion and writing reports on various topics of modern Japanese grammar and meaning. [Fa]

STUDIES OF VISUAL IMAGES (ABE Koji): Analysis of Visual images (Movie, Video, Animation). Including some critical comments on Japanese Cinema.

ORAL LITERATURE IN THE TOHOKU DISTRICT (CULTURE)* (KIKUCHI Hitoshi): This course will examine the characteristics of typical folk tales in the Tohoku district. [Fa]

JAPANESE LITERATURE-CLASSICAL (KIKUCHI Hitoshi): A close reading of "waka" (short poems) and narrative works written mainly in the "Heian" and "Kamakura" periods.[Fa]

THE DEBATES OF HISTORY (History) * (MIKAMI Yoshitaka): This lecture will introduce various debates on Japanese history.[Sp]

HISTORY ON COINS IN JAPAN (History) * (MIKAMI Yoshitaka) This lecture will survey Japanese history from a viewpoint of coins. [Fa]

INTRODUCTION OF JAPANESE HISTORY I (HISTORY)* (MIKAMI Yoshitaka): This course will survey controversies in historiography concerning Japanese history.[Sp]

TOPICS IN JAPANESE HISTORY I (MIKAMI Yoshitaka): This lecture will clarify problems in Japanese ancient history, making use of documentary and excavated written materials. [Fa]

RECONSIDERATION OF YUKICHI FUKUZAWA (HISTORY)* (ITAGAKI Tetsuo): This course will explore the relation of the thoughts of Yukichi Fukuzawa and the modern Japanese society. [Sp]

WHAT IS THE EDO PERIOD? (SEMINAR) (ITAGAKI Tetsuo): Aims to clarify the characteristics of the "Edo" period from variety of perspective. [Fa]

JAPANESE HISTORY II (HISTORY) (ITAGAKI Tetsuo): This is a course on Japanese history of thoughts in the early modern, modern and contemporary ages. [Sp]
INTRODUCTION OF JAPANESE HISTORY II (HISTORY) (ITAGAKI Tetsuo): This is a course on the structure of Japanese thoughts. [Fa]

UNDERGRADUATE SEMINAR IN JAPANESE HISTORY II (ITAGAKI Tetsuo): Aims to clarify the structure of Japanese history in early modern, modern and contemporary ages. [Sp/Fa]

READINGS IN JAPANESE HISTORY II (ITAGAKI Tetsuo): A close reading of Japanese historical documents in the early modern, modern and contemporary ages. [Fa]

INTRODUCTION TO BUDDHISM (CULTURE)* (MATSUO Kenji): An introduction to Buddhism, focusing on Japanese Buddhism.[Sp]

CITYSCAPE OF KAMAKURA IN THE MIDDLE AGES (HISTORY)* (MATSUO Kenji): Discusses the real state of Kamakura as the metropolis" of Japanese samurai in the middle ages. [Fa]

UNDERGRADUATE SEMINAR IN CHINESE LITERATURE (FUKUYAMA Yasuo): A reading of classical Chinese literature according to Japanese grammar. [Sp]

REGIONAL GEOGRAPHY (YAMADA Hirohisa): This course aims to clarify the relationship between various phenomena in a specific region and its historical and natural environment. [Fa]

INTRODUCTION TO COMPARATIVE CULTURE & REPRESENTATIONAL CULTURE (Staff): This course will trace and teach fundamental concepts and methods of cultural studies, applying it to the analysis of literature, cinema, picture, photograph, cartoon and so forth, and also of such problems as nation, state, community, mutual relation between cultures and so on.[Fa]

HISTORY OF CULTURAL EXCHANGE (ITO Yutaka): This is a course on the cultural exchange between America and Japan, focusing on Earnest. F. Fenollosa and Tenshin Okakura. [Sp]

JAPAN ECONOMY (TATEMATSU Kiyoshi): This course will examine the characteristics of contemporary Japanese economy and clarify the problems that it faces.[Sp/Fa]

JAPAN'S DIPLOMATIC HISTORY (MATSUMOTO Kuniyuki): This course will survey the diplomatic history after the Meiji period through visual and documentary materials and helps students to acquire the knowledge necessary to consider Japan's foreign policy in the future. [Sp/Fa]

JAPANESE ECONOMIC HISTORY(IWATA Koutaro): This course will trace the Japanese economic history from the 13th to 19th century, clarifying the characteristics of Japanese society.[Fa]

③**b.The Faculty of Education, Art and Science**
INTRODUCTION TO JAPANESE LINGUISTICS A (SUGA kazuyoshi): An Introduction to Japanese linguistics, focusing on phonology, writing system, lexicon, and dialects. [Sp]
INTRODUCTION TO JAPANESE LINGUISTICS B (SUGA kazuyoshi): An Introduction to Japanese linguistics, focusing on grammar, honorific system, and history. [Sp]

GENERAL STATEMENT OF JAPANESE CULTURE (NAKO kikuo) :General Statement of Japanese Classic Literature, Modern Literature and books about Japanese Thoughts. [Sp]

GENERAL STATEMENT OF HISTORY ABOUT JAPANESE LITERATURES (NAKO kikuo) : General Statement of History about Japanese Classic Literature (Waka – verse [Manyou, Kokinsyuu and Sinkokinsyuu] , Heian Period Monogatari and Diary) and Modern Literature (Meiji, Taisyuu and Syouwa Period Novels)[Sp]

INTRODUCTION OF JAPANESE LANGUAGE PEDAGOGY (SONODA Hirofumi) :Surveys the Japanese Language Pedagogy. [Sp]

INTRODUCTION TO JAPANESE LINGUISTICS (SONODA Hirofumi):Surveys the Japanese linguistics.[Fa]

JAPANESE LINGUISTICS (SUGA Kazuyoshi) : A case study on Japanese linguistics .[Fa]

ADVANCED JAPANESE LINGUISTICS (SUGA Kazuyoshi) :This course will examine the grammar of modern Japanese. [Fa]

SEMINAR IN INTERCULTURAL STUDIES (SONODA Hirofumi):Discusses some topics in intercultural studies. [Fa]

③**c. The Institute of Arts and Sciences**
AN INTRODUCTION TO JAPANESE LANGUAGE TEACHING* (KUROSAWA Akiko): This course analyzes the Japanese language by exploring learners' problems in grammar and pronunciation. [Fa]

(4) Academic advisors

- 1) Program coordinator
Akiko KUROSAWA (Professor in Linguistics,
Institute of Arts and Sciences)
- 2) Supporting academic staff
Yumiko UTSUMI (Associate Professor in
Japanese Language Teaching, Institute of
Arts and Sciences)
Ming Fang YU (Associate Professor in Sociology,
Institute of Arts and Sciences)
- 3) Academic staff in charge of the courses in (3)
above (The Faculty of Literature and Social
Sciences, the Faculty of Education, Art and
Science, the Institute of Arts and Sciences)
An academic advisor will be assigned to
each student to aid in completion of the essay
project.

(5) Excursions and other events

Students will have the opportunity to meet Japanese people by staying with or visiting a family in Yamagata, through day trips, a field trip, and local festivals (e.g. Hanagasa Matsuri). They can also participate in activities such as a tea ceremony, flower arrangement, kokeshi doll painting, Zen meditation, and kimono wearing.

〈Annual Event & Activity Calendar〉

	Events & Activities
Oct	Day Trip
	Campus festival
Jan	Social Event for Residents and International Students of Yamagata
May	<i>Oshiro</i> -Festival (Kaminoyama City)
Aug	<i>Hanagasa</i> Festival (Yamagata City)
Sep	Field Trip

5) Certificate

The students who fulfill the necessary requirements can obtain a certificate of completion at the end of the program.

(6) Credits

Credits will be given and a transcript will be issued to the students who have satisfied the course requirements. Their home institution has the final authority to determine how the approved credits are used to fulfill specific major requirements.

(7) Qualifications and conditions of applicants

- 1) Applicants are expected to have majored or minored in Japanese language and/or Japanese studies.
- 2) Applicants are expected to have a good command of Japanese, an equivalent of Level 2 of the Japanese Language Proficiency Test. They are expected to have the ability to express their opinions and interact with Japanese people using Japanese.



Kimono

◇ Accommodation

- 1) For accommodation, an international student at Yamagata University has options such as the Yamagata University International House, a private boarding house (usually half board), and a studio apartment. If you are made an offer of a place at Yamagata University as a student of the Japanese Studies Program, you will receive more detailed information on accommodation.
- 2) Number of students in this program lived in this accommodation. (2007: 2, 2008:1,2009:1)



↑ International Student House



← Campus in Spring

◇ How to Contact Us

~ International Exchange Division ~
Address: 1-4-12, Kojirakawa-machi
Yamagata-shi, Yamagata Prefecture,
990-8560 JAPAN
TEL : +81 23 628 4118
FAX : +81 23 628 4849
E-mail: rgkokusai@jm.kj.yamagata-u.ac.jp
URL:
<http://www.yamagata-u.ac.jp/index-j.html>
Program coordinator: Dr. Akiko KUROSAWA
E-mail: akuros@kdw.kj.yamagata-u.ac.jp

Ibaraki University (Ibaraki)



The course is offered to improve both the students' Japanese communicative competence and the understanding of Japanese culture and way of life through studying with Japanese students and living in Japanese society.

◇University Overview

1. Characteristics and History

Ibaraki University was established in 1949 and has been developing as an university which has five colleges (Humanities, Education, Sciences, Engineering, and Agriculture) and four graduate schools (Humanities, Education, Natural Sciences and Engineering, and Agriculture). Emphasis is put on practical teaching about current and local issues.

2. Faculty and Students

Faculty members: 522
Undergraduate Students: 7,303
Graduate Students: 1,009

3. International Exchange

Ibaraki University has international exchange agreements with 28 universities and institutions in 12 countries. The university has accepted a large number of scholars and students from abroad, which include Japanese studies course students (3 in 2009, 1 in 2008 and 1 in 2007). As of 2009, 236 overseas students including non-regular students are enrolled (141 in the undergraduate level and 95 in the graduate level).

4. General Information about Mito City

Mito City, located in 100 km northeast of Tokyo, is the political, economic and cultural center of Ibaraki Prefecture. The city has rich historical and cultural sites such as Kairakuen, a plum park constructed in the Edo period.

◇Outline of the Japanese Studies Course

The course is offered to improve overseas students' communicative competence in Japanese and understanding of Japanese culture and way of life through studying with Japanese students and living in Japanese society.

1. Number of Students Accepted: Three students

2. Course Period: From October 1, 2010 to September 30, 2011

3. Course Format

- Japanese and Japanese Affairs: Subjects provided at the International Student Center especially for overseas students to learn Japanese language and understand Japan.
- Japanese Culture: Subjects provided as liberal arts subjects for overseas students to learn Japanese culture together with Japanese students.
- Subjects on Japan: Subjects related to Japan which are offered at the College of Humanities.

4. Course Description

Classes are offered in two semesters: the first semester from April to the early August, the second semester from October to the early February. Each semester has sixteen weeks, including one week examination period.

(1) Compulsory subjects

(Classes offered at the International Student Center)

- Japanese
- Seminar on Japanese
- Japanese Sociolinguistics for Foreign students

※No Credit is given for the following Classes

Level	Course Title
Level1	General, Reading/Writing, Oral Presentation
Level2	
Level3	General, Oral Presentation, Intermediate Kanji
Level4	General, Oral Presentation, Advanced Kanji, Academic Writing, Japanese Studies

(Classes offered as liberal arts subjects)

- Japanese sociolinguistics for Foreign Students
- Japanese and Foreign culture Cross-Cultural Communication
- Rediscovery of Japanese culture: From the Ethnological perspective

(2) Elective Subjects:

From among classes offered at the College of Humanities, students may, upon consultation with their advisors, choose and enroll in classes related to Japanese and Japanese culture as well as those others which are useful to understand Japan.

5. Academic Advisors

(1) Program Coordinator

Prof. Masataka Kimura, Faculty of Humanities

(2) Academic Advisors

A faculty member whose specialization fits in with the area of interest of the overseas student is assigned as his/her academic advisor. In addition, a Japanese student who is interested in international exchange is assigned as a tutor to help the overseas student to adapt to the new environment within and without the school.

6. Events

Japanese studies students are welcome to participate in a field trip to the Kanto or Tohoku area together with all other overseas students as well as to the exchange activities with organizations supporting overseas students and the people in the local communities.

7. Course Completion and Issuance of Certificate

After completing required subjects, students are given a certificate of completion.

8. Credit Certification and Credit Transfer

Except for those subjects offered at the International Student Center, credits are given upon completion of class requirements. Credit transfer depends on the policy of the student's home university.

9. Application Requirements

It is desirable that the participants in this course have studied Japanese and have sufficient proficiency to understand lectures and take part in seminars as well to read materials and write reports in Japanese.

◇Accommodations

The International House

•Number of rooms

Single: 38 (Building A,B), 12 (Building D)

Couple: 2 (Building C)

Family: 2 (Building C)

•Rent (per month)

Building A,B 5,900yen

Building D 22,500yen

Building C 14,200yen

•Information for daily life and commute time

The maximum period of stay is one year

About 15-minute walk from the university

◇Contact Office

Student Exchange Division

Address: 2-1-1 Bunkyo, Mito City, Ibaraki

310-8512 Japan

Phone: +81-29-228-8056

Fax : +81-29-228-8594

URL: <http://www.ibaraki.ac.jp>

University of Tsukuba (Ibaraki)



◇ Program features

(1) Program aims

The primary aim of this program is to help students improve their Japanese language ability. In addition, this program provides students with the opportunity to deepen their understanding of Japan through the study of a broad range of subjects related to Japanese language and culture.

(2) Program structure

- ① This program offers many courses designed specifically for the international students in the Japanese Studies Program. Students may also take other courses, according to their individual interests.
- ② This program places special emphasis on learning about Japanese language and culture through practical experience, both inside and outside the classroom.
- ③ Students are required to write and submit a final thesis. These are published annually in the collection *Ibunka to no Deai* (“Intercultural Encounters”).
- ④ Students receive personal attention and individual guidance from several advisors and tutors.

◇ Overview of the University of Tsukuba

(1) History and distinctive characteristics

The University of Tsukuba was established in October of 1973, maintaining the distinctive character and traditions of its predecessor, the Tokyo University of Education, while at the same time carrying out extensive reforms—the first of their kind in Japan—in response to a variety of internal and external demands on modern Japanese universities. The distinctive characteristics of this university—“new systems for education and research,” “new autonomy,” “an open university”—have attracted widespread attention and contributed to the leading role this university has played in the reform of higher education in Japan.

(2) Enrollment etc. (as of April 1, 2009)

–Undergraduate colleges: School of Humanities and Culture, School of Social and International Studies, School of Human Sciences, School of Life and Environmental Sciences, School of Science and Engineering, School of Informatics, School of Medicine and Medical Sciences, School of Health and Physical Education, School of Art and Design,

–Number of faculty members: President, Vice-presidents (7), Professors, Associate Professors, Assistant Professors, Research Associates
Total: 1,678

–Number of students: undergraduate (10,190), graduate (6,556)
Total: 16,746

(3) International exchange

– Number of international students: 1,522 (101 countries)
(as of May 1, 2009)

–Number of visiting scholars etc.: 1,168 (FY2008)

(4) Number of international students in the Japanese Studies Program (past 10 years)

Year	No. of students	Year	No. of students
1999	12	2004	14
2000	14	2005	13
2001	15	2006	13
2002	13	2007	10
2003	10	2008	8

(5) Other—information about Tsukuba City

Tsukuba is located 60 km northeast of Tokyo and 40 km northwest of the New Tokyo International Airport (Narita). With Mount Tsukuba (876 m) to the north and Lake Kasumigaura to the east, the surrounding area is rich in natural beauty.

Tsukuba Science City was established (in Tsukuba) by the national government in the early 1970’s, in order to create a structured hub for research and education outside the Tokyo metropolitan area. At that time, many national research institutes and institutes of higher learning were relocated to or newly constructed in Tsukuba. A number of private research and educational institutions followed as well. The Tsukuba Express train connects Tsukuba Science City to central Tokyo in just 45 minutes.

◇ Program content

(1) Enrollment quota

14 students

(2) Length of program/period of instruction

October 1, 2010 to September 30, 2011 (1 year)

(3) Courses

① Required courses

(curriculum for the Japanese Studies Program)

a) Most of these courses are offered by the College of Japanese Language and Culture specifically for the Japanese Studies Program. Participation in these courses is limited to international students in the Japanese Studies Program. Japanese language courses, however, are offered by the International Student Center.

-Japanese (Intermediate—Advanced): The aim of these courses is to help students improve their Japanese reading, listening, and writing ability.
 -Special Studies in Japanese Language and Culture I, II: Students choose a topic in their area of interest, research it over the course of the year, and submit a final thesis.
 -Experimental Fieldwork in Japanese Language and Culture: Students experience Japanese culture firsthand during an overnight field trip.
 -Independent Study in Japanese Language and Culture: Students do preliminary research to prepare for the Experimental Fieldwork course described above. They must also submit a report after completing the fieldwork.

b) Specialized subjects (taught by faculty of the College of Japanese Language and Culture):
 -Japanese Geography: Students carry out field investigations and consider the geographical characteristics of Japan from the perspective of landscape.
 -Japanese History: Video materials will be used as the basis for discussion with Japanese students about a variety of issues in recent modern Japanese history.
 -Japanese Customs: This is a lecture course on Japanese customs and lifestyle from the point of view of folklore.
 -Japanese Politics and Society: Students discuss modern Japanese politics and society with Japanese students.
 -Japanese Literature: Students will deepen their understanding of Japanese poetry by considering its relationship with nature, expressions that show a sense of the seasons, etc.

-Intercultural Communication in Japanese I: This course explores culture through language by focusing on words and expressions closely linked to Japanese culture.
 -Intercultural Communication in Japanese II: Students will research and discuss contemporary Japanese social issues. Video materials will also be used as a basis for discussion.
 -Intercultural Communication in Japanese III: Students work with Japanese students to discuss, debate, and research topics related to Japanese language and culture.
 -Language Lifestyle of the Japanese: This course explores the function and effects of Japanese idioms in spoken and written language.

c) Electives

Students may, with the permission of the individual instructor, take other courses offered by the College of Japanese Language and Culture. They may also take courses offered by other colleges and/or other Japanese courses offered by the International Student Center.

② Number of classroom hours

Course*	Number of hours (First semester)	Number of hours (Second semester)	TOTAL
Japanese (Intermediate—Advanced)	60	45	105
Special Studies in Japanese and Japanese Culture I	30		30
Special Studies in Japanese and Japanese Culture II		90	90
Experimental Fieldwork in Japanese and Japanese Culture	30		30
Independent Study in Japanese and Japanese Culture	30		30
Japanese Customs	15		15
Japanese Politics and Society		15	15
Japanese Literature	15		15
Intercultural Communication in Japanese I	15		15
Intercultural Communication in Japanese II		15	15
Language Lifestyle of the Japanese	15		15
TOTAL	210	165	375

*Some of these courses are not offered every year.

③ Placement (Japanese classes)

Students will be assigned to Japanese language classes based on their level of proficiency according to the results of a placement test.

(4) Advisor system

① Faculty advisors

Name	Affiliation	Position	Area of specialisation
ETO Hideichi	Language and Culture	Professor Dean of the College	British Culture and Literature
SUNAKAWA Yuriko	Language and Culture	Professor	Japanese Linguistics, Japanese Language Education
TANIGUCHI Kosuke	Language and Culture	Associate Professor	Comparative research on Japanese literature
ISHIDA Priscilla	Language and Culture	Associate Professor	Applied Linguistics, Japanese Linguistics
PARK Sunmi	Language and Culture	Assistant Professor	History

② A faculty advisor and an associate faculty advisor will be assigned to each student from the above list, to provide him/her with personalized guidance.

③ A Japanese student from the College of Japanese Language and Culture will be assigned to each international student as a tutor, to assist with his/her studies and lifestyle needs.

④ For the final thesis, each student will be assigned an academic advisor (in addition to the faculty advisors described above), as well as a thesis tutor (a Japanese graduate student). Assignments will be based on the student's topic of interest.

⑤ The University of Tsukuba Committee for the Japanese Studies Program for International Students provides support, at the university level, for the advisor system in the College of Japanese Language and Culture. The Dean of the College of Japanese Language and Culture is the Chair of this Committee. There are four other committee members, including the Director of the International Student Center and the deans/provosts of other related colleges/college clusters.

(5) Field trips, special events, etc.

① Special events

- orientation for Japanese Studies international students (October)
- orientation for government-sponsored international students (October)
- welcome party for Japanese Studies international students (October)
- party for international students, hosted by the university president (November)
- final thesis topic presentations (January)
- final thesis mid-term presentations (May)
- final thesis presentations (September)
- Closing Ceremony (September)

② Field trips

- field trip/fieldwork for "Japanese Geography" (Yamanashi Prefecture; March)
- field trip/fieldwork for "Japanese History" (Hatchobori, Tokyo; July)

(6) Program completion requirements and certificates

A certificate of completion will be given to students who have taken a total of 300 or more credit hours and submitted a final thesis.

(7) Credits and credit transfer

Official credits will not be granted. However, a certificate listing the courses completed, number of classroom hours, final grade, and standard for evaluation will be issued. Decisions regarding the transfer of credits will be made according to the criteria of the student's home university after his/her return.

(8) Qualifications and conditions for applicants

Applicants to the Japan Studies Program must satisfy the following conditions:

① Qualifications

Applicants must, at the time of arrival in Japan, be enrolled in an overseas (non-Japanese) university in a faculty or department that offers studies related to Japanese language and culture. First-year students are not eligible to apply.

② Japanese language proficiency

Applicants must be able to understand lectures, read reference materials, write papers, and make oral presentations in Japanese. Applicants should have a level of Japanese proficiency equivalent to or higher than Level 2 of the Japanese Language Proficiency Test.

◇ Housing

All applicants are eligible for student housing at the University of Tsukuba. Rent is approximately 15,000 yen a month. It is also possible to rent an apartment close to the university.

◇ Contact Information*

ETO Hideichi,
Dean of the College of Japanese Language and Culture
Address: University of Tsukuba
1-1-1 Tennodai
Tsukuba-shi, Ibaraki-ken
JAPAN 305-8572
Phone: +81-(0)29-853-6608
Fax : +81-(0)29-853-6839
E-mail: office@japanese.tsukuba.ac.jp
<http://www.japanese.tsukuba.ac.jp/>

OTSU Takashi,
Head of the Division of International Students
Address: University of Tsukuba
1-1-1 Tennodai
Tsukuba-shi, Ibaraki-ken
JAPAN 305-8577
Phone : +81-(0)29-853-6090
Fax : +81-(0)29-853-6204

* For information on program content, contact the College of Japanese Language and Culture. For information on applications etc., contact the International Student Center.

Utsunomiya University (Tochigi)



Utsunomiya University is surrounded by Nikko as a World Heritage, the most advanced Technopolis, and natural beauty. Students of the program can deeply study a variety of topics, based on “Special Seminar in Japanese Language and Culture I and II”, which are exclusive to the students.

◇ University Overview

1. Outline and Organization

Utsunomiya University is the only national university corporation with a Faculty of International Studies, and this Faculty promotes comprehensive studies of international societies and cultures. The Faculty of Education has a long history of training educators and offers specialized programs that include practical skills training. The Faculty of Engineering conducts leading-edge research and serves as a core facility for the Technopolis industrial center. The Faculty of Agriculture has a long tradition, but it is also producing remarkable results in new fields such as biotechnology and international cooperation.

Faculties : International Studies, Education, Engineering, and Agriculture

Graduate schools : International Studies, Education, Engineering, and Agriculture

Main facilities : International Student Center, University Library, Media Networking Center, and Health Service Center

2. Faculty and Students

Number of faculty: 354

Number of students: 4,446 undergraduates, 944 graduates
(total: 5,390)

3. International Exchange

International students: 352 (from 33 countries)

International visiting scholars: 6 (from 4 countries)

Students in the Japanese Studies Program

2000	5	2001	4
2002	4	2003	5
2004	4	2005	6
2006	7	2007	3
2008	3	2009	4

Number of universities with which we have academic exchange agreements : 41

4. Local Environment

Utsunomiya University is located in the City of Utsunomiya (population: about 500,000), about 100 km north of Tokyo (about 50 min by Shinkansen). Utsunomiya is surrounded by natural beauty, with the Kinugawa River to the east, the Nasu Mountain Range to the north, and world-famous Nikko to the west. With a strong academic tradition, as suggested by its proximity to the Ashikaga School, Japan's earliest-known university, Utsunomiya University has become renowned for cutting-edge technologies such as those being developed at the Technopolis Center.

◇ Outline of the Japanese Studies Course

This course is offered by Utsunomiya University International Student Center, and aims to help students deepen their specialized knowledge of Japanese language, culture and society, while working to improve their Japanese language skills.

1. Student Capacity

12 students

2. Course Duration

October 1, 2010 to September 30, 2011

3. Subjects

Required Subjects :

The following four subjects are those only for the Japanese Studies Course.

Subjects	Overviews	Credits (hours)
Special Seminar in Japanese Language and Culture I	Preparatory seminar focused on the research theme of each student	2 credits (30 hours)
Special Seminar in Japanese Language and Culture II	Write an academic report and give an oral presentation on it	2 credits (30 hours)
Contemporary Japanese I	Read and discuss Japanese culture and society	2 credits (30 hours)
Contemporary Japanese II	Acquire advanced speaking skills	2 credits (30 hours)

Elective Subjects:

Subjects of Japanese Skills

Subjects	Overviews	Credits (hours)
Japanese IIIA	Acquire skills in information processing and reading	1 credit (30 hours)
Japanese IIIB	Improve presentation and discussion skills	1 credit (30 hours)
Japanese IIIC	Learn advanced grammar and vocabulary	1 credit (30 hours)
Japanese IIID	Develop writing skills for research papers	1 credit (30 hours)
Japanese IV (begins in October 2009)	Develop integrated skills of the advanced level of Japanese	1 credit (30 hours)
Japanese IV (begins in April 2010)	Read text written in the classical Japanese syllabary	1 credit (30 hours)

Other Subjects of Japanese Culture and Related Specialized Fields

The following subjects are those given at the Faculty of International Studies, etc., which the students of the Japanese Studies course are supposed to take together with regular students.

Subjects	Overviews	Credits (hours)
Things Japanese	Consider the diversity of Japanese society from many angles	2 credits (30hours)
The Notation System of Contemporary Japanese	Learn contemporary Japanese usage and its historical background	2 credits (30hours)
Japanese Linguistics	Study contemporary Japanese grammar	2 credits (30hours)
History of the Japanese Language	Study an overview of the history of Japanese	2 credits (30hours)
Introduction to Linguistics	Acquire the fundamental knowledge of linguistics	2 credits (30hours)
Contrastive Linguistics	Compare and contrast the Japanese and English languages	2 credits (30hours)
Japanese Culture	Discuss Japanese culture through an examination of modern Japanese literature	2 credits (30hours)
Comparative Study of Culture	Consider the present state of multiculturalism	2 credits (30hours)
Japanese Literature (The Classics)	Read and analyze the puzzles of <i>The Tale of Genji</i>	2 credits (30hours)
Outline of Japanese History	Survey the history of Japan	2 credits (30hours)
History of Japanese Thought	Study the history of Japanese thought with a focus on religion	2 credits (30hours)
History of Japanese Art	Examine realism, ornaments, painting subjects, and artistic techniques	2 credits (30hours)
Thought of Art	Consider the meaning of art in poets, artists, art critics and thinkers in modern Japan	2 credits (30hours)
Japanese Movies	Discuss cultural topics through an examination of famous Japanese movies	2 credits (30hours)

- Each student may take other subjects in accordance with their research topic, if necessary.
- Off-campus classes may also be given, if necessary.

4. Academic Guidance System

(1) Course Advisors and Coordinators

Shunsuke Wakayama (International Student Center)
Yumiko Umeki (International Student Center)
Kazutaka Sasaki (Faculty of International Studies)
Michiyo Takayama (Faculty of International Studies)

Course advisors are responsible for organizing the Japanese Studies course, and help each student to make their study plan and/or decide their research topic. They also coordinate the course at the whole university level.

(2) Supervisors

Teachers of all subject areas in the specialized fields and classes taken by students of the Japanese Studies course.

(3) Administrator : Teiichiro Suzuki (Head of the Student Affairs Section)

5. Course Requirements and Certificate of Completion

Each student is required to take both required subjects (8 credits) and elective subjects (12 credits or more), and give an oral presentation on their academic report at the end of the course.

Each student who has completed a course of study will receive a Certificate of Completion.

6. Transferring Credits

A copy of the student's academic transcript will be issued so that the credits for courses completed at Utsunomiya University can be transferred to those of their home university.

7. Requirements

Students who wish to participate in this program should be majoring in a field related to Japanese language or culture at their home university and should have the intermediate or higher level of Japanese proficiency that will enable them to participate in university life in Japan alongside native Japanese students.

8. Extracurricular Activities

Students may participate in a wide range of extracurricular activities, including skiing lessons, sightseeing excursions, and opportunities to interact with local residents.

◇Housing

○ Condition

There is a student dormitory at Utsunomiya University. However, unfortunately it is always fully occupied, so all the MEXT scholarship students are advised to rent a room at their own expense.

○ Room rent (on average)

1-bed room 30,000yen/month

2-bed room 40,000yen/month

○ Other costs

You may have to pay triple the amount of money for cleaning deposit, reward and handling charge.

You may have to deposit 15,000yen to your gas company to use the gas.

Sign up for house insurance, which costs 4,500-9,000yen.

In total you need 100,000-150,000yen to settle down here.

○ Room facilities

Many rooms are air-conditioned but you have to buy heaters, stoves, kitchenware, microwaves, washing machines etc at your own expense.

◇For more information, please contact:

Student Affairs Division, Student Affairs Department,
Utsunomiya University
Address: 350 Mine-machi, Utsunomiya, Tochigi 321-8505 JAPAN
Tel: +81-28-649-8167
Fax: +81-28-649-5115
E-mail: ryuugak1@miya.jm.utsunomiya-u.ac.jp
Or visit our web site at: www.utsunomiya-u.ac.jp/indexj.html

Gunma University (Gunma)



Deepen understanding of local society of Japan in learning of education and social and Information studies

◇ Overview of Gunma University

① Outline and History

Gunma University was established in 1945 and located roughly 100 km northwest of Tokyo. It is consisted by Faculty of Education, Faculty of Social and Information Studies, Faculty of Medicine, Faculty of Engineering, Institute for Molecular and Cellular Regulation, University Library, University Hospitals, Center for International Education and Research and so on. There are 878 faculty members, 5,275 undergraduate students and 1,488 graduate students.

The Faculty of Education aims to educate students who can attain professional ability as school teachers with a wealth of knowledge, technique and humanity, and who will respond to the various social demands of schools. The Faculty of Education consists of five fields and thirteen majors.

The Faculty of Social and Information Studies:

The new interdisciplinary field of social and information studies, combing humanities and social sciences with information sciences has been developed in an effort to respond to the diverse demands of the advanced information society.

Through the study and the research that seeks ways to preserve humanity in the advanced information age and creates a society in which people can pursue rich and fulfilled lives, we aim to equip students with the international outlook and essentials of social scientific thinking that will enable them to pursue careers in public, business, and both at local and international sectors.

② International Exchange Date (as of November 1, 2009)

International students: 300

(31 countries and 1 region)

Academic Exchange agreements: 71

(20 countries and 1 region)

The number of students attended this program.

2006 : 2, 2007 : 4, 2008 : 2 2009 : 3

③ Feature of Maebashi

Surrounded on three sides by majestic mountain ranges, Maebashi city is located in the northeast corner of the Kanto Plain. With the beautiful landscape, there are a lot of hot springs and varied products through four seasons. It takes two hours by train.. area enjoy the sightseeing as comfort resorts.

Population of foreign residents has been rapidly increasing in ten years and Gunma university makes important role in maintaining the activities for the multi cultural societies.

◇ Contents of the Program

① Enrollment quota: 5 students

(Students are assigned in the Faculty of Education or the Faculty of Social and Information Studies)

② Period of the Program:

October 1, 2010—September 30, 2011

(If shorten the period because of home institute' s reason,

required to win an approval of the pertaining Faculty.)

In the J Program we called, Students are assigned in the Faculty of Education or the Faculty of Social and Information Studies depends on their majors and interests.

③ Outline of Classes

(1)Required Classes

	Fall ' 10	Spring '11
Japanese Language*1	4 classes	4 classes
Japanese studies*2	1 class	1 class
Special Lectures*3	1 class	1 class
Research Work	1 class	1 class

(Individual guidance)

(2)Elective Classes: More than 2 classes from major' s subject in Faculties.

*1 : Japanese Language

Japanese A:Listening, Communication

Japanese B: Oral Expression, Presentation Practice

Japanese C: Reading, Writing

Japanese D: Grammar, Communication

Japanese E: Specialized Reading, Making Thesis

Japanese F: Science Japanese, Reading Practice

*2 : Japanese Studies

Japanese Studies A: Project Work on the Modern Japanese Culture

Japanese Studies B: Studies of Policy Diplomacy and International Relation in Japan

Japanese Studies C: Studies of Japanese Traditional Culture

Japanese Art Practice/ Japanese Painting and arts, Japanese traditional instruments

*3 : Fourteen professors have a special lecture in the point of the view of their major and Japanese culture and society.

*4 : Students must attend 2 classes at least from their majors' subjects in Faculty of Education and/or Faculty of Social and Information Studies.

⑤ Instruction System

(1) Coordinator: Mr. NODA, Takehito

(2) Supervisor: Students offer academic advice and individual guidance on the student's own research through seminar and lecture. Cooperated with related faculties, students organize a plan of their own research work.

In addition, teaching staff of the Faculty, Teaching staff of the Japanese language and Japanese Studies, and tutors cooperate the program and assist the students.

There is plan of events schedule as follows:

- Nov – Dec. Study of Japan (tea ceremony, flower arrangement, calligraphy)
- Feb. Ski Program in Kusatsu, Gunma
- Sept.'10 Excursion nearby Gunma
- Meeting with children at schools and introduce of your country at a school classroom

Special Lecture of Japanese Martial Art (武道)



⑥ Requirement of Completing the Course

Certificate is issued in the belonging Faculties after completing the planned class attendance and own specialized research.

⑦ Qualifications and Conditions of Applicants

(1) Applicants are expected to have the Japanese language ability to understand lectures and read materials. They are expected to have passed the Japanese Language Proficiency Test at Level 2 (Intermediate) or Level 1 (Advanced).

(2) Applicants are expected to have majors related to Japanese Language and/or Japanese Culture.

⑧ Credits

The students receive a academic certificate describing the subject's evaluation and credit when the Faculty approves their class attendance and examination's score meets the requirement. The students can submit the certificate to home institute for their credit transfer.

◇ Accommodation

The university makes reservation of a single room of International House of Gunma University, which locates in 4km far from the campus. If the rooms are full and/or the student prefer a room close to the campus, a reasonable private apartment near campus will be provided. It costs 30,000 yen per month. There is no Japanese Governmental student who used to live in the House.

As no room for family in the International House and a private apartment for family will be provided. It costs around 50,000 yen per month



Study of Japan, calligraphy (書道)

◇ Inquiries

International Exchange Office,
Gunma University

Address: 4-2 Aramaki-machi, Maebashi,
Gunma, 371-8510, JAPAN

TEL: +81-(0)27-220-7627

FAX: +81-(0)27-220-7630

E-MAIL: g-exchange@jimu.gunma-u.ac.jp

Academic Coordinator:

Mr. NODA, Takehito

Associate Professor

Center for International Education and Research

E-MAIL: nodat@gunma-u.ac.jp

URL: <http://www.gunma-u.ac.jp>

Saitama University (Saitama)



”Offering variety of course subjects and kind and benign course guidance and class instructions.”

1. University Overview

(1) Summary

Located in the Tokyo metropolitan area, Saitama University fulfills its mission as a medium-sized national university. The current academic term marks the 60th year since the university's founding in 1949 as a mother school for Urawa High School, Saitama Teachers College and other affiliated institutions under Japan's former educational system. The university is steadily expanding its facilities for education and research, as it continues to grow at the heart of the scientific exchange in the region. As host to over 490 international students during the prior fiscal year, the university also helps further stimulate international exchange. The number of researchers from other countries, as well as participation by the university's instructors in international research activities are also increasing. In addition to five faculties, Saitama University has established four master's programs to further promote advanced education and research, including master's programs and courses leading to a Ph.D., where candidates for advanced degrees can engage in advanced graduate school education and research. The university has also organized a post-doctorate program, through cooperation between the Graduate School of Science and Engineering and the independent Institute of Physical and Chemical Research, and is leading the way for other universities in developing new forms of graduate school education.

The university has also created the Center for International Exchange, to provide support for international exchanges in education and research. In addition to education, guidance and advice for international students, The center seeks to promote international discourse and international student exchange at Saitama University.

With the cooperation of the Office of International Exchange and assistance of each of the faculties, the center provides opportunities to international students with diverse cultural backgrounds to study Japanese, Japanese culture and Japanese Studies. The center has also begun special classes to help Japanese Studies Students heighten their understanding of Japan.

The Faculty of Liberal Arts, which includes diverse specialized fields in the humanities and social sciences, is characterized by an emphasis on interdisciplinary studies that probe and expand the boundaries between various fields of knowledge while simultaneously encouraging integrated research that is organically related to each field and providing the foundations for research in each respective field. The fundamental policy of the Faculty of Liberal Arts is to educate individuals who will be prepared with the education, flexible thinking and integrated decision-making capabilities suited to today's world, by balancing special expertise with a comprehensive, interdisciplinary outlook.

The Faculty of Education aims at fostering the individuals who will be responsible for the education leading to the next-generation society while being able to understand global developments. Students can learn the specialized education, theory and techniques needed to utilize superior educational practices as school educators and life-long learning instructors. Although “solving problems through education” may seem to be a roundabout method, it is the most certain, productive approach. Being involved in education is also one way to address the myriad issues confronting Japan and the world.

The Faculty of Economics consists of 3 departments: Economics, Business Administration and Social Environmental Design, which offer subjects of economics, business management and accounting, and law, politics and public policy, respectively. Our degrees are designed to equip students with the skills to identify, analyse and solve problems, in a unique learning environment with student diversity and low student-to-teacher ratio.

Characteristics of Saitama Prefecture (Saitama City)

With a population of about 7160 thousand, Saitama Prefecture is an inland prefecture located at the center of the Kanto Plain bordering Tokyo, which can be reached in one hour by Train. As a strategic transportation center for eastern Japan, Saitama Prefecture has experienced expansive progress as a prefecture supplying many of the key functions for Japan's capital.

The prefecture capital is Saitama City, located 30km north of Tokyo. With a population of, about 1210 thousand, Saitama has developed as an education and cultural city and is frequently noted as an urban residential center offering convenient, comfortable living, with a well maintained transportation system, a lush green environment and active promotion of sports activities.

- (2) International exchange program
International student registration: 493 (33 countries and regions)
Registered international researchers: 19
Japanese Studies Students: 4 (2009)
- (3) Other
Faculty of Liberal Arts, Faculty of Education,
Faculty of Economics, Faculty of Science,
Faculty of Engineering
Number of instructors: 473
Number of students: 8,810
(7,584 undergraduate, 1,226 graduate)
2. Name of the Course
Japanese Language and Culture Studies
3. Characteristics of the Course
- (1) Aims of the Course
This course seeks to help students clearly recognize differences between Japanese culture and cultures of other countries, increase mutual understanding and improve students' practical ability in applying their Japanese language skills.
- (2) Course Format
This course consists of lectures on course subjects designed for department students including international students. Under administration of the Faculty, Japanese Studies Students will be able to complete course subjects offered to the extent of their abilities, with the guidance of their supervisors.
- (3) Characteristics
Students can complete courses offered by other departments in specialized fields when such study is recognized as educationally beneficial. Students may also pursue original research activities in Japanese culture during their free time through the flexible curriculum system.

4. Course Contents

- (1) Students accepted About 10
(Students will be assigned to the Faculty of liberal Arts, Faculty of Education, Faculty of Economics or Center for International Exchange depending upon their desired fields of specialization.)
- (2) Course term
From October 1, 2010 to September 30, 2011
- (3) Courses
- a) Course subjects students can attend
- ① Japanese and Japanese Affairs subjects offered as General Education
- Japanese I (Reading Comprehension)
 - Japanese I (Listening Comprehension)
 - Japanese I (Writing)
 - Japanese II
 - Japanese Affairs A ("Japanese Society" by reading Data)
 - Japanese Affairs B (Japanese History)
 - Japanese Affairs C (Japanese Poetry)
 - Japanese Affairs D (Image of Japan: the Identity of the Nation Through Media)
 - Japanese Affairs E (Japanese View of the Japanese Language and the Linguistic Situation)
 - Japanese Affairs F (Japanese Literature)
 - Japanese Affairs G (Japanese and their Intercultural Experiences: How have they related to different cultures)

Not all of the above Japanese Affairs subjects are offered annually.

- ② Humanities, and Social Science Subjects as General Education
(Examples) Japanese History; Japanese Language; Japanese Literature; Culture and Education; Introduction to Modern Economics, Citizens and the Constitution)
- ③ Subjects offered by the Faculty of Liberal Arts, Faculty of Education, Faculty of Economics and Center for International Exchange Students

must attend at least 12 subjects mainly from the courses in ①, ② and ③ above.

b) Total course hours

Thirty hours each during the first and second semesters (Total of 60 hours for one year)
※ Each 90 minute class counted as Thirty hours each during the first and second semesters (Total of 60 hours for one year)

c) Guidance

Japanese Studies Students will be required to take a placement test administered by the university, and be advised based on that results. The students will complete courses offered at Saitama University under the guidance of their supervisors.

(4) Faculty advisor system (concerned professors)

- ① Responsible professors: Supervisors
- ② Cooperating professors: Professors in charge of international students in the faculties, professors in charge of Japanese and Japanese Affairs subjects, and professors in charge of subjects offered
- ③ Administration: Office of each faculty (Faculty of Liberal Arts, Education, & Economics), and Office of International Exchange

(5) Summary of tutorials, field trips, etc.

- ① Provided from time to time as decided by supervisors
- ② Japanese Studies Students are given priority to take part in field trips
- ③ Day trips and traditional Japanese arts appreciation events are conducted

(6) Course completion requirements, issue of Certificate of Completion and course credits

The university will award course credits for subjects attended when students have satisfied all course requirements, including number of classes attended and examination results. The university will also confer a Certificate of Completion to students who complete 12 or more subjects ①, ②, and ③ in (3) a) mentioned as above as a completion requirement.

(7) Other (Applicant qualifications and conditions)

Applicants who wish to attend courses must fulfill the following requirements.

① Japanese language proficiency

Applicants must be able to discuss and read and write about general topics, and must be able to comprehend the content of the courses in which they will major while listening to class subject material in Japanese.

Applicants preferably will have passed at least the 2nd level of Japanese Language Proficiency Test conducted by the Japan Educational Exchanges and Services.

② Individuals who will major in Japanese Studies, or individuals who will study in fields related to Japanese Studies while pursuing a major in another field.

5. Accommodations

Saitama University's International House includes 98 rooms for single students, 55 rooms for married couples and 19 rooms for families, and can accommodate about 170 individuals.

Japanese Studies Students are given priority to live at International House.

Inquiries

Department: Center for International Exchange,
Saitama University

Address: 255 Shimo-Okubo, Sakura-ku,
Saitama City, Saitama 338-8570, Japan

Tel.: +81-48-858-3028 (Direct)

Fax: +81-48-858-9675

E-mail: ryugaku@mail.saitama-u.ac.jp

Center URL: <http://www.isc.saitama-u.ac.jp>

University URL: <http://www.saitama-u.ac.jp>



- We have a variety of courses designed for both Japanese and international students.
- You will be able broaden your view of Japan through field trips, visiting museums and schools as well as other forms of cultural exchange.
- You will acquire basic research skills through work towards your final essay.

◇ University introduction

Chiba University, one of the largest and most vibrant national universities in Japan, was founded in 1949.

At present, Chiba University comprises nine faculties and schools (the Faculties of Letters, Education, Law and Economics, Science, Engineering, Pharmaceutical Science, and Horticulture, and the Schools of Medicine and Nursing), and eight graduate schools (Humanities and Social Science, Education, Science, Engineering, Horticulture, Advanced Integration Science, Nursing, Medical and Pharmaceutical Sciences, Medicine, and Pharmaceutical Sciences). Other facilities include the Center for International Research and Education, University Library, Safety and Health Organization and University Hospital.

Chiba University boasts a distinguished general education program for undergraduates, and graduating students high rates of success in qualification examinations to become teachers, doctors, pharmacists and attorneys.

At present there are 9,825 students in the undergraduate program, 2,950 students in Master and Doctoral Programs, and 1,216 faculty members. As of November 2009, there are 1073 international students from 56 countries, and seven students are enrolled as students of the Japanese Studies Program, four of whom were recommended by Japanese embassies.

Students in the Japanese Studies Program will be on the main campus (Nishi Chiba) in Chiba City, which has a population of about 950,000. The campus can be reached by train in one hour from Tokyo, and is about 45 minutes by car from Narita International Airport. It is a pleasant campus with abundant greenery. Chiba Prefecture is surrounded by rivers and the sea, and has mild climate throughout the year. Please refer to the following URL for information about the environs:

<http://www.pref.chiba.lg.jp/english/index.html>

◇ Course summary

1. Aims and features of the course

(1) Aims

To attain a high level of competence in Japanese, particularly for academic purposes; to acquire specialized knowledge about Japan; to master basic research skills in order to pursue future studies; and to deepen understanding of Japan through field trips and activities with Japanese students and the local community.

(2) Features

Students take Japanese language courses appropriate for their level, attaining an overall improvement in their language abilities.

They will take a variety of classes in Japanese language and culture designed to promote interaction between Japanese and international students and creating a unique international study environment.

They will also be able to select from the great variety of specialized lectures and seminars offered at the Faculty of Letters, Faculty of Education, Faculty of Law and Economics as well as other faculties depending on their Japanese language ability and fields of interest.

Through courses and field trips they will gain first-hand knowledge of communities in Chiba Prefecture. By learning about the local culture and history through visiting museums and other public institutions, e.g. schools, they will gain many opportunities for actual cultural exchange.

At the same time students will also pursue research projects in their specialized fields and submit a final essay in Japanese language.

(3) Exchanges

Students will have tutors with whom they may carry on one-on-one communication throughout the program.

There are also home visit, home stay and cultural programs.

Students will be encouraged to participate in the activities conducted by Chiba University International Student Group (CISG) such as chat rooms or Universal Festivals.

2. Structure of the course

(1) Students number limit: eight

(2) Course Period: one year (From October 1, 2010 to September 30, 2011)

Autumn semester: October 1, 2010-mid-February, 2011

Spring semester: early April 2011-early August, 2011

(3) Composition of the course

There will be no classes solely for *Nikkensei*, but they will attend independent guidance sessions.

3. Study of Japanese language, culture and society

(1) Overview of courses

Students select courses from categories 1) to 3) listed below on the basis of their major field of study and Japanese language ability.

Numbers in square brackets [] show the number of class meetings per week (90 minutes per meeting). Courses that are numbered I/II or 1/2 are held in separate semesters.

Subjects marked with © are compulsory.

1) Japanese courses

Students will take Japanese classes according to their level of proficiency. There are six levels at intermediate level or higher, but *Nikkensei* will typically take three or four courses at one of the following four levels:

Japanese 2 Upper Intermediate	<i>Integrated Course</i> [2] <i>Reading Comprehension</i> [1] <i>Oral Expression</i> [1] <i>Composition</i> [1] <i>Kanji</i> [Intensive: Autumn only] *
Japanese 2 Upper Intermediate 2	<i>Integrated Course</i> [2] <i>Oral Expression</i> [1] <i>Composition</i> [1]

* Japanese 2 Kanji class is an elective course.

Japanese 3 Pre-Advanced	<i>Written Expression</i> [1] <i>Reading Comprehension</i> [1] <i>Oral Expression</i> [1] <i>Advanced Japanese Grammar</i> [1]
Japanese 4 Advanced	<i>Integrated Course</i> [2] <i>Oral Expression</i> [1] <i>Composition</i> [1]

2) Japanese Studies: Humanities

A. General Education Subjects

Japanese Traditional Culture: The Spirit of Japan [1]

We will focus on Japanese culture, society and religion, with frequent discussions.

Contemporary Japanese Lifestyles [1]

We will focus on customs seen in Japanese society, and use them as a basis to try to understand the psychology of the Japanese people.

Postwar Japanese Diet I/II [1]

We will survey the culture of food in Japan, focusing on foods and cuisines that have appeared in the post-war era, and investigate the cultural and social background behind everyday foods.

Images of Japan [1]

We will discuss what sort of images Japanese and international students have of Japan, based on a variety of subjects and points of view, acquiring a more objective perspective. We will also deepen our understanding with considerations of the images the Japanese have of other countries.

Selected Aspects of the Japanese Language 1 [1]

We will overview Japanese phonology and grammar and examine those characteristics that can cause errors for non-native speakers.

Japanese Grammar [1]

We will learn about word inflection and grammatical categories in Japanese.

The Japanese Language in Its Diversity [1]

We will view Japanese from various angles in its spatial extent and chronological depth, and examine its relationship to neighboring Asian languages.

◎*Seminar on Cultural Diversity in Japan* [1]

We will consider how we interact with other members of our community, who have a variety of cultural backgrounds. Discussion and activities in and out of class will lead to a re-examination of the culture and history of Chiba as a multicultural and multilingual community.

◎ *Research Work (Humanities) I/II* [1]

This course is for students in the Japanese Studies Program to write their final report.

Research work III/IV

This course will focus on how to gain the most when visiting Japanese history and folklore museums. In their coursework students will design museum exhibition guide in the Japanese Language, which they will later translate into their own languages.

B. Specialized courses at the Faculties

The following courses particularly welcome students from this program. These courses have been designed specifically for international students, or designed with them in mind, except for the ones marked with a * which are intended for general students.

Faculty of Letters:

Introduction to Japan Studies A/B [1], *Learning about Japan* A [1], *Intercultural Contacts* A* [1]

Faculty of Education:

Seminar on International Education I/II [1], *Education Affairs in Japan* I/II [1], *Reading Articles on Education* I/II [1], *Information Education in Japan* [1]

Faculty of Engineering:

*History of Japanese Architecture**

3) Japanese Studies: Social Sciences

A. General Education Subjects

Japan Seen through Current Events I/II

Each week we will discuss an article appearing in a newspaper or weekly magazine, explaining how it relates to everyday life.

B. Specialized courses at the Faculties

Faculty of Education:

*Japanese Politics** [1]

Faculty of Law and Economics:

*Japanese Economy** [1], *Asian Economy** [2], *Social and Economic History of Japan** [2], *History of Japanese Law** [2]

Note: Students must have some background knowledge of Japanese history to take History of Japanese Law and Social and Economic History of Japan.

Details on courses in 2) and 3) may be found at the following web page:

<http://www.chiba-u.ac.jp/student/syllabus/>

(2) Research paper

Students are required to write a research paper (at least 6,000 characters). They will receive advice from their academic supervisors as well as advice and instruction from the instructors in the Center for International Research and Education teaching Research Work courses (their specialties are Japanese Linguistics, Japanese Folklore Studies, Japanese History, Intercultural Psychology and Japanese Language Teaching). Students will also receive Japanese language help from their tutors.

In July there is a session at which students present their research papers, which will then be collected and published.

Examples of previous research paper topics:

- History and social role of the Sanja Festival.
- Analysis of the relation between attractions and shops at Tokyo Disney Sea.
- Immigrant working women: Image and reality of foreign women working in Japan.
- Usage of the word “*yatsu*”: Based on Shōwa-era novels
- Linguistic behavior towards differing opinions: Based on conversational data by women university students.

4. Advice and counselling

The following teachers at the Center for International Research and Education will provide both academic and personal advice. They will also conduct guidance and homeroom regularly.

Aya Yoshino (Japanese language education, applied linguistics);

Kanako Nishizumi (Japanese language education, pragmatics).

All students will be allocated to faculties (Letters, Education, Law and Economics) on the basis of the academic field they specify. They will be given an academic supervisor from the relevant faculty, who will provide them academic advice in cooperation with the program coordinator.

5. Excursions and Exchange Activities

To provide opportunities for interaction and friendship with people from the University and the community, Chiba University offers home visit and home stay programs for international students. Students may also participate programs sponsored by the University for introducing aspects of Japanese culture, and go to a Kabuki performance.

Oct. Welcome Party

Nov.- Jan. Programs to Introduce to Japanese Culture (putting on *yukata*, explanation of wedding costume, *origami*, tea ceremony, calligraphy)

Nov. Field trip (*Bōsō* village, *Sawara*, *Naritasan* Temple)

Dec. Home visits

Bunraku demonstration and performance

Jan. Home stay (overnight)

Jun. Kabuki demonstration and performance

Students also have the chance to introduce their own countries' culture at the University's Universal Festival, and meet students at elementary schools to learn about each other's culture.

6. Requirements and Certificate of Completion

Chiba University issues a Certificate of Completion to those who successfully complete more than twelve courses (eighteen credits) and write a research report.

7. Awarding of credits

Students will be given a certificate showing their acquisition of credit for classes in which they have enrolled and performed satisfactorily.

8. Qualifications and Conditions of Applicants

Students must fulfill all the following requirements:

1) Japanese Language Ability

Applicants should have attained ability in Japanese equivalent to Level 2 or higher of the Japanese Language Proficiency Test:

- mastery of sentence patterns and expressions in intermediate or advanced Japanese
- routine conversation skills in Japanese
- understanding of basic lectures and seminars in Japanese designed for international students
- reading knowledge of approximately 1000 kanji
- ability to read texts of general interest with dictionaries
- knowledge of basic vocabulary in their major fields of study
- ability to write a short composition (explanatory text or opinion on general topics) of about 1000 characters.

2) Japanese Language Study and Major Field of Study

- At least two years' study of Japanese is essential.
- At the time of application and arrival in Japan, applicants must be enrolled as undergraduate students in faculties of schools which offer majors in Japanese language or Japanese culture.

·Applicants should have an academic research interest in a field of Japanese studies, and have the intention to continue such research after returning to their home country.

·Priority will be given to students who will be studying in Japan for the first time.

◇Accommodation

Single rooms at Chiba University International House will be provided for the students in this course. The dormitory fee is ¥19,000 per month, inclusive of common expenses and internet access fees, but excluding electricity, heating, water and sewage charges. In the past three years all *nikkensei* students were given accommodation in the International House. The International House is in Inage, one train station west of Nishi Chiba campus or a short distance by bicycle.

◇Chiba University address

Office

Head of International Student Division, at the Department of Student affairs Address: 1-33, Yayoi-cho, Inage-ku, Chiba-shi, Chiba 263-8522, Japan

Tel: 81-43-290-2193 Fax: 81-43-290-2198

E-mail: dgd2197@office.chiba-u.jp

<http://www.chiba-u.ac.jp/>

You may contact the following contact person about the contents of the course.

YOSHINO Aya (Center for International Research and Education):ayoshino@faculty.chiba-u.jp

Tokyo University of Foreign Studies (Tokyo)



Multi-lingual and Multi-cultural Campus & Japanese Language Education

◇ University Introduction

I. Features and Overview

1) History and Identity

As an institution specializing in international relations, world languages, culture, and society, Tokyo University of Foreign Studies is firmly established as a unique university among many other universities in Japan.

The Faculty of Foreign Studies, the Graduate School of Global Studies (Master's and Doctoral Programs), the Japanese Language Center for International Students, and the Research Institute for Languages and Cultures of Asia and Africa (ILCAA), work hand in hand to realize a vast area of research specialization from a variety of fields including linguistics, languages, literature, history, philosophy, cultural anthropology, sociology, politics, and economics covering most part of the world, such as Asia, Africa, Europe, North and South America, and Oceania.

To understand where TUFS is heading for, it would be helpful to shed light on the University's origin. Tokyo School of Foreign Studies (established in 1899) is the University's direct predecessor. As a school of excellence, it had contributed in the training of many professionals who played an active role abroad and at the same time were the key players in the development of cross-cultural exchange and foreign language education in the country. The university can even trace back its roots to the Ansei Era's "Banshochosho" or the branch of the government during the Edo period, which dealt with Western learning and translation of diplomatic documents.

Undergoing new developments after the World War II, the university's main goal has been to deepen understanding of foreign cultures, to offer high level of training for international activities, and to teach both theory and practical researches based on specialized knowledge of foreign languages and cultures. Living up to its main educational philosophy, Tokyo University of Foreign Studies continues to produce highly qualified graduates with the ability and skills necessary to be at the frontline activities of the global community.

2) Number of Faculty Members and Students (As of May 1, 2009)

- Students	
Faculty of Foreign Studies	3753
Master's Program	337
Doctoral Program	215
- Faculty Members	248

II. International Exchange Accomplishment

TUFS sends its students to universities and institutions located all over the world, and also actively receive international students.

• Students Admission to Japanese Studies Students Program

In 1980, TUFS became the first university in Japan to admit students to Japanese Studies Students Program. The number of students admitted was 18 in 2007, 24 in 2008 and 24 in 2009.

• Number of foreign undergraduate and graduate students

496 foreign students from 57 countries and regions

• The number of students studying primarily at Japanese Language Center

83 students from 31 countries and regions

• Present exchange programs

66 universities and institutions from 34 countries and regions
(as of May 1, 2009)

◇ Outline of the Japanese Studies Students Program

The course is characterized by intensive learning of the Japanese language and Japanese education in a multilingual and multicultural environment. Students take courses based on their specialization and level of proficiency in Japanese.

1) Number of Students Accepted

24 students

2) Course period

October 2010 – September 2011

3) Course format

TUFS Japanese Language Program (8 levels overall, more than 40 courses) offers up to 8 courses of Japanese language per week to foreign students according to their Japanese level. Besides, Intensive Japanese language students take a special course (Specialized Course for Intensive Japanese language students). In addition, depending on Japanese language level, students are required to write an essay about their one-year experience or write a paper on their research and make a presentation. Furthermore, students with an excellent command of Japanese can attend undergraduate level classes.

4) Outline of Classes/Subjects

Classes will be held for 15 weeks during each of the Fall and Spring semester.

a) Mandatory subjects

Comprehensive Japanese: For students with Japanese level 400 to 700 (Number of classes per week ranges from 2 to 5 depending on the Japanese level of the student)

The following three subjects are mandatory in the specialized Course

- Japanese/ Japanese Culture
- Japanese and Japanese Language Education (serial lecture)
- Comparative Culture (serial lecture)

b) Lectures

Japanese history and society, Japanese society and culture, Language and culture of Japan, Language and society of Japan, Special lecture on Japanese social culture, Special lecture on modern culture, Multilingual society and culture, Special lecture on Japanese language and Japanese culture, and others.

c) Field trip

Field trips to various places will be organized.

d) Optional subjects

Specialized Course in Japanese: Japanese subjects other than the mandatory Comprehensive Japanese.

In addition to the 3 Mandatory subjects, students must take 1 to 3 subjects from the Japanese Studies special subjects.

5)Leadership

a) Technical Program Committee Members
NAKAMURA Akira, Associate Professor
with 3 other committee members

b) Advisory System

Students will receive individual supervising from their Course Advisors and Subject Advisors for the course-completion report. Tutor system is also available.

6)Events

December Japan Culture Exchange Event
(Experience Igo/Sho-gi, Ikebana, Kimono, Sado etc.)
February Field trip
(Past trips: Visit Ghibli Museum, Edo Kiriko (glass-cutting) experience)
July Oral presentation

7)Requirement for course completion and issuance of completion certificate

In addition to completing all their course requirements, students must write a course-completion report or essay (end-term report), and make an oral presentation of its content. Students who have completed all of these requirements will receive a course completion certificate.

8)Unit certification and unit transferability

Unit certification and transfers are determined by the university which the students are enrolled in their home countries.

9)Qualification and condition for the participants

-Those who have sufficient proficiency in Japanese language to study and do research.
- Students who have the desire and ability to write an original paper about Japan, and the Japanese language or Japanese culture by the end of their one year training at TUFS.

[Number of class subjects and class hours] Japanese

Class Subjects			hours			
			Fall Semester	Spring Semester	Total	
Japanese Language Program	Intermediate Japanese 400	Intermediate Comprehensive Japanese	150	150	300	
		Skill-specific Japanese	Grammar	30	30	60
			Reading	30	30	60
			Listening	30	30	60
			Writing	30	30	60
	Oral	30	30	60		
	Upper Intermediate Japanese 500	Upper Intermediate Comprehensive Japanese	150	150	300	
		Skill-specific Japanese	Grammar	30	30	60
			Reading	30	30	60
			Listening	30	30	60
			Writing	30	30	60
	Oral	30	30	60		
	Advanced 1 Japanese 600	Advanced 1 Comprehensive Japanese	150	150	300	
		Skill-specific Japanese	Grammar	30	30	60
			Reading	30	30	60
			Listening	30	30	60
Writing			30	30	60	
Oral	30	30	60			
Advanced 2 Japanese 700	Advanced 2 Comprehensive Japanese	60	60	120		
	Skill-specific Japanese	Grammar	30	30	60	
		Reading	30	30	60	
		Listening	30	30	60	
		Writing	30	30	60	
Oral	30	30	60			
Highly Advanced Japanese 800	Skill-specific Japanese	Current events	30	30	60	
		Reading	30	30	60	
		Drama	30	30	60	
		Writing	30	30	60	
		Current events	30	30	60	
Highly Advanced Japanese 800	Skill-specific Japanese	Literature	30	30	60	
		Business	30	30	60	
		Business	30	30	60	

◇Dormitories

Although the university has International Halls for international students on campus, it does not necessarily mean that everyone can be housed there. On the occasion that students cannot get accommodation, the Japan Student Service Organization (JASSO) can introduce them to other alternative accommodation.

Accommodation history

As of October 2009

International Halls at TUFs 19

International Halls off campus (JASSO) 4

Private apartment 1

As of October 2008

International Halls at TUFs 19

International Halls off campus (JASSO) 5

As of October 2007

International Halls at TUFs 12

International Halls off campus (JASSO) 7

◇For inquiries contact:

Student Exchange Division

Tokyo University of Foreign Studies

Asahi-cho 3-11-1 Fuchu-shi Tokyo, 183-8534

Tel: +81-42-330-5184

Fax: +81-42-330-5189

E-mail: ryugakuseika@tufs.ac.jp

Tokyo University of Foreign Studies Homepage

<http://www.tufs.ac.jp>

Japanese Language Center for International Students

Homepage

<http://www.tufs.ac.jp/common/jlc>



2008 Japanese Studies students



Presentation



Japanese cultural experience

Tokyo Gakugei University (Tokyo)



Tokyo Gakugei University (TGU) has various departments ranging from education, humanities, social science, natural science to other specialties such as music, fine arts, and physical education. Japanese Studies Students (Nikkensei) will be able to take regular classes of these disciplines in addition to courses specifically designed for international students. TGU also provides a number of opportunities for international students to participate in exchange activities at affiliated schools and many other cultural events. Nikkensei will be able to create their study plan combining different types of lectures and off-campus activities.

◇ University Overview

(1) Characteristics and History

Tokyo Gakugei University in its current form was established in 1949, unifying four normal schools that existed since the beginning of Meiji Period. It has produced a number of excellent professional educators for schools all over Japan and established its reputation as a leading teacher-training institution. It started its graduate school of education (Master's Course) in 1966 for the purpose of conducting advanced research and further training teachers with advanced skills and knowledge in humanities, social and natural sciences, physical and art education. In 1988, in addition to the teacher training course, a new Liberal Art Course was added in an attempt to meet the needs of a wider range of students who wish to contribute to society outside the field of education. In 1996, the United Graduate School of Education (Doctoral Course) was started to produce researchers on school education. International Student Exchange Center was established in 1998 to offer Japanese language and culture/society education including preparatory language program, guidance on both daily and academic life in Japan, as well as Japan Studies Program and Teacher Training program.

(2) Faculty, Number of Teaching Staff and Students Enrolled (as of May 1, 2009):

Faculty: Faculty of Education

Number of Full-time Teaching Staff: 341

Number of Students Enrolled: 5,954 (5,070 undergraduates, 884 graduates)

(3) International Exchanges (as of May 1, 2009):

Number of Institutions with exchange agreement: 50

Number of International Students: 363 (including 14 Japanese Studies Students)

Number of regular students studying at sister universities abroad: 22

◇ Introduction of the Program

● Aims

To improve Japanese language ability and deepen understanding of Japanese culture and society through each student's specialized field.

● Contents

1. Japanese Language
2. Japanese culture/society
3. Specialized Subject
4. Individual Study
5. Cultural Exchange

● Number of Students to be Accepted:

About 25

● Period

From October 1, 2010 to September 30, 2011

1st Semester October 1 - March 31

2nd Semester April 1 - September 30



● Outline of the Program

(1) Japanese Language

To improve Japanese language ability, students are expected to attend Japanese language classes.

(2) Japanese culture/society

For deeper understanding of Japan, students must complete a certain number of courses titled "Japanese Culture and Society" and other courses conducted primarily in Japanese.

(3) Specialized Subject

Students with highly advanced Japanese language skills are allowed to take university's regular undergraduate classes of which contents are focused on Japanese cultural and social matters.

(4) Individual Research paper

By the time of completing the program, the students write a report of their individual study at TGU with the guidance of their academic adviser.

(5) Cultural Exchange

Students are expected to participate in various cultural exchange activities at TGU and events of local communities. For the purpose, TGU organizes many events, such as cultural exchange programs at affiliated primary schools of TGU and workshops of traditional performing arts of Japan.

● Staff Members

(1) Coordinators

Hideaki SHIBUYA Director, International Student Exchange Center

Megumi SHIMADA Associate Professor, International Student Exchange Center

(2) Number of Cooperative professors: 6

(3) Academic Adviser

Selected among from the professors of TGU according to each students' major

(4) Administrative staff for the program: International Affairs Office

● Certificate of Completion and Academic Records

* When completing all requirements for the program is approved, students will receive a certificate of the program completion signed by the university president.

* The students can receive the records of subject studied in the program.

● Qualifications of applicants

The applicants are expected to be capable of passing Japanese Language Proficiency Test, Level 2 or higher.

● Course Credit Compatibility

TGU does not provide credit transfer. But, for those classes completed in the course period, TGU may issue certificates that shows the subjects, attended hours and marks of the classes.

● Accommodations:

1) International House (42 single rooms)

2) Higashi-Kurume International Student Dormitory (45 single rooms)

3) Hitotsubashi University International Student House for 4 national universities in western Tokyo (68 single rooms)

● Surroundings of the University

Koganei-shi was founded in 1958 as the tenth city in Tokyo.

The city is located at 25 kilometers' distance from the center of Tokyo with a population of 100,000.

Koganei-shi is a beautiful, comfortable city to live in.

[CONTACT OFFICE]

International Students Unit

ADDRESS:

International Affairs Office,

Tokyo Gakugei University

4-1-1 Nukuikita-machi, Koganei-shi, Tokyo

184-8501 JAPAN

PHONE: +81-42-329-7763

FAX: +81-42-329-7765

E-mail: ryuugaku@u-gakugei.ac.jp

HOME PAGE ADDRESS:

http://www.u-gakugei.ac.jp/~gisec/#SlideFrame_1



Visit to Edo Tokyo Architecture Museum



Meeting Japanese children at an affiliated primary school

Ochanomizu University (Tokyo)



One notable attribute of our program is small intimate classes where foreign students can effectively learn the Japanese language and culture in a family-like environment. We offer various exchange programs with Japanese students as extracurricular activities.

◇Introduction of Ochanomizu University

① Outline of Ochanomizu University

1) Characteristics and History

Ochanomizu University, founded as Tokyo Women's Normal School in Ochanomizu (now referred to as Yushima, Bunkyo-ku), has graduated more than 22,000 female leaders into virtually every field in society for nearly 136 years. Notable among them were excellent scholars, especially those with achievements in natural science studies, and brilliant educational experts. Since the inception in 1875, the university has led the way in women's education as the first-ever national institution of higher education for women.

The mission of Ochanomizu University is to educate women able to contribute significantly to society's greater good by disseminating knowledge, organizing in-depth research and educational activities and raising students' academic and ethical standards with practical sense, and thus, to produce a highly developed culture. Under the educational system reform in 1949, the institution became a comprehensive university with three faculties. Since then, the university has been continually growing and expanding. To be ever receptive to the constantly shifting currents of the times, the university has been vitalizing research and teaching for undergraduates, as well as the development of the graduate program and the introduction of new on-campus facilities for collaborative research. The fact that the university is comparatively a small institution as a university with multifaceted academic programs ensures individually-tailored instruction with detailed assistance for each student.

This makes academic experience at Ochanomizu University something valuable and special; learning in small classes helps students mature as fully independent, self-reliant women. This small university has attracted students across the nation and around the world.

More than 200 international students study at the university today.

2) Number of Students and Others (as of May 1, 2009)

- Faculties: Faculty of Letters and Education
Faculty of Science
Faculty of Human Life and
Environmental Sciences

- Graduate Course: Graduate School of Humanities
and Sciences

- Number of Faculty Members: 245

- Number of Students:
Undergraduate: 2,166
Postgraduate : 1,072

3) Characteristic of Tokyo (Bunkyo Ward "Bunkyo-ku")

Bunkyo-ku is located in approximately the middle of all the 23 wards of Tokyo.

It is known for having many historical sites, places of interests, traditional universities and schools. Bunkyo-ku also offers one of the most comfortable living environment with the beauty of nature and the calm atmosphere.

② Actual Achievements for International Exchange

As of May 1, 2009, 241 foreign students are studying at Ochanomizu University. 11 of them are enrolled as Japanese Language-Japanese Literature and Culture Students.

◇Outline of the program

1. Name of the Program
Japanese Studies Program

2. Uniqueness of the Program

Since Ochanomizu University is a small-sized university, we can provide the students a familiar and comfortable atmosphere for studying Japanese language and culture. In addition, communication opportunity with Japanese local students is well prepared outside the class.

3. Contents of the Program

① Number of students to be accepted
Students nominated by a Japanese Embassy: 8
※We might accept more in some situations.
Students nominated by Ochanomizu University: 8

② Period of the Program
From October 1, 2010 to September 30, 2011

③ Outline of the Program

We offer Japanese Studies Students a special orientation, special class once a week and regular meeting with their academic advisers. To encourage communication with Japanese students we do not have a separate course only for foreign students categorized as "Japanese Studies Students (*Nikkensei*)" besides that. They will attend the basic classes for Japanese students and the classes designed for regular foreign students enrolled at the university, and will be encouraged to attend the regular lectures offered to Japanese students if they want.

1) Special Subjects for Foreign Students

• Japanese Language (intermediate course):

I A, I B, II A, II B, III A, III B

• Japanese Language (advanced course): IV A, IV B, V A, V B (They can learn the overall ability of Japanese language)

• Japanese Culture: I A ~ V B (They can learn the history, society and culture of Japan and write some reports.)

The students are required to take at least four subjects among these subjects.

Once a week a class for *Nikkensei* is held. There they learn basic academic skills.

2) Specialized Subjects

As a general rule, *Nikkensei* take classes of Japanese Languages and Culture in the first semester (from October to March), and they take classes of their own majors in the second semester (from April to September).

3) The Final Paper

The students have to submit a final paper at the end of the second semester to demonstrate the mastery of the program.

Academic advisers should individually supervise each student.

④ Academic Advisers

YASUKO SASAKI : Professor,
International Exchange
and Education Center

TOMIYO KAGAMI: Professor,
International Exchange
and Education Center

SHIN MORIYAMA: Associate Professor,
International Exchange
and Education Center

All of them individually help the students to study this program.

⑤ Trips and Events

Sightseeing Trips, KABUKI watching class (a traditional form of Japanese theater) and SHODO class (the art of drawing Japanese characters with a brush and India ink) are organized for the students.

⑥ Issue of Certification

The students who complete this yearly program can obtain a certificate.

⑦ Credit Certification

Subjects of this program can be certified as credits according to the evaluations of exams (including essays, theses, etc)

⑧ Qualification for the Program

No qualification is required.

◇ Housing

We have the Ochanomizu University International House in Itabashi-ku, Tokyo.

Construction: reinforced concrete, five stories (private rooms)

Meals: not provided

Rent: 4,700 yen per month and public utility charges are generally 9,000 yen

Japanese undergraduate students and foreign students can live here.

If you have any questions, please contact:

International Affairs Team

Ochanomizu University

Phone +81 3 5978 5143

Fax +81 3 5978 5951

e-mail ryu@cc.ocha.ac.jp

website <http://www.ocha.ac.jp/intl/index.html>

Hitotsubashi University (Tokyo)



Features of the Program

- 1) Participants will learn advanced Japanese with textbooks originally developed for academic reading, and have opportunities to join seminars offered by the faculties.
- 2) Participants will be invited to join various cultural events organized by local groups as well as to take internship opportunities offered through the University Alumni.

◇ Overview of the University

1) The Feature and History

Hitotsubashi University is the oldest university for Social Sciences in Japan, and over 130 years, it has provided Japanese industry with qualified graduates who have developed into distinguished leaders and accomplished professionals in a variety of fields. The University was the first university in Japan to introduce the seminar system to university education. The campus is situated in a forest-like setting with Romanesque architecture inspiring an academic atmosphere.

2) International Exchange (as of May 1, 2009)

Number of International Students: 606 (from 52 countries)
Number of the participants of the Program : 10

3) Number of Students (as of May 1, 2009)

<Undergraduate>	
Commerce and Management	1,294
Economics	1,229
Law	797
<u>Social Sciences</u>	<u>1,061</u>
(Total)	4,381
<Graduate>	
Commerce and Management	278
Economics	271
Law	321
Social Sciences	473
Language and Society	255
International Corporate Strategy	330
<u>International and Public Policy</u>	<u>132</u>
(Total)	2,060

4) Other Information

Kunitachi is a beautiful city modeled on the academic cities of Europe, and is also home to many schools aside from Hitotsubashi University.

◇ Outline of the Program

1) Enrollment quota: 10

2) Period of the Program:

From October 1, 2010 to September 30, 2011

3) Courses and classes

The Program consists of the following main components:

- (1) Nihongo-Nihonbunka Kenshusei Seminar* (required)
- (2) Japanese language classes** (elective)
- (3) Liberal Arts/ Undergraduate Courses and classes** (elective)
- (4) Undergraduate Student Seminar in a selected field** (optional)

* A course specifically offered to Program participants.
**Courses and classes in that Program participants will be taking with other students of the University.

There will be a 3 week intensive Japanese course offered in September.

4) Teaching and Supporting Staff

The teachers of Japanese as a second language at the Center for Student Exchange will be in charge of providing the Program participants with well-organized instructions, while the Advising and Counseling specialists at the Center will support them in more general aspects of their life in Hitotsubashi. Specialists in various fields of social sciences at the University will also assist the students while they are participating in one of a wide range of seminars for undergraduate students.

- (1)The Director of the Center for Student Exchange is in charge of the Program.
- (2)All the teaching staff of the Center are responsible for the teaching of Program participants.

5) Requirements for course completion and graduation certificate

Program Participants who have completed the Program by passing the exam of all the required courses and classes will obtain the Certificate. At the end of the exchange program, grades and other study records will be reported to the home university.

6) Credit recognition and exchange

In the case of liberal arts and undergraduate classes, credits will be recognized if the pass requirements are satisfied. Documents necessary for accreditation to the home university will be provided on demand.

7) Other/Qualifications and Conditions of Applicants

We accept only 3rd - and 4th- year students of double majors in Social Science and Japanese language. Applicants must have ability of Japanese language at an advanced level.

For international students who are equipped with basic knowledge in social sciences will find the program useful in helping they acquire a wide range of knowledge in such fields as well as in learning the Japanese language and Japanese culture.

8) Dormitories

Program participants are given first preference in entering the International House located on the campus.

Table1. Courses offered to the Program participants
(All classes are 2 credited, *required)

Class Category	Examples of Classes
Classes in general Japanese	Elective Japanese: Fast Reading, Elective Japanese: Advanced Reading1, 2, Elective Japanese: Speaking 3
Classes in academic Japanese	Reading for Special Purposes, Japanese for Economics, Elective Japanese: Reading in Early Modern Japanese
Classes in Japanese studies	Japanese Affairs
Classes for inter-culture understanding	Seminar in Inter-cultural Experience
Liberal arts classes	Language and Culture of Japan, Modern Japanese
Classes for undergraduate students	Japanese Language and Culture, Social History of Japan
Seminars	*Nihongo-nihonbunka Kenshusei Seminar, Undergraduate Seminar

Table2. Example of study schedule
(Students are expected to join 8 courses a semester)

	8:50-10:20	10:35-12:05	12:55-14:25	14:40-16:10	16:25-17:55
Mon	*Nihongo-Nihonbunka Kenshusei Seminar		Japanese Affairs 1		Undergraduate Seminar
Tue		Reading for Special Purposes			
Wed		Elective Japanese: Advanced writing 3	Elective Japanese: Speaking 3	Elective Japanese: Fast Reading	
Thu			Seminar in Inter-cultural Experience		
Fri					

9) Other Activities

- (1) Students may choose a host family from Kunitachi City and meet with them a few time a month.
- (2) Students may participate in Japanese cultural experience classes such as tea ceremony and flower arrangement.
- (3) There are many opportunities for excursions to study Japanese culture and history.
- (4) Students may participate in a week long internship during the summer holidays. (In 2009, 4 students were placed in 4 different workplaces.)

◇Contact

Student Exchange Division, Hitotsubashi University
 Address : 2-1 Naka Kunitachi, Tokyo 186-8601 JAPAN
 TEL +81-42-580-8164
 FAX +81-42-580-8167
 E-mail g-rkoryu@ad.hit-u.ac.jp
 Homepage: <http://www.hit-u.ac.jp/index-e.html>

Sophia University (Tokyo)



1. Small-Class Size from Basic to Advanced Levels
2. Semester System
3. Courses Offered in English (except Japanese Language and Pedagogy Courses)

An Overview of the University:

Since its foundation in 1913, Sophia University has been preparing generations of students to play an active role in Japanese society and in the world.

More than fifty nationalities are represented in our student body of 11,929, and the tenured faculty of 495 is made up of scholars from 20 countries.

Sophia University offers a choice of 8 faculties and 27 departments, and a graduate school with 10 divisions and 23 programs. Most of the courses except the courses offered at the Faculty of Liberal Arts are offered in Japanese. At present 881 students from all over the world are studying at Sophia University and approximately 200 Sophia students go abroad to study every year.

Sophia University is located in the center of Tokyo, one of the most vibrant cities in the world.

Course Features:

1. Number of Students Accepted: a limited number
 2. Period of Study at Sophia: September–July
Guidance: mid–September
Classes (Autumn Semester 2010): October–January
Classes (Spring Semester 2011): April–July
- The Japanese Language Program of the Department

of Liberal Arts offers courses in Japanese language and certificates in Japanese Studies and Japanese Language Pedagogy. Courses offered include the following.

1. Japanese Language Courses

(1) Regular Track:

- Basic Japanese: Japanese 1, M1, 2, M2

Fundamental skills of speaking, listening, reading, and writing 400 cumulative kanji.

- Intermediate Japanese: Japanese 3, 4

Grammar and 800 cumulative kanji for production and recognition

- Advanced Japanese : Advanced Japanese 1, 2, 3

Newspaper articles, literary works, and academic writings

(2) Intensive Track:

- Intensive Japanese:

Three levels covering the second half of the introductory level and the intermediate level.

(3) Native Speaker's track:

- Japanese for Reading and Writing:

For students who possess native fluency in the spoken language. 500 kanji introduced in each semester in each course .

- Classical Japanese 1, 2:

Classical grammar and reading

·Composition courses:

Writing methods and styles.

·Translation 1, 2, 3:

1 and 2 cover English into Japanese translation; 3 covers Japanese to English translation. Theory and practice of translation. Comparison of source text and target language translation.

2. Certificate Programs

(1) Japanese Studies Certificate

(A) Comparative Culture:

Art History

Introduction to Japanese Art, Survey of Japanese Art 1 and 2, Studies in Japanese Art History 1and 2, Topics in Japanese Art History, Japanese Narrative Painting, Comparative Art History 1and 2, Japanese Portraiture,

Literature

Introduction to Japanese Literature, Survey of Japanese Literature 1 and 2, Japanese Cinema, Modern Japanese Fiction 1 and 2, Seminar in Japanese Theater, Tokyo Narratives.

Religion

Japanese Religions, Religion and the Arts, Buddhist Traditions, Comparative Religion and Culture, Symbol and Religion, Philosophical Approaches to Buddhism, Sacred Space and Time, Christianity and Japanese Culture.

(B) Social Studies and Business and Economics:

Social Studies

•Anthropology

Ethnography of Japan and Other Societies, Approaches to Japanese Society, Japanese Symbolic Practice, Tokyo Urbanism.

•History

Development of Japanese Civilization 1 and 2, Research Methods in History, Japanese Business History, Japanese Women's History, Modern Japan, Issues in Japanese Thought, Religion and Society in Japan, Seminar in Modern Japanese History, Seminar in Japanese History.

•Political Science

Japanese Foreign Policy; Japanese Government and Politics; Nationalism, Citizenship and Democracy in Japan., Comparative Politics of Advanced Industrial Democracies

•International Business and Economics

Management in Japan, Human Resource Development in Japan, Japan and the World: Business and Economics, The Rise of Japanese Industry, Economic Survey of Contemporary Japan.

(2) Japanese Language Pedagogy Certificate

(A) Japanese Language Pedagogy courses:

Introduction to Linguistics, Introduction to Japanese Linguistics, History of the Japanese Language, Topics in Linguistics, Teaching Methods and Pedagogical Grammar, Teaching Method and Language Acquisition, Teaching Methods and Sociolinguistics, Teaching Methods and Beginning Japanese, Teaching Methods and Intermediate Japanese, Japanese Language Pedagogy courses are also offered by the Faculty of Foreign Languages and Studies.

(B) Advanced Japanese Language courses:

Advanced Japanese 2 and 3.

3. Length of Courses

All courses are completed in one semester. Except for Japanese language courses*, classes are 90 minutes each and meet twice a week. One semester consists of 15 weeks.

*Japanese language courses

·Japanese 1, M1, 2, M2:

Five 90-minute classes a week.

·Japanese 3, 4, Advanced Japanese 1, 2:

Four 90-minute classes a week.

·Advanced Japanese 3:

Two 90-minute classes a week.

·Intensive Japanese:

Fifteen hours a week.

4. Aim and Content of Courses

The Department of Liberal Arts emphasizes a comparative and interdisciplinary approach to the study of Japan, combined with training in the language skills appropriate to the particular needs of the individual student.

All courses are given in English, except for Japanese language courses.

Students are placed in Japanese courses on the basis of their performance on a placement test.

5. Application Requirements

New students are accepted once a year for autumn semester.

Non-native speakers of English must have a minimum TOEFL score of 79 on Internet - based test.

Accommodation:

Dormitories will be offered from Japan Student Services Organization (JASSO).

Contact Person:

Prof. John Tokarz

Chair, Department of Liberal Arts

Phone: +81-3-3238-4004

Fax: +81-3-3238-4076

<http://www fla.sophia.ac.jp>

Contact Office:

Overseas Liaison Center, Bureau of International Academic Exchange

Address: Sophia University, Yotsuya

Campus, 7-1 Kioi-cho, Chiyoda-ku, Tokyo 102-8554

Phone: +81-3-3238-3521

Fax: +81-3-3238-3554

E-mail: overseas@cl.sophia.ac.jp

WASEDA University (Tokyo)



Variety of classes with different levels are offered, and students have a wide choice of elective subjects and “Theme subjects” according to their goals and interests.

◇University's overview

1. History

In 1882, Shigenobu Okuma, one of the leading political figures of the Meiji Era, founded Tokyo College for Technical Studies (Tokyo-senmon-gakko), with the aim of upholding independence of learning, promoting the practical utilization of knowledge and fostering good citizenship. In 1902, this institution became Waseda University. Waseda University now consists of 13 undergraduate schools, 22 graduate schools and various affiliated research institutes. It has about 2,300 full-time faculty members, and about 53,000 students. In history and tradition and the number and achievements of its graduates and the standard of its teaching and research make it one of the most prestigious and most respected private universities in Japan. The University celebrated the 125th Anniversary of its foundation on October 21, 2007. A tradition of the university is the promotion of international education. Every year Waseda University accepts large number of foreign students.

2. Number of staff and students

Undergraduate Schools

Political Science and Economics/ Law/ Culture, Media and Society/ Humanities and Social Sciences/ Education/ Commerce/ Fundamental Science and Engineering/ Creative Science and Engineering/ Advanced Science and Engineering/ Social Sciences/ Human Science/ Sport Sciences/ International Liberal Studies

Graduate Schools

Political Science/ Economics/ Law/ Letters, Arts and Sciences/ Commerce/ Fundamental Science and Engineering/ Creative Science and Engineering/ Advanced Science and Engineering/ Education/ Human Sciences/ Social Sciences/ Sport Sciences/ Asia-Pacific Studies/ Global Information and Telecommunication Studies/ Japanese Applied Linguistics/ Information, Production and Systems/ Public Management/ Law School/ Finance, Accounting and Law/ Accountancy/ Environment and Energy Engineering/ Teacher Education

Staff Members (as of April 2009)

Full-time Faculty	1,500
Research Associates	322
Part-time Lecturers	4,099
Full-time Admin	788

Students (as of November 2009)

Undergraduates	44,373
Graduates	8,748

3. International Students (as of November 2009)

International Students	3,477
*Intensive Japanese Language Students	222

Visiting Researchers	252
----------------------	-----

◇Contents of the Course

1. Name of the Course

Intensive Japanese Language Program

2. Aims of the Course

The Intensive Japanese Language Program offered by the Center for Japanese Language at Waseda University was established to provide foreigners wishing to major in Japanese studies and/or Japanese Language Teaching or those who are currently engaged in those areas, with intensive courses to improve their Japanese.

3. Number of Students to be Accepted It's depend on the year

4. Qualifications and Conditions of Applicants

(1) Applicants are required to have the ability of Japanese equivalent to about 3,000 to 4,000 words and 600 to 800 kanjis.

(2) Applicant should be undergraduate with a major in one of the following areas:

Japanese Language, Japanese Language Teaching, Japanese Culture and Japanese Studies.

5. Period of the Course (Autumn 2008 Admission)

From September 21, 2010 to September 20, 2010
Fall semester

From September 21, to March 31

Spring semester

From April 1, to September 20

*Orientation and Placement Test will be conducted in mid September.

6. Course Descriptions

Courses of the Intensive Japanese Language Program are divided into eight different levels, and each of which offers comprehensive learning of Japanese language. Course and subjects will be determined after a Placement Test which students will take on enrollment to determine the student's level.

(1) Completion of Program

A student who has passed the prescribed examinations and earned 26 credits, 13 credits per semester in principle, is deemed to have completed the program and receives a Certificate of Completion.

(2) Subjects

- Credits given to each subject are based on the number of classes offered in a week.
- The subjects offered by Center for Japanese Language give 1 credit for one 90 minutes- class/week. The subjects offered by other faculties give 2 or 4 credits for one 90 minutes class/week.
- Level 1 and 2 students will take intensive courses (core courses) which consist of 10 classes per week in order to strengthen their basics. Higher levels offer wider range of choices when students select their subjects.

Type of Classes		Contents	Credits
C J L	Core Courses	Based on textbooks. Comprehensive Japanese learning from the basics to practical application.	3 or 5 or 10
		Based on activities. Mainly focused on training communication skills.	3 or 5
	Skill Subjects	Listening Comprehension, Reading Comprehension, Oral Expression, Written Expression, Grammar, Kanji and Pronunciation.	1/ each
	Japanese Theme Subjects	Lectures or activities about a certain theme related to Japanese society, culture, or Japanese language. (limited according to the level)	1/ each
Other Faculties		Audit lectures offered by other faculties. *Only 8 level students are available.	2 or 4

(3) Selection of Subjects

- Students will choose their classes according to their levels.
- All classes are held in Japanese.
- As to “core class”, students will choose one of text-based class or activity-based class.
- As to “skill subjects” and “theme subjects”, students will choose number of classes necessary to meet 13 credits as a total.

LEVEL	Goals	C o r e	Skill & Theme
1	These levels aim to acquire basic sentence patterns, vocabularies and expressions in order to obtain the elementary level of Japanese proficiency to communicate. The student is expected to acquire up to 2000 basic vocabularies and 500 basic kanjis.	10	3
2		10	3
3 4	The aim of these levels is to be able to use Japanese expression in various situations by increasing basic and intermediate vocabularies and acquiring broad range of communication skills. Students in these levels will be able to acquire basic Japanese language skills required in daily-life as well as in debating and presentation about different themes and assignments.	5	8
5 6		3 or 5	8 or 10
7	The aim of these levels is to acquire advanced level of Japanese language needed to participate in university lectures and research activities. Students in these levels will be able to acquire advanced level of communication skills in class discussion, presentation and writing assignments on advanced level of academic, social and cultural themes. The level 8 course students can enroll in up to 2 subjects in different faculty of Waseda University.	0 or 3	10 or 13
8		—	13

7. Faculty Members

(1)

Director Prof. KABAYA, Hiroshi
Associate Director Prof. IKEGAMI, Makiko

Prof. 11 (except from the above)

(2)

Assistant Prof. 1
Assistant Professor (without tenure) 5
Instructor (without tenure) 6
Part-time Lecturer 70
Instructor (part-time) 77

8. Extracurricular Activities

The Center organizes a number of extracurricular activities for its foreign students, the purpose of which is to complement their knowledge of Japanese society and culture acquired in the classroom. These activities include appreciating performance of Kabuki and going to overnight trip.

9. Number of Credits Given

Number of credits given in this course are according to students' institution systems.

◇Housing

Dormitories will be offered from Japan Student Services Organization (JASSO).

◇Contact

CENTER FOR JAPANESE LANGUAGE, WASEDA UNIVERSITY

Address : 1-7-14, Nishiwaseda, Shinjuku-ku, Tokyo
169-8050 Japan
TEL : +81-3-5273-3142
FAX : +81-3-3203-7672
E-mail : cjl@list.waseda.jp

URL: <http://www.waseda.jp/cjl/>

Intensive Japanese Language Program students as of December 2009

<Asia>

India	1	Indonesia	1
Korea	22(2)	Cambodia	1
Syrian	1	Philippines	2
Thailand	12	China	42(6)
Taiwan	27	Hong Kong	3
Viet Nam	1(1)	Israel	1
Myanmar	1	Malaysia	3
Singapore	1		

<Europe>

United Kingdom	13	Italy	3
Austria	2	Netherlands	1
Switzerland	2	Sweden	4(1)
Czech Republic	1	Denmark	1
Germany	12	Norway	3
France	13	Bulgaria	1
Belarus	2	Belgium	1(1)
Russia	5	Estonia	1
Spain	2	Slovak	1
Hungary	2	Latvia	1(1)
Lithuania	1(1)	Romania	1
Bolivia	1	Finland	3
Portugal	1		

<North America>

United States	13	Canada	4(1)
---------------	----	--------	------

<Central & South America>

Brazil	1(1)		
--------	------	--	--

<Oceania>

Australia	2	New Zealand	2
-----------	---	-------------	---

<Africa>

Egypt	1		
-------	---	--	--

Total 222(15)

*Numbers in () is the MEXT program students.

Keio University (Tokyo)



○ Program summary

The Japanese Language Program (JLP) is designed at each level to help students attain the Japanese language skills necessary for future research in specialized fields. The program also offers a range of levels and subjects to meet the needs of students studying at Keio University on exchange.

◇ Overview of Keio University

① History

Originally established in 1858 as Keio Gijuku, a school of Dutch learning by Yukichi Fukuzawa, a highly respected intellectual leader, Keio University is the oldest and one of the most renowned private institutions of higher education in Japan. Keio's first university departments were established in 1890 and were followed by the establishment of Keio Yochisha Elementary School in 1898. Since then, Keio University has expanded into a comprehensive educational system comprising primary, secondary and tertiary levels.

② Organization

Undergraduate faculties: Letters, Economics, Law, Business & Commerce, Medicine, Science & Technology, Policy Management, Environmental & Information Studies, Nursing & Medical Care, Pharmacy.

•No. of students: 28,479 (as of May 1, 2009)

Graduate Schools: Letters, Economics, Law, Human Relations, Business & Commerce, Medicine, Science & Technology, Business Administration, Media & Governance, Law School, Health Management, System Design & Management, Media Design, Pharmaceutical Sciences. No. of students: 4,873 (as of May 1, 2009)

• No. of staff (academic and administrative): 2,038 (international staff: 117)

•International exchange students: 1,053 (as of May 1, 2009)

•No. of Monbukagakusho JLP students: 9 (as of October 23, 2009)

•No. of students studying overseas: 186 (FY 2008)

◇ Program Outline (for Monbukagakusho and regular students)

(1) Program features

The JLP is taught using the direct method of teaching and offers a range of course levels and subjects allowing students to find a program of study that matches their needs and interests. The curriculum is designed at every level to help students to build the language skills necessary for future research in specialized disciplines. Students in advanced levels are also able to deepen their cultural knowledge by taking subjects from Japanese Studies on Society and Culture. Students who meet the registration requirements may also take a limited number of credit-bearing undergraduate or graduate subjects. In addition, students may take optional subjects conducted in English from those listed as International Studies or Japanese Studies subjects offered by International Center.

(2) Quota: 180 students (including a small no. of Monbukagakusho students) The average class size is 20 students, with enrollment varying from semester to semester.

(3) Program dates

Fall Admission: September 22, 2010 - July 21, 2011 (classes finish at the end of July.)

(4) Summary of course content

(for Monbukagakusho students and regular students)

① Compulsory subjects

Subjects are divided into Core subjects, Subjects with a specific focus, Japanese Studies on Society and Culture and Optional Subjects. For successful program completion subjects must be taken from all categories except "Optional Subjects".

(continued on the next page)

◇Housing

Keio University has a limited number of off-campus rooms. The monthly rent is about 50,000-60,000 yen, with most rooms about an hour away from Mita Campus.

◇Contact

Monbukagakusho Scholarship Program Coordinator

Office of Student Services (International)/ Center for Japanese Studies

Address: 2-15-45 Mita, Minato-ku, Tokyo 108-8345

Tel: +81-3-5427-1614

Fax: +81-3-5427-1638

URL:

<http://www.ic.keio.ac.jp/nncenter/index.html>

Email: ic-mext@adst.keio.ac.jp

◇ **Program Outline** (continued)

<Core Subjects>

Core Subjects are intended to develop the fundamental Japanese skills necessary for study at each level.

<Subjects with a Specific Focus>

The goal of Subjects with a Specific Focus is to improve the "speaking, listening, reading, and writing" skills of each student.

<Japanese Studies on Society and Culture>

Japanese Studies on Society and Culture are designed to deepen students' knowledge of Japanese culture and society. They are suitable for students at advanced levels.

<Optional Subjects>

Students also have the option of also taking Japanese Studies and International Studies subjects offered by International Center. Students with advanced Japanese may also take a maximum of two subjects (four credits) from among the courses offered in the university departments or graduate schools.

② Levels

The program curriculum is designed for students at every level and accepts students regardless of their Japanese ability or previous marks as long as they have advanced skills in a specialized field and a strong motivation to learn the Japanese language.

There are 12 language levels in the JLP. Student levels are determined by a placement test given at the beginning of semester. The levels are described below.

<Levels 1-3>

Suitable for beginners. Successful completion should enable facility in conversation necessary for everyday life, and an ability to read and write simple sentences.

<Levels 4-7>

Suitable for students who have mastered the fundamental Japanese skills. Students who complete the course will be able to use and understand average levels of spoken and written Japanese.

<Levels 8-10>

Suitable for students who have sufficient knowledge of Japanese to express themselves and understand most Japanese used in daily life. These levels aim to equip students with the skills to sufficiently understand university lectures, read text/reference books, write papers and take examinations.

<Levels 11-12>

Suitable for students who have attained a high level of Japanese proficiency. These levels aims to produce students

who can: (1) understand lectures in a specialized discipline, (2) participate in discussions and present reports at seminars, (3) read specialized books at a good pace and (4) write a thesis.

③ Study paths

The JLP is comprised of "The Comprehensive Course" and "The Alternative Course."

<The Comprehensive Course> Students will comprehensively study Core Subjects, Subjects with a Specific Focus and/or Japanese Studies on Society and Culture.

<The Alternative Course> This course is open for students at level four or above and is for students taking only Subjects with a Specific Focus and/ or Japanese Studies on Society and Culture.

④ Compulsory courses and credits

Registration requirements for each semester are as follows:

Levels	Core Subjects	Subjects with a Specific Focus, and/or Japanese Studies on Society and Culture	Total minimum credits to be registered
1, and 3-12	6 (6 credits)	1 (1 or 2 credits)	7 (7 or 8 credits)
2	10 (10 credits)	None	10 (10 credits)

Note: Each subject is 90 minutes duration (once a week)

<The Alternative Course> Students must register for seven or more classes per week from among Subjects with a Specific Focus, Japanese Studies on Society and Culture.

(5) Faculty members and academic guidance (as of October 1, 2009):

① Professors in charge

Director: Susumu TOMOOKA

Vice Director: Minori MURATA

Academic Advisor: Taeko TANAKA

② Collaborating faculties

-Full-time professors (Center for Japanese Studies): 8

-Full-time professors (undergraduate programs and part-time lecturers): 44

③ Chief Executive

-Administrative staff: Ichizai SEKIGUCHI

④ Student guidance

Class coordinators provide individual counseling to students regarding their studies and daily life.

Further study guidance support is available from a team of three academic advisors.

⑤ Activities

International student organizations arrange activities such as conversation partners, Japanese Club, speech contests, cultural exchanges, excursions, Japanese cultural activities, and bazaars.

⑥ To successfully complete the program, students must be enrolled for one year and pass two different levels. To pass each level, students must meet the requirements regarding subjects and credits (Ref. see (4)④ Compulsory Courses and credits). Those who have completed the program will be awarded a Certificate of Completion.

(7) Prerequisites

Applicants must have graduated from senior high school or the equivalent. Preference is given to applicants who have studied in a specialized discipline in their undergraduate programs.

(8) Recognition of credits; transferring credits

Students who are in Level 8 or above may take undergraduate and graduate subjects. In the JLP students are able to receive credits for a maximum of two subjects (four credits). The student's home institution's rules apply regarding the transferring of credits.

Niigata University (Niigata)



We provide some REAL program for those who wish to become Japanese instructors and Japan introducers

◇An Overview of Niigata University

Niigata University is located on the coast of Japan Sea. Niigata prefecture is usually known as a place for good rice and heavy snow. Niigata city itself does not have heavy snow. In addition, the cost of living is much cheaper than that in Tokyo. The size of Niigata city (where our university is) is just right for foreign students who wish to study Japanese and people's life in Japan but not big enough for those who wish to enjoy night life in big city such as Tokyo. You can enjoy winter sports such as skiing and snowboarding at nearby mountains and summer sports on beaches. You can also visit Tokyo just for weekends. We can assure you that our program offers a great opportunity to those who wish to become Japanese Language Instructors in their future and to those who will be a great personnel to introduce real Japan and its people.

◇**Number of students in the program will be:**
maximum 10(maximum 5 for Japanese instructor course, 5 for Japan introducer course)

◇**Period of the program:**
2010 October – 2011 September

◇**Course summary:**
5 special subjects which are designed and related to teaching Japanese as a foreign language are compulsory. Students will also be advised to take some regular subjects which they have to study with Japanese students.

Japanese instructor course (compulsory)	Japan introducer course (12credits compulsory)
Teaching Japanese as a Foreign Language I (language structure) : 2 credits	Japanese A,B,C,D,E,F,G,H,J : 1 credit each
Teaching Japanese as a Foreign Language II (teaching methods) : 2 credits	History of Japan A,B: 2 credits each
Structure of Japanese Language (grammar · phonology) : 2credits	Religions in Japan A,B: 2 credits each
Japanese Language Teaching methods : 2 credits	CrossCultural Communication A,B : 2 credits each
Japanese Language Teaching training : 4 credits	Culture and Society in Japan A,B : 2 credits each
	Science and Technology in Japan A,B: 2 credits each
Course report : 6 credits(compulsory)	

◇Organization of the program

All the students will have private session with their supervisors here at Niigata every week. Japanese instructor course students will have 2 supervisors(ISC experienced Japanese instructors;1 male 1 female). Those instructors are also managers of all the Japanese learning programs at Niigata University. Japan introducer course students will also have 2 supervisors(1 faculty staff, 1 ISC staff).

◇Certificate of the graduation

A certificate to prove their fulfillment of all the required course work will be given to the students at the end of the program.

◇Course requirement:

Students should earn more than 30 credits in a year including compulsory subjects(18credits) in each course.

All the students applying for this program must have passed Japanese Proficiency Test level 1 before coming to Niigata. In order to concentrate on their study, students are not encouraged to bring their families.

Credits will be given.

◇Accommodation

There is a dormitory building named Niigata University International House in campus. Also, university has 3 apartments for international students outside of campus with almost the same condition of International house.

Many real estate agents provides apartments near campus. Average rent fee is ¥20,000 to ¥50,000 for one-bed room.

□ Contact

International Exchange Support Center (ISC)or
International Affairs Division, Niigata University
#8050 Ikarashi 2nocho, Nishiku, Niigata-City, N
iigata Prefecture, JAPAN ZIP 950-2181

TEL: +81-25-262-7627

FAX: +81-25-262-7519

Email: iked@isc.niigata-u.ac.jp

shibata@isc.niigata-u.ac.jp

kokusai@adm.niigata-u.ac.jp

HP: <http://www.niigata-u.ac.jp/>

Joetsu University of Education (Niigata)



The Aim of the Program: To provide overseas students with necessary training in Japanese language and culture, in accordance with each student's interests.

◇ Overview of the University and Joetsu City

① Outline and Overview of Joetsu University of Education

1) Characteristics and History

In order to meet contemporary needs, Joetsu University of Education was established in 1978 as a national university which aims to promote the theoretical and practical studies of school education. It consists of the Graduate School of Education, which mainly intends to provide advanced studies in school education for in-service teachers, and the College of Education, which offers undergraduate courses in teacher training.

In 2008, in accordance with the development of the Teaching Profession Graduate School System, the Professional Degree Program (Graduate School of Professional Teaching) was established in the Graduate School of Education.

2) Teachers and Students (as for April 2009)

Teachers: 154

Students: Undergraduates: 686

Graduate: 658

② International exchange (as for October 2009)

Foreign students: 41 (7 countries)

Exchange agreements with overseas universities: 10
(7 countries)

Students in the Japanese Studies Program

2005: 1 (Lithuania), 2007: 1 (China),

2008: 1 (Turkey)

③ Features of Joetsu city

Joetsu City has numerous historical and cultural assets. Also, it is surrounded by impressive nature and is famous as one of Japan's snowy cities. Joetsu City is located on the west coast, 2 hours by train from Tokyo.

◇ Course Outline

- 1 Number of students to be accepted: 4
- 2 Period of study: from October 1, 2010 through September 30, 2011
- 3 Contents of the Course

- Overseas students, registered as special auditors, can attend the following classes and acquire course credits after fulfilling certain requirements.
- After enrollment, students can also take other lectures not listed below, with the professor's permission.



[The Front View of Joetsu University of Education]

[Subjects of College of Education]

* Required Class

	Subject	Contents
Japan Affairs	Japanese and Japanese Society 1 *	To deepen understanding of Japanese language and society through various topics, and to acquire Japanese language skills.
	Japanese and Japanese Society 2 *	To deepen understanding of Japanese language and society through various topics, and to acquire Japanese language skills.
	The Constitution of Japan	First, to improve understanding what the modern constitution is. Second, to acquire basic knowledge of the fundamental principles and the establishing process of the Japanese Constitution and the Constitution of the Empire of Japan.
Japanese Culture	History of Japanese Fine Arts	First, to study the characteristics of Japanese Fine Arts through modeling of 'KATACHI' (form) of the tangible cultural properties found in ancient tombs, temples, shrines, and so on. Second, to examine the methods and ideas of the peoples and their culture in those times.
	Culture and Expressions of Calligraphy	First, to gain a theoretical understanding of the origin of kanji and the history of calligraphy in China. Second, to experience 'SHO' (Calligraphy) as an exponent of Japanese culture.
	Cultural Experiences	To experience integrated learning through cultural properties such as museums, libraries, archives, historical sites, temples, castle towns, excavation sites and so forth.
Intercultural Communication	Practical Seminar in Intercultural Communication	To enhance ability in basic intercultural communication, which plays a significant role in various forms of mutual understanding between overseas students and Japanese students.
	Seminar in Basic Intercultural Communication*	To enhance ability in practical intercultural communication, which plays a significant role in various forms of mutual understanding between overseas students and Japanese students.
	Multicultural Society	To acquire basic knowledge and practical skills in educational activities required for understanding and adjusting to multicultural society today.

Japanese Literature	Japanese Literature Reading	To improve understanding of what is reading a story for joy and what is the significant of dealing with a literary work as an educational material through the experience of reading more than 10 short stories written in the Meiji, Taisho, Showa and Heisei eras.
	Japanese Geography and History	Study of Japanese History A
Study of Natural Geography		To understand the basic notions and ideas of physical geography by comparing Japan with the rest of the world
Epistemology of Pre-Modern Social History of Japan		To understand various issues related with history education and news in Japan, focusing on pre-modern social historical studies of Japan, especially in relation to modern history.
Education in Japan	Comparative Educational Studies	To understand differences between Japanese and French attitudes to education and human development, and consider education from various viewpoints. Overseas students are required to deepen their understanding of education by comparing this with education in their home countries.
	Introduction to Special Needs Education	To deepen understanding of special needs education, practical aspect of education in special-needs schools and elementary and junior high schools, and learn how to deal with children with special needs and so on.
	Introduction to Body Expression	To deepen practical understanding of exercises for pleasure that are necessary for the healthy development of body and mind through experiencing common and traditional child's play in Japan.
	Introduction to Child Education	To report on and discuss subjects, prepared by each student, about educational and child-care issues, child educational issues caused by social changes, family problems of child-rearing, problems surrounding formal organizations and so on.
	School Subjects	To deepen understanding of school education in Japan by focusing on each school subject (e.g., Japanese, math, science, social studies, integrated study, life environmental study, music, arts and crafts, physical education and home economic education). Overseas students are required to deepen their understanding of each subject through comparison and contrast with equivalents in their countries.
	School Organization in Japan	Essential Theory of Education
Theory of School Organization		To deepen understanding of the characteristic features of school and the recent environment of school organization.
Theory of Academic Aptitude Testing		To understand basic concepts of academic aptitude testing and the ways to measure and analyze potential academic ability.

[Japanese language Course]

Subject	Contents
Academic Japanese for Writing 1	To improve basic writing skills that are required in university life.
Academic Japanese for Writing 2	To improve Japanese language skills required for explaining one's own research in Japanese. Students are required to experience a practical learning process to set own research theme, collect data, analyze and examine.
Academic Japanese for Speaking 1	To improve basic speaking skills that is required for speech and presentation at university student's life.
Academic Japanese for Speaking 2	To improve Japanese oral skills to explain one's own research in Japanese. Students are required to experience a practical learning process to set own research theme, collect data, analyze and examine.
General Japanese A1	To improve reading skills in Japanese, by reviewing basic but difficult grammar items for JSL learners, and to gain basic Japanese skills.
General Japanese A2	To improve reading skills in Japanese, by reviewing relevant grammar, vocabulary and expressions, and to gain basic Japanese skills.
General Japanese B1	To deepen understanding Japanese culture, life, history, geography, current news. To improve skills in brief and accurate description through discussion tasks.
General Japanese B2	To deepen understanding of Japanese culture, life, history, geography and current news. To improve skills in brief and accurate description. Students are required to prepare materials on topics of their own interests, give presentations and have discussions.

[Special Course of Studies of Japanese and Japanese Culture]

Subject	Contents
Academic Research of Japanese and Japanese Culture	To set one's own research theme about Japanese language and culture under the guidance of research advisors and JSL advisors through the One-Year Japanese Studies Program. Students are required to write a thesis / report on their research studies and make a presentation.



[A Japanese class]



[Studies in Japanese Language and Culture]

4 Guidance

- Academic adviser: each overseas student has his/her own academic adviser who gives guidance on course selection and research instructions.
- Japanese language instructors: Japanese language instructors will help your difficulty in language learning and improve your Japanese.
- Advisers: The staff of the international exchange office will assist you in leading a comfortable learning and on-campus & off-campus life during your stay in Joetsu.

5 Completion of the Program

Students who complete more than 12 classes including required classes and electives will be issued with a certificate.

6 Qualifications and conditions for applicants

a) Qualifications

Applicants must, at the time of arrival in Japan, be enrolled in a faculty or department offering studies in the Japanese language and/or Japanese culture. First-year students at your university are not eligible to apply for this program.

b) Japanese language proficiency

Applicants must be able to understand lectures, read reference materials, write papers, and make oral presentations in Japanese.

7 Credits and transfer of credits

Units you acquire will be kept on your academic record at Joetsu University of Education so that you may count them when you return to study at Joetsu University of Education later on.

8 School visits

Visiting the University Attached Elementary School Attached Junior High School, and other local school.

9 On-site practice in nature and cultural events

- Japanese cultural experiences: dressing in kimono (*kitsuke*), cherry blossoms-viewing (*hanami*), tea ceremony etc.
- Community-based cultural experiences: home-stay, folk music festival, bus tour, etc.
- Sports: ski-trip, etc.



[Kimono Kitsuke]



[Cherry blossoms-viewing (*hanami*)]



[Ski Trip at Myoko Kogen]



[Ocha-kai (Tea Ceremony Party)]



[Joetsu Matsuri]

◇ Accommodation

The university has an international dormitory for foreign students, foreign researchers and Japanese students. Fifteen one-bedroom apartments and three apartments for families are available for foreign students.



[International Dormitory]



[Single room]

【Contact】

International Student Section,
Joetsu University of Education
1, Yamayashiki-Machi, Joetsu-City, Niigata,
Japan, 943-8512.

Phone: +81-25-521-3299

FAX: +81-25-521-3621

E-mail: ryugaku@juen.ac.jp

Home page: <http://www.juen.ac.jp>



[Myoko, Hiuchi, and Nanba Mountains viewed from the Sekikawa River during the winter season]

University of Toyama (Toyama)



While respecting the interests and concerns of each individual student, this program offers an opportunity for in-country study of Japanese language and culture. After receiving instruction in basic Japanese language and culture, students progress to more advanced study of language and culture alongside their Japanese peers. A curriculum is tailored to the individual needs and level of each student as we try to strike a balance between the basic and more challenging classes.

◇ University of Toyama Overview

(1) Characteristics and Outline

In October 2005, three universities (Toyama University (Established in 1949), Toyama Medical and Pharmaceutical University (Established in 1975) and Takaoka National College (Established in 1983)) were integrated into University of Toyama. It is a national university with a wide range of education and research facilities.

As of May 2009, there were 9,202 students and 975 members of the teaching staff. Academic exchange agreements have been drawn up with 88 universities/institutions in 21 countries (Australia, People's Republic of China, Arab Republic of Egypt, India, Republic of Korea, Malaysia, Russian Federation, Thailand, United Kingdom, USA, etc.). We are eager to welcome international students, and our International Student Center plays a key role in enabling us to do so.

Faculties: Faculty of Humanities,
Faculty of Human Development,
Faculty of Economics,
Faculty of Science,
Faculty of Medicine,
Faculty of Pharmaceutical Sciences,
Faculty of Engineering,
Faculty of Art and Design

Graduate schools: Graduate School of Humanities,
Graduate School of Education,
Graduate School of Economics,
Graduate School of Innovative Life Science,
Graduate School of Medicine and
Pharmaceutical Sciences for Education,
Graduate School of Science and Engineering for
Education

(2) International Exchange (as of May 2009)

Currently as of May 2009, there are 329 international students enrolled at the school representing 21 countries. Of these, 19 representing 7 countries are enrolled in one-year programs, and two of these from two different countries are here studying Japanese language and culture.

(3) Toyama Prefecture

Located near the geographic heart of Japan, Toyama prefecture is beautifully situated on the Japan Sea coast against the backdrop of the majestic Japan Alps that raise up to an altitude of 3,000 meters. The prefecture has four distinct seasons, and the snow-covered Toyama winter landscape is particularly beautiful. Toyama abounds in interesting vestiges of old Japan including nearby Gokayama village of steep thatched roof *gassho*-style houses (designated a UNESCO World Heritage Site) and the folk song tradition of *Etchu Owara Bushi* that is known and associated with Toyama throughout Japan.

The university is located in Toyama City, the prefectural capital and a modern metropolis with a population of 420,000. Toyama City is about three hours from Tokyo and Osaka by high-speed train, and it's about a one-hour flight from Toyama Airport to Tokyo. Blessed with fresh clean water and air, excellent seafood, and all sorts of cultural amenities, Toyama is regarded as one of the most convenient and congenial places to live in all Japan.



Toyama City and
the University of
Toyama
(Gofuku Campus)

◇ Course Outline

(1) Maximum Number of Students

Ten students altogether, five by embassy recommendation and five by university recommendation. (Five students are admitted to the Faculty of Humanities and five students To the Faculty of Human Development.)

(2) Term

From October 2010 to September 2011.

* Can be completed in August by taking extra classes.

(3) Outline of Subjects

International students choose from basic course offerings [a] relating to Japanese language and culture that are designed specifically for international students and from the wide range of more specialized course offerings [b] pertaining to Japanese language and culture offered through the Faculty of Humanities, Human Development, and Economics according to their individual interests and proficiency levels. International students are also paired with guidance counselors from the Faculty of Humanities and Human Development. The counselors give students individual instruction and help the students select interesting research topics for their final reports.

① Subjects

[a] Subjects relating to Japanese language and culture

Subject	Number of classes		Description
	Fall	Spring	
Japanese B	2	2	Students improve general Japanese language proficiency. Practice includes oral presentations based on interviews and other activities.
Japanese Culture I	1		Students learn about Japanese and Toyama culture, with emphasis on Japanese art and traditional culture.
Japanese Culture II		1	Students learn about Japanese and Toyama culture, with emphasis on the natural environment and local industry.
Japanese Culture III	1		Students learn about Japanese and Toyama culture, with emphasis on Japanese society.
General Japanese Language Course			
Reading	2	2	Students improve their reading skills with practice reading articles, essays, and reports. Students are divided into two classes based on their reading ability.
Grammar	1	1	Students improve their advanced grammatical skills and expressiveness through practical exercises.

Composition	1	1	Students improve their ability to write reports in Japanese using word-processing software and computers.
Listening	1	1	Students improve listening comprehension by listening to news and television programs.
Conversation	1	1	Students hone their conversational skills through role-playing and by making oral presentations.
Kanji	1	1	Kanji lessons and practice is tailored to the level and capability of each individual student.
Expression Skills	1	1	Students improve their formal Japanese spoken and written skills.
Japanese Culture	1	1	Using visual materials, emphasis is on contemporary Japanese culture.



Calligraphy



Flower arranging



Folk song of Toyama

[b] Specialized Courses (classes for ordinary students)

Students choose from a wide range of specialized courses offered by each department. Here we provide an overview of some of the more specialized course offerings pertaining to Japanese language and culture that are available through each department.

<Faculty of Humanities> Courses pertaining to Japanese language and culture include Human Sciences, Linguistics, Japanese as a Foreign Language, Japanese History, Cultural Anthropology, International Relations, Cross-Cultural Studies, International Cultural Studies, Japanese Language, and Japanese Literature. Visit the Faculty of Humanities website for details at <http://www.hmt.u-toyama.ac.jp/>.

<Faculty of Human Development> Courses pertaining to Japanese language and culture include System of School and School Management, Developmental Clinical Psychology, Japanese Social History, Educational Technology, Intercultural Understanding, Japanese Philology, etc (refer to the syllabus for each course to see if there are prerequisites or other eligibility requirements).

<Courses in Other Faculties> In addition, international students may also take classes pertaining to Japanese language and culture offered through the Faculty of Economics (Economics, Business Administration, and Business Law), and other liberal arts education subjects taught at the university.

* Syllabus for Specialized Courses, the *Japanese B* course, and the *Japanese Culture* courses are available at <http://syllabus.adm.u-toyama.ac.jp/syllabus/>

The syllabus for the *General Japanese Language Course* is available at <http://www.isc.u-toyama.ac.jp/japanese/edu/sogo.html>.

② Number of Classes

The fall term (October – March) and the spring term (April – September) are 15 weeks long, and one class is 90 minutes.

Students choose eight or more classes per semester based on their own interests and proficiency levels from among the course offerings (a) relating to Japanese language and culture and from the specialized course offering (b), for a total of 16 classes for the full year (fall and spring semesters). The students also receive one-on-one individual counseling and instruction from their guidance counselors.

(4) Counseling Support System

Guidance counselors in the student's area of study, in the department through which the class is offered, and in the International Student Center work together to provide students with individual guidance regarding both academic and non-academic concerns.

(5) Field Trips and Events

Many field trips and events are offered, including events organized and arranged especially for the international students. There are study trips to culturally significant Toyama sites, and overnight trips providing opportunities to learn about Japanese culture and history sponsored by the departments. There are many support and exchange activities organized by the Japanese students (small individual study groups, exchange get-togethers, and parties), including an always well-attended party sponsored by the President of the university that provides an opportunity for researchers from around the globe and international students to get together and chat with the President.

Our students also have numerous opportunities to meet and interact with local people through home stay and home visit programs, and through the many cultural and recreational activities that are offered. These include ski tours, the famous Toyama summer *Owara* folk festival with singing and dancing and the opportunity to wear the informal summer *yukata* kimono. Students can experience a genuine tea ceremony, New Year's parties, cherry-blossom viewing in the spring, barbecues, bowling, and countless other activities.



Field trip

(6) Certificate of Completion and Credit Transfer

- ① Students who complete the required 16 classes (eight classes each semester) and submit a final report are issued a Certificate of Completion.
- ② Students who satisfy the attendance, testing, and other requirements of the University of Toyama program are issued a Certificate of Completion detailing the subjects and number of classes completed.
- ③ Guidance counselors with the Faculty of Humanities and Faculty of Human Development work together on a one-to-one basis with international students to help them select an interesting research topic to address in their final reports.

These final reports are compiled as a collection of final papers.

The titles of former reports can be perused online at <http://www.hmt.u-toyama.ac.jp/RYUGAKUSEI/iinkai/report.html>.

(7) Qualifications and Requirements for Admission

Students wishing to enroll in this program must meet the following requirements.

① Academic Background

Applicants must be an undergraduate at a foreign (non-Japanese) university majoring in fields related to the Japanese language or Japanese culture at the time of arriving in and leaving Japan.

② Japanese language proficiency

Students must show Japanese language proficiency equivalent to Level 2 of the Japanese Language Proficiency Test administered by the Japan Foundation and the Japan Student Services Organization.

◇ Housing

University of Toyama has an accommodation facility for international students, International House on its campus.

In case the number of vacant rooms is not enough to accommodate all of prospective students, at the university Coop the list of real estate agents for the apartment houses and flats in the campus neighborhood is available, and also the university staff will assist students so that they may make a smooth move-in.

The International House (Gofuku) has 34 individual rooms. The lodgings costs are monthly basis 5,900 yen.

The room has the bathroom and the kitchen, and the kitchen furnishes the electromagnetic cooker and the refrigerator. Moreover, the room is offered with the air conditioner, the bed, the table, and the chair. Each room also has a dedicated Internet connection. The application and monthly charge are required to use the service.

◇ For further information, please contact

Study-Abroad Support Team, Student Support Group,
Academic and Student Affairs Division,
University of Toyama

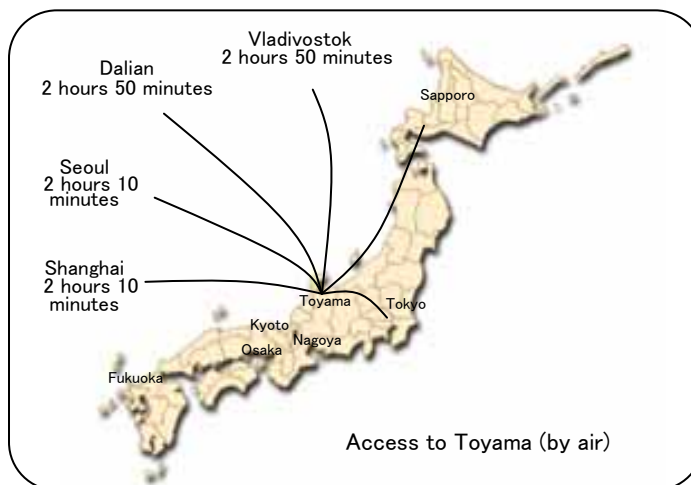
3190 Gofuku, Toyama 930 - 8555, Japan

Tel: +81- 76 - 445 - 6082

Fax: +81- 76 - 445 - 6093

E-mail: ryugaku@adm.u-toyama.ac.jp

Website: <http://www.u-toyama.ac.jp>



Four seasons in Toyama



Spring



Summer



Fall



Winter

Kanazawa University (Ishikawa)



ACQUISITION OF JAPANESE LANGUAGE PROFICIENCY THROUGH INDIVIDUAL RESEARCH, JOINT STUDIES AND HAND-ON EXPERIENCES ON JAPANESE SOCIETY AND CULTURE

◇ University's Overview

① Outline of Kanazawa University

(Data as of May 1, 2009)

Kanazawa University was founded in 1949 as one of the new national universities, by uniting and reorganizing eight institutions of higher education then in operation, including Kanazawa Medical College, which dates back to 1862. The university has continued to expand since, and now has on its two campuses (Kakuma and Takaramachi) a total of 3 colleges and 16 schools: (1) College of Human and Social Sciences consisting of School of Humanities, School of Law, School of Economics, School of Teacher Education, School of Regional Development Studies, School of International Studies, (2) College of Science and Engineering consisting of School of Mathematics and Physics, School of Chemistry, School of Mechanical Engineering, School of Electrical and Computer Engineering, School of Environmental Design, School of Natural System, (3) College of Medical, Pharmaceutical and Human Sciences consisting of School of Medicine, School of Pharmacy, School of Pharmaceutical Sciences, School of Health Sciences. It also has five graduate schools offering degrees in Education, Medical Science, Human and socio-environmental studies, natural science and technology and Law.



Number of Academic Staff and Students

【Number of Academic Staff】: 1,008

【Number of Students】: Undergraduate Students: 7,993,
Graduate Students: 2,355, other Non-degree Students: 187,
Total Number of Students: 10,535

② International Exchange

Number of Affiliated universities and institutions: 101 (22 countries, 1 region); Partner Universities: 46, Partner Faculties: 55, Number of international students: 345

Number of Japanese Language and Culture Program students: 15 (from 7 countries for the academic year 2009, including 12 students accepted in accordance with affiliations with foreign institutions)

Total number of Japanese Language and Culture Program students accepted: 186 (including students of year 2009)

③ Kanazawa City's Characteristics

Kanazawa, is one of the largest cities on the Japan Sea coast, which still retains the calm atmosphere of an old castle town with old architecture and a rich traditional culture. It is well known for traditional arts and crafts and for classical performing arts as well as for the famous Japanese garden Kenrokuen. The four seasons adorn Kanazawa, with the surrounding sea and mountains further emphasizing its natural beauty. It is often called "Mori no Miyako", the tree-clad town, since it is rich in greenery.

◇ Outline of the Program

Name of the Program: Japanese Language and Culture Program, Kanazawa University

① Number of Students to be accepted: 20

② Course Duration: From October 1, 2010 to September 16, 2011 (including the independent research period)

Semesters: October - February (Fall Semester), April ~ July (Spring Semester)

Oral Presentation Practice and Report Writing Period: August 1 ~ September 15

③ Outline of Courses Offered

(length of 1 course = 15 weeks, length of one lecture = 90 minutes)

Japanese Culture Courses (compulsory, 3 courses per week)

COMPULSORY COURSES	Number of classes per week (number of credits)		
	Fall	Spring	Total
Japanese	3(3)	3(3)	6(6)
Specific Skills in Japanese	1(1)	1(1)	2(2)
Kanji	1(1)	1(1)	2(2)
Japanese Culture Seminar I	1(2)	1(2)	2(4)
Japanese Culture Seminar II	1(2)	1(2)	2(4)
Workshop in Japanese Culture Seminar	1(2)	1(2)	2(4)
Survey and Training Seminar	1(2)	1(2)	2(4)
Completion Research Seminar	1(2)	1(2)	2(4)
Total	10(15)	10(15)	20(30)

(a) Japanese Culture Seminar I

This course provides the students with an overall view of the Japanese society and culture. Lectures are given by specialists from the related fields

covering topics such as Japanese society, lifestyle, politics, economics, education, gender, subculture, etc. This course aims not only in providing students with firsthand knowledge on present day Japan, but also in applying such knowledge to their own country and to themselves in order to percept an objective view of society and of 'self'. Since each section consists of a presentation session followed by a debate, enthusiasm in class participation is a prerequisite.

(b) Japanese Culture Seminar II

This course is linked with the Workshop in Japanese Culture seminar, and aims to provide the students with necessary knowledge on topics and cultural experiences to be taken up in the workshop and thereby bringing forth a better understanding of the Japanese society and culture. Topics on history, culture, religion, language, technology, industry, traditional arts and crafts and literature will be taken up. This course will try to unveil mysteries of Japanese culture such as "Iemoto Seido" and "Shokunin Katagi".

(c) Workshop in Japanese Culture

This course provides students with 'hand on' experiences in the Japanese culture. Students will have the opportunity to learn from experts from respective fields, who have devoted their lives to accomplish skills to a near perfection, and have a glimpse at the philosophy of their lives. Experiences in Kutani pottery, Makie art of Wajima lacquer ware, Kaga Yuzen silk-dyeing, Japanese paper craft, gold leaf, traditional Kaga cuisine and making Japanese rice cakes, tea ceremony, Ikebana, Zen meditation, Noh drama, Koto, Haiku poetry, visits to Japanese schools and ateliers etc. will enable students to acquire a firsthand knowledge of the culture.

Survey and Training Seminar (compulsory, 1 course per week)

Students will conduct joint research in Japanese language or culture, in mixed groups with the Japanese students. Guidance is provided on research methodology and on improving presentation skills. Furthermore, interview surveys will be held with the Japanese students leading up to discussions on current issues. By such joint survey and research projects, this course also aims to enhance international exchange with the Japanese students.

Completion Research Seminar (compulsory, 1 course per week)

Students will give presentations on a regular basis on their own research topics, in accordance with a set research plan enabling them to conduct their research step by step.

Japanese Language Course (compulsory, 5 classes per week)

Japanese Courses	Classes per week	Kanji	Specific Skills	Level
C2 (Intermediate Level I)	3	Kanji C	Listening	C2
			Conversation	C2
D (Intermediate Level II)	3	Kanji D	Listening	D
			Composition	D
E (Advanced Level I)	3	Kanji E	Report Writing	E
			Oral Presentation	E
			Intermediate Reading Comprehension	E
F (Advanced Level II)	3	Kanji F	Computer-assisted Report Writing	F
			Advanced Reading Comprehension	F
			Discussion	F

Courses offered by other faculties (elective)

In addition to the abovementioned compulsory courses, students are encouraged to take courses related to their field of research regularly offered by various faculties to the Japanese students. At the beginning of each semester guidance will be given on registration procedures for these courses.

Completion Research (compulsory)

Students are required to conduct a research on a topic concerning Japan and give a 15 minute-oral presentation and submit a 15 A-4 sized research paper on the same topic for the completion of the program. Guidance on research methodology will be given in Survey and Training seminar in addition to individual advice given at the Completion Research seminar. The final oral presentation on students' respective topics will be held in August.

Furthermore, a three day camping in will be held during early April where each student will give an interim report on their respective research. During this camping in cultural activities such as pottery making will be conducted in addition to exchange activities with the Japanese students.



④ Advisory System

Masashi Mine (Associate Professor, International Student Center, specialty: Linguistics) and other faculty members

Supporting Academic Staff: 40 (Japanese teaching staff and members of other faculties giving lectures in Culture Seminars)

Chief coordinator of the program serves as the academic supervisor and provides the students with guidance and academic advice on carrying out their respective research, preparing for presentations and report writing.

Assistance of faculty members of College of Human and Social Sciences might be obtained in giving academic advice on certain research topics. Individual guidance is also provided on selecting elective courses each semester.

The chief coordinator of the program provides the students with advice on student life.

Furthermore, they are able to use the counseling system available to all international students.

⑤ Extra-curricular Activities

1) Cultural Activities and Field Trips

In addition to cultural activities conducted as part of the Workshop in Japanese Culture dressing up in kimono, Noh theater, calligraphy, pottery, Japanese drum beating, participation in festivals, bus trips with Sato-oya families and research workshop with high school students, etc. are arranged.

2) Exchange Activities with Sato-oya Families

Each Student will be introduced to a Japanese family who will serve as his/her 'Kanazawa Family' throughout the year. This program enables students to view Japanese lifestyle from an insider's perspective, and learn about the way of thinking of the Japanese.

⑥ Conditions for Completion of the program, and Completion Certificates

In order to complete the program successfully students must pass all compulsory courses, give a public oral presentation at the end of the program on their respective research topics and submit a research paper on the same topic.

A completion certificate will be issued to those who successfully fulfill the abovementioned conditions. In addition to this certificate, students will be provided with an academic transcript in which their grades for Japanese Language classes and compulsory courses of the program and other courses taken will be recorded.

⑦ Approval of Credits and System for Credit Exchange

Students will be provided with an academic transcript indicating courses taken, grades acquired and number of credits. Based on this certificate student's home country universities will decide whether or not to approve credits.

⑧ Qualifications and Requirements for Application

Applicants must satisfy the following conditions:

- (1) Applicants must have sufficient Japanese language ability to converse, read and write basic Japanese (a level equal to that of Japanese Language Proficiency Test Level 2).
- (2) Applicants should be majoring in a field relevant to Japanese language or culture in their home country universities.
- (3) Be a junior or a senior student at a university in their home country.
- (4) Applicants should be prepared to devote themselves to studies of this program throughout the year. Enthusiasm on research work and class participation is a must.



◇ Accommodation

Participants can choose one of the two accommodation facilities given below.

1) International House located inside the campus, the accommodation facility for international students and researchers studying at Kanazawa University (only single rooms are available).

Number of Rooms: 79 (68 rooms for students and 11 rooms for researchers), Rent etc.: ¥7,700 per month (Additional initial deposit of ¥20,000 is also necessary.), maintenance Fee: ¥2,000 per month, utility Charges: actual expenses of electricity, gas, water etc.

Facilities: kitchen, bathroom, attached toilet, air conditioner, bed, desk with bookcase, chair, cupboard, refrigerator, vacuum cleaner, etc., Access to the internet is provided from each room.

2) House sharing with Japanese students

Applicants can experience Japanese culture by residing in traditional Japanese houses such as Machiya, a new dormitory style enabling them to share houses with the Japanese students.

Most of the participants for the past three years resided in the International House while few of them did room sharing with Japanese students.

◇ Contacts

Kanazawa University, Student Affairs Department, Student Affairs Division

Address: Kakuma-machi, Kanazawa 920-1192, Japan

Tel: +81-76-264-5188 Fax: +81-76-234-4043

E-mail: ryuiku@adm.kanazawa-u.ac.jp

Homepage: <http://www.kanazawa-u.ac.jp/>

E-mail Address of the Program Coordinator:

mmine@kenroku.kanazawa-u.ac.jp

University of Fukui (Fukui)



Fruitful instruction and flexible curriculums that satisfy each student

◇Overview of University of Fukui

① Organization

University of Fukui has three faculties: the Faculty of Education and Regional Studies, the Faculty of Medical Sciences and the Faculty of Engineering, and three Graduate Schools: the Graduate School of Education, the Graduate School of Medical Sciences, and the Graduate School of Engineering.

The Faculty of Education and Regional studies offers two programs: the Teacher Education Program, the Regional Studies Program.

The Faculty of Medical Sciences comprises two departments.

The Faculty of Engineering comprises eight departments.

② Number of Students and Academic Staff

- Undergraduates 4,147
- Graduates 860
- Academic Staff 558

③ International Exchange

International Students
234 (from 24countries)

International researchers
11 (from 5countries)

Japanese Language and Culture Studies Program Students

1 or 2 (annually)

④ Environmental features

University of Fukui is located in the center of Fukui City, the biggest city of Fukui Prefecture. Fukui Prefecture is situated in

the central part of Japan and is blessed with both natural beauty and a rich cultural heritage. Facing the Sea of Japan, Fukui played an important role in ancient times as a gateway to and from continental Asian countries, and it still retains many relics that reflect its long history and tradition.

Fukui is a beautiful place which changes its appearance according to the turning of the four seasons.

◇Outline of the Program

① Number of Students to be Accepted: 5

② Period of the Program: Oct. 1, 2010 ~ Sept. 30, 2011

③ Outline

- This program is designed to improve your proficiency in Japanese and to deepen your understanding of Japanese culture.
- You shall take courses in specialized and/or interdisciplinary fields in the campus and gain credits.
- You shall take seven or more courses each semester.
- We offer no course specially designed for the students of this program.

(1) Compulsory Courses

Japanese Affairs A (Japanese Language and Culture)

Spring Semester
(2credits/30hours)

Lectures on Japanese Language and Culture

Japanese Affairs B (Society and Culture)

Fall Semester (2credits/30hours)

Seminar on Japanese Society and Culture

(2) Elective Courses

Japanese A, Japanese B (Intermediate)

(2credits/30hours)

These courses are designed for those students with proficiency of level 2 of The Japanese Language Proficiency Test to develop the basic capability of writing and reading.

Japanese C, Japanese D (Intermediate)

(2credits/30hours)

These courses are designed to improve the proficiency of reading and writing and also to attain the reading and writing skills through understanding the basic structure of Japanese sentences. Aim to enrich intermediate vocabularies based on conversation and writing practice.

Japanese E, Japanese F (Advanced)

(2credits/30hours)

These courses are designed for those students with proficiency of level 1 of The Japanese Language Proficiency Test to acquire overall Japanese language skills through writing papers and reading newspaper and magazine articles.

Japanese G, Japanese H (Advanced)

(2credits/30hours)

These courses are designed for those students with proficiency of level 1 of The Japanese Language Proficiency Test to improve the grammatical and lexical skills through reading comprehension.

Students shall improve the proficiency of writing producing short essays, summaries, and reports.

Applied Japanese I, Applied Japanese II (Advanced)

(2credits/30hours)

Applied Japanese I

Practice on reading and writing is designed for various topics on Japanese business manners based upon the articles in latest newspapers or magazines.

Applied Japanese II

TV dramas of love story will be used as teaching materials so that students can deepen the understanding of Japanese society, way of thinking, and also improve the capability expressing dedicate sentiments in Japanese.

Japanese Culture (2credits/30hours)

This course is designed for students to understand the Japanese culture profoundly, through reexamining the traditional play games in Japanese lives (Karuta (Japanese playing cards), origami, Shogi (Japanese chess) etc.)

Multicultural Communication A,C

(fall semester)(2credits/30hours)

Multicultural Communication B

(spring semester) (2credits/30hours)

Multicultural discussion on Japanese culture and society with Japanese students is organized.

Interdisciplinary Courses and Specialized Courses

You may take any courses offered by Faculty of Education and Regional Studies.

④ Supervision

•A faculty member from Faculty of Education and Regional Studies will be assigned to each student as advisor, while the International Student Center supports students in the various aspects of their lives.

⑤ Tours, events, etc.

•Sightseeing tours are organized by International Student Center in February and September.
•Various programs/events are also organized by the local government or volunteer groups.

⑥ Completion of the Program and Conferment of the Certificate

•In order to complete the program you shall earn twenty or more credits, including the credits of two compulsory courses and eight selective courses. The Certificate of the JLCS Program shall be conferred to anyone upon his or her request who has completed the program.

⑦ Credits

•Two credits shall be given to any student who has finished a course.

⑧ Others

•Qualifications of applicants for the program
It is expected that applicants meet the following conditions:

(1) Proficiency of Japanese Language

•Applicants shall have proficiency in Japanese equivalent to or above level 2 of the Japanese Language Proficiency Test.

(2) Academic Background, Majors

•Applicants shall have interest in Japanese language, culture, education, and other related fields of study.
•Applicants shall have research/study background in the fields of interest.

◇Accommodations

Within five minutes' walk from the university are located two facilities that accommodate overseas students, The Overseas Student House (25rooms, 2 couple rooms, and 2 family rooms), and the International Exchange Student Dormitory (209 rooms, which are for both Japanese and international students). However, we cannot assure you the accommodation in the above facilities due to the limited number of rooms.

◇Contact

International Affairs Division
Address : 9-1, Bunkyo3-chome,
Fukui-shi,
Fukui 910-8507 Japan
TEL : +81-776-27-8406
Fax : +81-776-27-9715
E-mail :
gkryugaku-k@ad.u-fukui.ac.jp
URL : <http://www.u-fukui.ac.jp>

Shinshu University (Nagano)



Shinshu University provides individualized academic instruction for each participant and rich opportunities to participate in cultural events. Participants can acquire practical Japanese.

◇University Overview

1. Outline of Shinshu University

Shinshu University was established in 1949 as a national university. At present, we have 5 campuses in 4 cities (Matsumoto, Nagano, Ueda and Minami-Minowa) in Nagano Prefecture. The University is comprised of 8 faculties and 8 graduate schools as well as many educational and research institutes, including International Center, Institute of Mountain Science, Institute of Carbon Science and Technology, etc. Because Shinshu is known as one of the best mountain resorts in Japan, Shinshu University attracts many students for its favorable campus environment. Each campus shows unique development in beautiful nature and long-established educational environment and contributes regional development, and is always ranked in upper class in regional contribution level out of nationwide universities. The campuses are connected by a network system which facilitates effective communication and use of research information in the university as a whole.

2. Organization Facts (as of May 1, 2009)

•Undergraduate Schools:

Faculty of Arts, Faculty of Economics, Faculty of Science, Faculty of Education, School of Medicine, Faculty of Engineering, Faculty of Agriculture, Faculty of Textile Science and Technology, School of General Education, International Center, etc.

•Number of Teaching Staff and Students: 12,577(total)
Teaching Staff: 1,153

Students: Undergraduate 9,343 Graduate 2,081

3. International Exchanges

•Partnership Agreement Between Universities

48 Universities (17Countries) (as of May 1, 2009)

•Number of International Students
330 (25 Countries) (as of May 1, 2009)

•Number of program participants
Year 2006-2(Indonesia), Year 2007-1(Russia)
Year 2008-1(Russia), Year 2009-1(Belgium)

4. Nagano Prefecture (Our Location)

Nagano Prefecture is one of the most well-known tourist resorts in Japan. Matsumoto Campus where program participants study is located in the center of Japan and is easily accessible to major cities such as Tokyo (by train 2h30min.), Nagoya (by train 2 hours), and Kyoto (by train 2h40min.) . Nagano is blessed with four distinct seasons and beautiful natural scenery, including high mountains which are part of the famous Japanese Alps, carious plateaus and hot springs which are attracting many visitors. Furthermore, one can easily sense the culture and history of this area by observing many small old castles, shrines and temples. Nagano Prefecture is also a famous region for winter sports. In fact, Winter Olympic Games were held here in 1998. We believe students can enjoy climbing mountain, winter sports, field trips etc.



International Students with Matsumoto Castle

◇Outline of the Program

1. Program Quota: a few students

2. Duration of the Program:

From October 1, 2010 to September 30, 2011 (1 year)

3. Participant Requirements

※Participant must:

- (1) Be able to understand lectures in Japanese.
- (2) Actively participate in classes and have ability to report their own specialized field in Japanese.
- (3) Be willing to communicate with Japanese people and be able to introduce their own countries and culture.
- (4) Be encouraged to have Japanese Language Proficiency Test or its equivalent.

4. Outline of Classes

Participants will attend both the classes for all international students and the ones only for this program participants. They can find the classes that fits their needs from intermediate- to advanced-level of Japanese classes, and also from regular classes for Japanese students if they want.

(1) Middle Japanese

A course designed for intermediate level students to achieve higher reading and listening skills. This course covers all 4 skills (reading, hearing, speaking, writing) and offers intensive instruction in small class size. Therefore, those who take this course must attend every classes (about 10 classes par week).

(2) Understanding Japan and the Japanese Language

A course for upper-intermediate or advanced level Japanese learners. Student learn Japanese and Japanese society, culture, etc.

○Example of classes

Japanese society and people:

Visit Japanese company, factory, etc.

Japanese Martial Arts and Traditional Culture:

Tea ceremony, harp, kendo, Karate, etc.

Japan in Asia: Japan's Influence on politics and economy

Academic Japanese 1: Presentation methods

(3) Japan Language and Japan Studies

A course for advanced Japanese-level students.

○Example of classes

Japanese Writing, Japanese Language (Presentation), Japanese Language (Listening & Vocabulary), Japanese Reading, Scientific and Technical Japanese, Japanese Condition (Culture and Japanese Language), Japanese Condition (Japanese Industry)

(4) Presentation and Thesis writing

Participants must make a presentation about their specialized field in front of Japanese audience at the end of the course. Detailed instructions are given from a planning stage, which leads to high-level performance.

Academic Japanese 3, mentioned in (2), is a class especially for this program participants to prepare for writing a thesis on their specialized theme in Japanese.

○For more details, check the syllabi on the website.

http://www.shinshu-u.ac.jp/institution/suic/upload/pdf/edu/09course_all.pdf



Zenkou-ji

5. Support

(1) Academic Advisors

Each student will have an academic advisor (one of the members at the International Center) who is to give advices on the student's academic and daily life matters.

(2) Other Support

Other university staffs also support the students depending on their needs.

(3) Tutor

International Center will arrange tutors who will help participants with the complicated public procedures and their Japanese learning. Some tutors enjoy visiting places around Nagano prefecture with the participants.

6. Transcript, Credit transfer

At the end of the program, the International Center issues official transcript of credits earned with grades. Participants' home university is to decide on credit transfer according to their criteria.



International students with Kimono

◇Housing

1. Types of housing

Shinshu University has International House and University Apartment for participants.

2. Location

Each housing is about 10 minutes' walk from Matsumoto Campus.

3. Furnishing

All the rooms are furnished with basic electric appliances and cooking stoves so that participants can start a new life in Japan with minimum carry-in luggage.



University Apartment

◇Contact

Shinshu University, Division of International Exchange
Address: 3-1-1 Asahi, Matsumoto, Nagano, Japan, 390-8621

TEL +81-263-37-3360

FAX +81-263-37-2181

E-mail rie_saitou@su-oasis.im.shinshu-u.ac.jp

○You can contact the following contact person about the contents of the course.

SATO Tomonori (International Center)

E-mail stomo@shinshu-u.ac.jp

〈URL〉<http://www.shinshu-u.ac.jp/> (Shinshu University)
<http://www.shinshu-u.ac.jp/institution/suic/>
(Shinshu University International Center)



Kiso-ji

Gifu University (Gifu)



Polish up Your Japanese Language in Autumn, Indulge Yourselves in Japanese Culture in Spring

◇ Overview of Gifu University

1. Gifu University

- Gifu University is a national university that maintains 5 faculties (Medicine, Engineering, Applied Biological Sciences, Education, and Regional Studies) and 8 graduate schools. There are a number of research and education centers (Life Science Research Center, River Basin Research Center, Center for Cooperative Research, International Student Center, Information and Multimedia Center, Library, etc.). The University offers a high quality education and research in many areas, and has been selected as one of the “Good Practice” for its teaching and research.
- Gifu City is conveniently situated only 2 hours to Tokyo and 1 hour to Kyoto by bullet train, and 20 minutes to Nagoya. The main campus is in Yanagido, a suburb of Gifu City, 30 minutes from Gifu Station. Away from city bustles and noise and surrounded by rice fields and mountain forests, the campus is an ideal place to study in tranquility.

2. Faculties and Student/Staff Numbers (as of October 2009)

Faculties : Education, Regional Studies, (undergraduate) Medicine, Engineering, Applied Biological Sciences

Graduate Schools: Education, Regional Studies, Medicine, Engineering, Applied Biological Sciences, United Graduate School of Agricultural Science, United Graduate School of Veterinary Science, United Graduate School of Drug Discovery and Medical Information Sciences

Academic Staff : 817

Students : 5,835 undergraduates, 1,565 post-graduates, 197 non-degree seeking students; Total: 7,597

3. International Students (as of October 2009)

Gifu University promotes international exchange, and has agreements with 37 universities in 15 countries for academic and student exchange).
Number of International Students : 346 (65% are postgraduates from 27 countries and 1 region)

Number of International Researchers: 10
Total Number of Japanese Language and Culture Studies Program: 52 (2001–09)



University library

4. Special Features of Gifu Prefecture

- Gifu Prefecture is situated in the center of Japan, surrounded by high mountains in the north, and with many rivers and water falls in the south. It is blessed with scenic beauty and traditional culture combined with a modern lifestyle. Gifu is also known as a city where *ODA NOBUNAGA* built his castle.



- There are many famous places for tourism in the prefecture such as Takayama, Gujo. The Nagara River runs through Gifu City where the century-old practice of cormorant fishing is observable as another cultural attraction.
- Studying at Gifu University offers a variety of advantages to international students of Japanese language and culture: exposure to the traditional culture of Japan in a medium-sized city of 400,000 people, opportunities to mix with friendly local communities, a low cost of living, and a spacious and natural environment.

◇ Contents of the Course

1. Name of the Course

Gifu University Japanese Language and Culture Studies Course

2. Characteristics of the Course

① Objectives

- This is a one-year course designed for undergraduate students of Japanese language and culture.
- The objective of this course is to develop their Japanese language proficiency, and to provide basic knowledge about Japanese culture.

② Structure

- Classes in this course are designed only for Japanese Language and Culture Studies students and to provide the most effective training/learning experience during their one-year stay at Gifu University.
- The program also includes a cross-cultural communication class that provides Program students opportunities to mix with Japanese students. Classes for Japanese students can be taken.

③ Characteristics

- The students are placed in the most appropriate level of Japanese class according to their language ability. Therefore a progressive and effective development of their Japanese proficiency can be expected.
- A variety of culture classes are offered to suit the students' research interests.
- The program includes field trips to see performing arts (Noh, Kyogen, Kabuki), sports (Sumo) and to museums in order to appreciate traditional culture of Japan.
- Several field trips within Gifu Prefecture (Gujo, Toki, etc.) and to nearby prefectures are included in the program to deepen students' understanding and appreciation of Japanese culture.
- The University also offers a ski trip in winter and a field trip for overseas students during the summer break.

3. Number of students accepted: 10

4. Period of the course:

October 1, 2010~ September 30, 2011

5. Outline of the subjects:

- *The following are compulsory subjects per week (one class is for 90 minutes).
- *Each semester (Autumn, Spring) consists of 15 weeks.
- *Required credits: 40



Dressing Yukata by yourself

【Subjects and class number (credits)】

Subject	Autumn	Spring	Subtotal
Japanese (Regular)	5 (5credits)	-	5 (5credits)
General Subjects for Japanese Students	-	2 (4credits)	2 (4credits)
Japanese (Reading)	1 (2credits)	1 (2credits)	2 (4credits)
Japanese (Writing)	1 (2credits)	1 (2credits)	2 (4credits)
Japanese (Oral)	1 (2credits)	1 (2credits)	2 (4credits)
Japanese (Listening)	1 (2credits)	1 (2credits)	2 (4credits)
Contemporary Japanese Society	1 (2credits)	-	1 (2credits)
Modernization and the Japanese	1 (2credits)	-	1 (2credits)
Cross-Cultural Communication	1 (2credits)	-	1 (2credits)
Japanese Traditional Culture	-	1 (2credits)	1 (2credits)
Culture of Gifu	-	1 (2credits)	1 (2credits)
Thesis Supervision		1 (1credits)	1 (1credits)
Thesis		4credits	4credits
Total	12 (19credits)	9 (21credits)	21 (40credits)

Japanese Language Subjects

- Regular Japanese classes: develop the student's overall proficiency in intermediate and advanced levels of Japanese including grammar, vocabulary, communication, and writing skills.
- Independent classes: focus on reading comprehension skills, academic and thesis writing skills, oral presentation skills and listening skills for discussion and seminar presentation.

Japanese Culture Subjects

- Culture Subjects: Contemporary Japanese Society, Modernization and the Japanese, Japanese Traditional Culture, and Culture of Gifu aim for the students to learn about various aspects of Japanese culture. The students are encouraged to compare Japanese culture with their own cultures in order to appreciate the differences and similarities between different cultures.
- Cross-cultural Communication: Recognition of cultural differences and similarities can be further enhanced by discussion with Japanese students in the Cross-cultural Communication class.
- Thesis Supervision: The awareness of the importance of cultural understanding will lead to the selection of a thesis topic.

【Examples of the thesis topics】

- Homeless in Japan
- YOSHIMOTO BANANA in the world
- The National Sports — Sumo and Tai Ji —
- IJIME (Bullying) in schools
- Labor issues of Chinese trainees & skill training employees
- Kanji in Japanese language and their necessity
- The Youth and Faith

Elective Subjects

Apart from the above-mentioned subjects, the University offers subjects for degree-seeking overseas students, and general subjects for Japanese students can be taken in place of this program's subjects, depending on the student's Japanese proficiency and subject to the approval of the student's supervisor.

6. Supervision

- The following academic staff of the International Student Center (ISC) offer individual supervision on academic matters and the students' welfare at Gifu University.
- If necessary, depending on the students' research topic, other academic staff members of the Center and Faculties will support the supervision.

Chief Supervisors

Name	Center	Position	Expertise
MORITA Koichi	ISC	Professor	History of Japanese Culture
OHTA Takako	ISC	Professor	History of Japanese Education
TSUCHIYA Momoko	ISC	Associate Professor	Japanese Literature

Supporting Staff

Other academic staff of the International Student Center, and the Faculties of Regional Studies and Education are included as supporting staff.

7. Events and Schedule

- Oct. Guidance for autumn semester, Opening ceremony, Class start
- Nov. University Campus festival
- Jan. Ski tour (3nights 4days)
- Apr. Guidance for spring semester, Research seminar starts
- Jun.~Jul. Pottery, Sumo, Noh and Kyogen classes
- Jul. Kabuki watching
- Aug. Thesis submission
- Sep. Thesis presentation, Conferment ceremony



Pottery Experience in Gifu

Theses Presentation at Gifu City Library



8. Requirements for Completion of the Course/Certificate of Completion

- A certificate of completion is issued upon the satisfactory completion of the program (all compulsory and some elective courses).

9. Credit Points

- Credit points for transfer can be arranged by negotiation with the students' home universities.

10. Qualifications and Conditions for Application

- Applicants must be regular students (second year or above) in an undergraduate program at their home university.
- Applicants must be majoring or double-majoring in Japanese language and Japanese studies at their university.
- Applicants must have passed the second-level Japanese Language Proficiency Test or demonstrate equivalent proficiency in Japanese.



Students who finished this course in September 2009

◇ Accommodation

- Gifu University International House is established to provide accommodation for international students.
- Gifu University International House is available to the students of this course.

International House

4 floors (Building A), 5 floors (Building B)
Number of Rooms: 69 single rooms, 14 rooms for married couples, 7 rooms for couples with children.



International House

◇ Contact Address

Student Exchange Support Office, Gifu University
Address: 1-1 Yanagido, Gifu city, 501-1193 JAPAN
Phone: +81-58-293-2146 (Direct)
Fax: +81-58-293-2143
E-mail: direcent@gifu-u.ac.jp

Course coordinators

Prof. MORITA, Koichi: moritak@gifu-u.ac.jp
Asso. Prof. TSUCHIYA, Momoko:
momokot@gifu-u.ac.jp

Gifu Univ. ISC URL:

<http://www1.gifu-u.ac.jp/~isc/jp/index.html>
Gifu Univ. URL: <http://www.gifu-u.ac.jp/>

Shizuoka University (Shizuoka)



Japanese Studies Program consisting of Japanese Language Studies, Japanese Culture Studies, Individual Research and Extracurricular Activities.

◇Introduction to Shizuoka University

(1) Overview of Shizuoka University

The National University Foundation Law led to the establishment of Shizuoka University on May 31, 1949. Shizuoka University incorporated Shizuoka High School, Shizuoka Teacher–Training Institutes I and II, a Young Teacher–Training Institute, and Hamamatsu College of Technology, which had been established during the pre–1945 educational system. Since then, Shizuoka Prefectural Agricultural College has been integrated, the number of faculties and departments has increased, and there have been many other reforms such as unification of campuses in the Shizuoka Area.

Shizuoka University consists of six faculties: Humanities and Social Sciences, Education, Science, Engineering, Agriculture, and Information

• Number of students, etc. (As of May 1, 2009)
Teaching Staff: 845

Undergraduate Students: 8,818

Graduate Students: 1,591

(2) International Exchange (As of May 1, 2009)

International Students: 281 (27 Countries)

Japanese Studies Program Students: 1

(3) Shizuoka Prefecture

Shizuoka Prefecture is situated in the center of Honshu, the main island of the Japanese archipelago, between Tokyo and Osaka. It prospered as a strategic political and trading point along the Tokaido Route.

It is graced with a coastline that extends from the Izu Peninsula to Suruga Bay and the Sea of Enshu along the Pacific Ocean in the south, and is bordered in the north by the Southern Alps, with peaks that often rise more than 3,000 meters above sea level. The climate is mild throughout the year, and you can see many hillsides covered with groves of mandarin oranges and green tea plantations, which are Shizuoka's principal agricultural products. The prefecture is home to Hakone Fuji Izu National Park and Southern Alps National Park. There are many hot springs, especially on the Izu Peninsula, which attract tourists.

◇Outline of the Course

1. Name of the Course (Not provided especially)

Faculty of Humanities and Social Sciences:

Department of Sociology

Department of Language and Literature

2. Characteristics of the Course

We offer not only small group research projects to each major but also interdisciplinary studies.

We provide two semesters (from October to March and from April to September). Each semester has programs consisted of language education (Japanese language education) course, general education (Japanese culture), individual study and field work.

Some subjects of Faculties may be incorporated into the general education course and free research program if necessary. Especially, in this program we provide a one–to–one student/adviser system

3. Outline of the Course

① Classes and Number of Students to be accepted

Faculty	Area of Study		Number of Students
Department	Japanese Language	Japanese Culture	
Humanities and Social Sciences	Intermediate ~ Advanced	Sociology, Philosophical Anthropology, Cultural Anthropology, History and Culture	3
Social and Human Studies			
Humanities and Social Sciences	Intermediate ~ Advanced	Japanese and Asian Languages and Literature, Comparative Languages and Literature, Euro–American Languages and Literature	3
Language and Literature			

② Period of the Course

From October 1st 2010 to September 30th 2011

③ Classes

◆ Japanese – provided by International Center (Elective subjects)

Japanese2 (Elementary): Master the basic elements of grammar and letters, have the ability to engage in simple conversation and read and write short, simple sentences

Japanese3 (Lower–intermediate): Master grammar, Kanji and vocabulary to a relatively high level, be able to communicate in a campus life and have the ability to converse, read, and write about matters of a general nature

Japanese4 (Upper-intermediate): Master grammar, Kanji and vocabulary to a high level, have an integrated of the language sufficient for university classes, be able to write and read related matter to one's specialty

Japanese5 (Advanced): Have an integrated command of the language especially for studying in the University

◆Japanese/General Education (Elective Subjects)

Japanese I ~ VI: Develop an integrated command of the language especially for an academic life in the University

Japanese Culuture: study Japanese culture and language

【Number of Class Hours】 (2hours × 15times = 30 Contact hours)

Subjects		Number of hours			
		first semester	Second Semester	total	
Japanese Language Program	Japanese2	Basic Japanese	90	90	180
	Japanese 3	Reading & Grammar	30	30	60
		Listening & Vocabulary	30	30	60
		Writing & Speaking	30	30	60
	Japanese 4	Reading & Grammar	30	30	60
		Listening & Vocabulary	30	30	60
		Writing & Speaking	30	30	60
	Japanese5	Integrated Japanese	30	30	60
		Integrated Japanese	30	30	60

*Classes are not compulsory.

*Placement tests will be given in order to judge the level of the students.

◆Special Subject – Faculty of Humanities and Social Sciences (For Domestic Students)

①Sociology ②Philosophical Anthropology

③Cultural Anthropology ④History and Culture

⑤Japanese and Asian Languages and literature

⑥Comparative Languages and Literature

⑦European and American Language and Literature

*Special Subjects will be discussed with the academic advisor.

④Guidance System

Responsible academic staff: A teacher who has the same major field with an applicant will guide him/her for his/her study and Japanese life. (One academic advisor with one student)

Supporting academic staff: International Center: 4Teachers, Foreign Student Advisors:2 counselors, Faculty of Humanities and Social Sciences :1teacher. Responsible staff: Fujii Nobuharu, Manager of International Affairs Section

⑤Field Work and Activities

Individually guided with each student.

⑥Requirements for Completion: Certificate of

Completion will be conferred for a students who has completed the course. On one's request, a certificate of Japanese class will be issued for a student who has attended more than 80% of each classes, and have passed the final examination.

⑦Qualifications and Conditions of Applicants

- (1) To have a nationality of the country which has a diplomatic relationship with Japan.
- (2) Applicants must be born between April 2, 1980 and April 1, 1992.
- (3) Undergraduate student outside Japan with major of Japanese language and culture.
- (4) Japanese ability : to understand Lectures in Japanese (Higher than the level 2 of Japanese Language Proficiency Test.).
- (5) Be able to come to Japan between the 1st and 7th of October, 2010.
 - ※(1) Soldiers on active service and military employees are unacceptable.
 - ※(2) If an applicant can not arrive at Japan by the above date, his/her acceptance may be cancelled.
 - ※(3) A student who receives the other scholarship is not acceptable.
 - ※(4) A student who was awarded a Japanese Government Scholarship in the past will not be accepted unless the applicant's last scholarship was granted more than three years ago at the time of October 1, 2010

⑧Credits

All the classes including Japanese language classes are credited.

◇Housing

The International Residence provides housing for overseas students and researchers, as well as to promote international communication. The maximum period of residence is one year.

Due to capacity restrictions, not all applicants can be accepted.

• Shizuoka International Residence (7-30, Ando 1-chome, Aoi-ku, Shizuoka-shi)

Applications for residence are accepted in July (for October occupancy) and February (for April occupancy).

Type	Rooms	Area (m ²)	Rent/month
Single	30	15.40	¥ 5,900
Couple	3	37.26	¥ 11,900
Family	2	55.89	¥ 14,200

◇ Contact

International Center

Address: 836 Ohya, Suruga-ku, Shizuoka-shi,
422-8529 JAPAN

TEL: 054-238-4260

FAX: 054-238-5041

Home Page Address: <http://www.shizuoka.ac.jp>

<http://www.icsu.shizuoka.ac.jp/>

Course Coordinator / Konno Kiwahito

Vice-Dean : jjkkonn@ipc.shizuoka.ac.jp

Japanese Course Coordinator / Harasawa Itsuo

Professor: kiharas@ipc.shizuoka.ac.jp

Nagoya University (Aichi)



Each student writes a research paper in Japanese under the careful supervision of the course's academic advisors, after learning the basic way to write a paper systematically

◇ University's overview

Nagoya University is one of the leading national universities for higher education and research in Japan. It is located in Nagoya city with a population of more than two million, the political, industrial and cultural center of central Japan as well as the Capital of Aichi Prefecture. Its history dates back to 1871 when a medical school and a hospital were founded. After many vicissitudes, the New System Nagoya University started in 1949. Today, the University comprises 9 schools, 13 Graduate schools, the University Library, 3 Research Institutes, 16 other Centers for specialized study and research. The University consists of 16,395 students, 1,344 foreign students and 1,713 academic staff members as of May 1, 2009. It has International Residence, Foreign Students House and International Ohmeikan.

◇ Outline of the Course

1. Number of Students to be Accepted: 20 students
2. Period of the Course:
From October 1, 2010 to September 30, 2011
3. Contents of the Course in Brief
 - (1) Intermediate and Advanced Japanese Language
The program for developing the ability of Japanese language, based on our systematic program, especially focusing on improving some skills for oral presentation and developing reading skills through authentic material.
 - (2) Introductory Lectures
 - ① Linguistics I (autumn semester) / Linguistics II (spring semester)
 - ② Japanese Linguistics I (autumn semester) / Japanese Linguistics II (spring semester)
 - ③ Japanese Culture I (autumn semester) / Japanese Culture II (spring semester)
 - ④ International Relations I (autumn semester) / International Relations II (spring semester)
 - (3) Project Work

The program for learning Japanese language and Japanese culture and current issues, using newspaper articles and audio-visual materials.

(4) Research Paper

Each student writes a research paper in Japanese under the careful supervision of the course's academic advisors, after learning the basic way to write a paper systematically. The students' papers are collected and published each year.

4. Academic Guidance

(1) Academic Advice

Two course coordinators advise students on academic issues as the need arises.

(2) General Advice

A overseas student advisor advises students as the need arises.

5. Conditions for Completion of the Course

A certificate of completion of the program is given to students who complete all the compulsory subjects.

6. Qualifications and Conditions of Applicants.

(1) Those who have the intermediate or advanced level of ability of Japanese language.

(2) Those majoring in Japanese language, Japanese linguistics, or Japanology.

7. Credits and Credit Transfer

An academic transcript will be issued for students who wish to transfer credits.

Decisions regarding the transfer of credits will be made according to the criteria of the student's home university.

◇Housing

(1) Foreign Students House

(35 minutes by subway)

Address: 2-23 Tosei-cho, Showa-ku,

Nagoya 466-0026

Tel: +81-(0)52-853-2901

49 rooms for single persons (12.5m²)

5 rooms for couples (35m²)

2 rooms for families (50m²)

Each room is furnished with a bed, wardrobe, desk, chair, bookshelf, air-conditioner, refrigerator, shoe box.

Facilities: reading rooms, lounge, kitchens, laundry room, Japanese-style room, office.

(2) International Residence (on campus)

Address: 1 Furo-cho, Chikusa-ku, Nagoya 464-0814

Tel: +81-(0)52-789-2197

Concrete-reinforced 6, 7 and 8-story building and 2-story administration building:

95 rooms for single persons (17m²)

20 rooms for couples (34m²)

20 rooms for researchers (34m²)

2 houses for researcher's families (51m²)

Each room is furnished with a kitchenette, unit bath, bed, wardrobe, closet, desk, chair, air-conditioner, refrigerator and shoe box.

Facilities: lounge, library, meeting room, Japanese-style room, laundry room, multi-purpose room, office.

3) International Ohmeikan (10min.on foot)

Address: 165-1 Takamine-cho Showa-ku, Nagoya

466-0811

Tel: +81-(0)52-832-2736

Concrete-reinforced 9-story residence:

60 rooms for foreign students (12m²)

Each room is furnished with desk, chair, air-conditioner, bed, wardrobe and shoe box, cabinet, multi-purpose table, bath and toilet, curtains and window screens.

Facilities: multi-purpose room, laundry room, kitchen, living room etc.

◇Contact

Education Center for International Students,
Nagoya University

Address:

Furo-cho, Chikusaku, Nagoya 464-8601 JAPAN

Tel.: +81-(0)52-789-2198 Fax: +81-(0)52-789-5100

Home Page: <http://www.nagoya-u.ac.jp/en/>

Academic advisor E-Mail Address:

Momiyama Yosuke

j46083a@nucc.cc.nagoya-u.ac.jp

Ukiba Masachika

j46084a@nucc.cc.nagoya-u.ac.jp

Mie University (Mie)



Aims and Features of the Course

- * This course is for international students who intend to do research work on Japan or on Japanese language in the future.
- * Intensive study of upper intermediate and advanced levels of Japanese in appropriate classes.
- * Acquire basic research method in their major fields of study in tutorials by the academic advisors.
- * Gain cross-cultural understanding through various experiences with Japanese and international students/residents in the local community

◇ University Overview

◆ Mie University consists of five undergraduate faculties (Humanities, Education, Medicine, Engineering and Bioresources) and six graduate schools including Graduate School of Regional Innovation studies. The campus is located in Tsu city, blessed with an excellent natural environment facing the beach on the east and the Suzuka Mountains on the north-west.

◆ Number of Students and Staff

Number of undergraduates: 6,200
Number of graduate students: 1,223
Number of teaching staff: 734
Number of international students: 234
(22 countries and areas)

(as of May 1, 2009)

◆ Mie University has partner-university or partner-faculty academic exchange agreements with 51 foreign universities for advancement of the exchange of students, researchers, and academic information.

◆ Number of Students in JLCS (including students from overseas institutions with exchange agreements)

Year 2003: 3
Year 2004: 1
Year 2005: 3
Year 2006: 5
Year 2007: 5
Year 2008: 4
Year 2009: 5



◇ Around University

◆ Tsu city is the prefectural capital of Mie prefecture with a population of 290,000. It is comfortable to live in with a mild climate throughout the year. It is convenient as well, takes one and a half hours to Osaka, two hours to Kyoto and three hours to Tokyo.

◆ Mie prefecture is known for its rich history and culture. Even a poem from *Manyoshu*, an anthology of poetry, compiled as early as in the 8th century referred to Mie. *Shiosai*, a novel written by Yukio Mishima, is set in Kamijima Island of Mie. Matsuo Basho, a great haiku poet, was born in this district and Riichi Yokomitsu, known as “God of Literature”, spent his junior high school days here.

◆ It is also known for its rich historical spots and resort areas. Historical architectures such as Ise Shrine, old towns and streets have been well preserved. *Kumano-kodo* (the ancient road) was registered as a World Heritage Site in July 2004.

◆ Suzuka Circuit is referred to as the “Holy place of Japanese motorsports” and the site of the Japanese Formula 1 Grand Prix. This event attracts fans from all over the world.

◇ **Course Overview**

◆ *Name of the Course*

Japanese Language and Culture Studies Course at the Center for International Education and Research (CIER), Mie University

◆ *Contents of the Course*

Number of students to be accepted: 5

Duration: From October 1, 2010 to September 30, 2011

The first half of the course (October - March)

<Study Japanese language and culture>

- Students study Japanese language in appropriate classes.

- Students participate in field trips to the local historical/cultural spots and other / places of interest.

The latter half of the course (April - September)

<Studies in major fields>

- Students study an upper level of Japanese language and culture.

- Students take tutorials from academic advisors and write a research report in Japanese.

Enrollment in CIER classes

First of all, new students in this program should take a placement test.

*If necessary upper intermediate classes are available for those in the advanced level, and intermediate classes are available for those in the upper intermediate level.

Standards of each course

<Upper Intermediate Course>

Goals: Acquire a high level of reading/ listening comprehension and writing ability necessary for university education.

Vocabulary: Approx. 6000 - 8000 words

Kanji: Approx. 1000 - 1500 letters

<Advanced Course>

Goals: Acquire a high level of Japanese language ability necessary for studies in major fields.

Vocabulary: Approx. 8000 - 10000 words

Kanji: Approx. 1500 - 2000 letters

Compulsory Classes in Upper Intermediate Course

Grammar 1

Hours/week: 90 minutes

Goals: Study intermediate and advanced levels of expression patterns systematically and acquire the ability to use them properly.

Grammar 2

Hours/week: 90 minutes

Goals: Acquire the ability to understand and properly use various expressions on a variety of themes.

Reading

Hours/week: 90 minutes

Goals: Acquire the ability to read advanced academic writing as preparation for study in the major fields.

Listening comprehension 2

Hours/week: 90 minutes

Goals: Improve listening comprehension with a variety of textbooks and acquire speaking ability.

Japanese Culture & Society 1

Hours/week: 90 minutes

Goals: Acquire speaking and writing abilities through discussion and writing a paper on culture and society of Japan and students' own countries.

Japanese & Culture Seminar

Hours/week: 90 minutes

Goals: Take tutorials from academic advisors to study in their major fields and to write a research report in Japanese.

The Society and Culture of Mie

Hours/week: 90 minutes

Goals: Learn and enjoy the social/ cultural environment of Japan and Mie prefecture through field studies.

Compulsory Classes in Advanced Course

Reading & Writing

Hours/week: 90 minutes

Goals: Read journal articles to study the basis of academic writings.

Study how to write a research paper.

Listening comprehension 3

Hours/week: 90 minutes

Goals: Acquire the ability to comprehend practical Japanese through TV programs and to use those expressions properly.

Japanese Culture & society 2

Hours/week: 90 minutes

Goals: Read materials about various topics related Japanese society and culture, then discuss with Japanese students.

Japanese & Culture Seminar

Hours/week: 90 minutes

Goals: Take tutorials from academic advisors for studying in their major fields and for writing a research report in Japanese.

The Society and Culture of Mie

Hours/week: 90 minutes

Goals: Learn and enjoy the social/cultural environment of Japan and Mie prefecture through field studies.

Electives for Upper Intermediate and Advanced Courses

Reading/Kanji 2

Hours/week: 90 minutes

Goals: Comprehensive improvement of reading and writing through learning Kanji.

*In addition to these CIER courses, you may also enroll in classes offered at five faculties (Humanities, Education, Medicine, Engineering and Bioresources).

◆ Qualifications and conditions for application

- (1) Undergraduate students (in the second year or above) at a home institution who major in Japanese language, education and culture.
- (2) Students who passed the Japanese Language Proficiency Test Level 2 or have the ability equivalent to it. (Those who have mastered 4000 to 6000 words, 600 to 800 Kanji or more.)

◆ Teaching staff

Teaching staff: Four full-time CIER faculty members

Supporting teaching staff: Five CIER part-time instructors

Supporting faculties: Five undergraduate faculties (Humanities, Education, Medicine, Engineering and Bioresources).

Full-time CIER faculty members and their research fields

Ms. Makiko Hanami (Professor):

Cultural anthropology, cross-cultural education

Ms. Michiko Yoshii (Professor):

International cooperation, civil society

Ms. Masako Fukuoka (Professor):

TJFL, second language acquisition

(To be recruited in April 2010) (Associate Prof.)

TJFL

*TJFL= Teaching Japanese as a Foreign Language

For further information:

<http://www.cie.mie-u.ac.jp/en/profile/staff>

◆ Study Support Programs

Office Hours of Teaching Staff

The five CIER faculty members have 2.5-office hours a week. Anyone who has questions on Japanese classes or has problems is encouraged to visit. You can also call for an appointment to meet some other times.

Japanese Language Study Support Program

CIER introduces Japanese student volunteers to international students who are taking Japanese language courses at CIER. Volunteers help international students practice what they have learned in classes. An International student pairs with a Japanese student.

Computers

Latest model computers with CALL system are available in the computer room of CIER for all students. Besides using in classes, all students can use computers for the internet and to write papers with provided user account.

Study Room for CIER Students

This room is for CIER students including JLCS. With 6 computers in the room, they can spend their time freely for their study or research.

Second Home (host family) Program

International students may apply to have a host family to visit and have fun with on weekends and holidays.

Multi-cultural Association For Fun (MAFF)

International and Japanese students share time on/ off campus partying, sporting, shopping, eating out, studying and more.

◆ Certificate of Completion and Credit Transfer

*Certificates of completion will be issued for those who have successfully completed the course requirements.

*Academic transcripts will be issued for those who can transfer credits to their home universities.

◇ **Accommodation**

University Foreign Student's House (gender-mixed, 30 single rooms and 5 rooms for married couples), *Foreign Student's Dormitory* (gender-mixed, 52 single rooms and 8 rooms for 4 persons) and *Women's Dormitory for International Students* (25 single rooms out of 75 rooms allocated for international students) offer adequate housing for students in this program.

◇ **For Further Inquiry**

International Relations Office, Mie University
Address: 1577 Kurima-machiya-cho, Tsu, Mie,
514-8507 JAPAN

Phone: +81-59-231-9721

Fax: +81-59-231-5692

E-mail: koryu@ab.mie-u.ac.jp

<http://www.mie-u.ac.jp>



▲ Campus Map of Mie University

Nanzan University (Aichi)



“Over thirty years of experience in educating international leaders” –Since the founding in 1974, the Center for Japanese Studies has been a leader in Japanese language studies, with the goal of helping each student develop a better understanding of the Japanese people and language.

◇University Overview

○ Features and History

Nanzan University is located in the heart of Japan in and around the city of Nagoya. It started as a college of foreign languages in 1946 and grew into a single Faculty of Arts and Letters in 1949. It is only the missionary school as a coeducation university in the area. “For Human Dignity” is the spirit on which a school was built.

○ Graduate and Undergraduate Schools

Undergraduate Schools: Humanities, Foreign Studies, Economics, Business Administration, Law, Policy Studies, Information Sciences and Engineering

Graduate Schools: Humanities, International Area Studies, Economics, Business Administration, Law School, Policy Studies, Mathematical Sciences and Information Engineering

○ Number of Faculty Staff members

Full-time : 317, Part-time : 479

○ Number of Students (as of May 2009)

Undergraduate: 9,526, Graduate: 499
Total: 10,025

International Students: Undergraduate: 115,
Graduate: 44
Total: 159

◇Course Features

○ Name of the Course

Center for Japanese Studies

○ Features of the Program:

CJS has been a leader in Japanese language studies since its founding in 1974. Intensive courses from elementary to advanced Japanese with six different levels are offered by outstanding and experienced Japanese teaching professionals. All four language skills are stressed: speaking, listening, reading, and writing. Studying in the appropriate course enables students to improve Japanese rapidly. Students not only learn Japanese language, but also expand their knowledge about Japan by taking area studies and culture classes, such as Japanese Economy, Flower Arrangement, etc. CJS also provides a homestay program through which students can learn the Japanese culture first-hand sharing daily life with a Japanese family.

○ Supporting Academic Staff:

Full-time Faculty 17, Part-time Lecturers 26

○ CJS students: 146 from 20 countries and areas (as of September 2009)

○ Number of Students Accepted:

120 students (including 10 Japanese Government Scholarship students)

○ Period of the Program:

September 2, 2010 – May 21, 2011

Fall Semester: September 2, 2010 – December 17, 2010

Spring Semester: January 12, 2011 – May 21, 2011

○ Contents of the Program in Brief:

(1) Japanese Courses:

Intensive Japanese 200: Basic Japanese grammar is introduced.

Intensive Japanese 300: Classroom reading materials are chosen to enable students to read everyday materials and effectively express themselves.

Intensive Japanese 400: Skimming and scanning training, as well as intensive reading are introduced. Students are expected to make an oral presentation of a chosen topic.

Intensive Japanese 500: Main texts are the materials chosen from various sources such as newspaper and novels. Students are required to write a research paper in Japanese and give an oral presentation.

Intensive Japanese 600: This course is designed mainly for those who wish to continue their language study in order to pursue an academic or professional career using the Japanese language.

Intensive Japanese 700: This course is designed for students who plan to deal with materials on specific topics in their future work.

○ Lecture Classes:

Japanese Business, Japanese Economy, Japanese Religions, Japanese Politics, Japanese Culture and Art, Literature, Japanese History, Japanese Culture, Japanese Foreign Policy

○ Open Courses:

Japanese Linguistics, Second Language Acquisition, Studies in Japanese Language Pedagogy, Japanese Society, Asia in American Foreign Relations since 1945, Observation and Analysis of Japanese Language Activities

** Open courses are offered by Undergraduate schools of Nanzan University and are open to cross registration by CJS students.

○ Seminars: Classical Japanese, Business Japanese, Japanese in Tourism: Hotel Japanese, Elementary and Intermediate Translation, Japanese Readings in Japanese Literature, Japanese Writing, Creative Writing, University Preparatory Japanese, Introduction to Teaching Japanese as a Foreign Language.

○ Practical Courses in the Japanese Arts: Ikebana (Flower Arrangement), Shodo (Calligraphy), Hanga (Woodblock Painting), Sumie (Chinese Black Ink Painting), Sado (Japanese Culture and Tea Ceremony).

○ Credit and Evaluation

CJS requires all full-time students to carry a course load of 14 to 18 credit hours per semester. A certificate of completion will be awarded to all full-time students successfully completing 28 credits in a year.

◇ Accommodation

(1) Homestay

Nanzan's homestay program is one of the largest in Japan and has been extremely well received by numerous students at CJS. Through the experience of sharing daily life with a Japanese family, Japanese culture can be learned first hand. These live-in situations also give everyone a precious opportunity to communicate across cultures and to make life-long friendships.

(2) International Residences

Nanzan University runs two off campus facilities, the Nagoya Koryu Kaikan and the Yamazato Koryu Kaikan. Both were founded to promote international understanding and cooperation through a live-in experience. Nagoya Koryu Kaikan is especially unique; 3 international students and 1 Japanese student share a 4LDK apartment with each student having his/her own room. The Nagoya Koryu Kaikan is a 1 min. walk from campus, and the Yamazato Koryu Kaikan is a 5 min. walk from campus.

○ Accommodation for Japanese Government students (for the last three years)

2007 (2 students) : Nagoya Koryu Kaikan
2008 (2 students) : Nagoya Koryu Kaikan
2009 (not attended)

◇ For further information please contact:

Office:

Center for International Education

Address:

18 Yamazato-cho, Showa-ku, Nagoya,

466-8673 Japan

Telephone: +81-52-832-3123

Fax: +81-52-832-5490

E-mail: cjs@ic.nanzan-u.ac.jp

URL

<http://www.nanzan-u.ac.jp/English/index.htm>